

Product datasheet for **TA590592**

BCAS2 Rabbit Polyclonal Antibody

Product data:

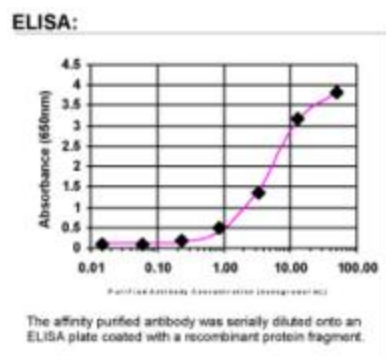
Product Type:	Primary Antibodies
Applications:	ELISA
Recommended Dilution:	WB 1:20000,ELISA 1:100-1:2000
Reactivity:	Human
Host:	Rabbit
Isotype:	IgG
Clonality:	Polyclonal
Immunogen:	DNA immunization. This antibody is specific for the C Terminus Region of the target protein.
Formulation:	20 mM Potassium Phosphate, 150 mM Sodium Chloride, pH 7.0
Concentration:	0.73mg/ml
Purification:	Purified from mouse ascites fluids or tissue culture supernatant by affinity chromatography (protein A/G)
Conjugation:	Unconjugated
Storage:	Store at -20°C as received.
Stability:	Stable for 12 months from date of receipt.
Gene Name:	BCAS2 pre-mRNA processing factor
Database Link:	NP_005863 Entrez Gene 10286 Human O75934
Background:	BCAS2 is a Ubiquitously expressed nuclear protein associated with the spliceosome. The deduced 225-amino acid protein contains a central potential N-glycosylation site and multiple N-terminal potential phosphorylation sites. Northern and Southern blot analyses demonstrates expression of a 1.5-kb transcript at various levels in multiple breast cancer cell lines, with greatest amplification in BT-20 and MCF-7 cells.
Synonyms:	DAM1; Snt309; SPF27
Note:	This antibody was generated by SDIX's Genomic Antibody Technology® (GAT). Learn about GAT



[View online »](#)

Protein Pathways: Spliceosome

Product images:



ELISA: BCAS2 Antibody