

Product datasheet for **TA590591**

MMP11 Rabbit Polyclonal Antibody

Product data:

Product Type:	Primary Antibodies
Applications:	ELISA
Recommended Dilution:	WB: 1:5000-1:20000; ELISA: 1:100-1:2000
Reactivity:	Human
Host:	Rabbit
Isotype:	IgG
Clonality:	Polyclonal
Immunogen:	DNA immunization. This antibody is specific for the C Terminus Region of the target protein.
Formulation:	20 mM Potassium Phosphate, 150 mM Sodium Chloride, pH 7.0
Concentration:	0.8mg/ml
Purification:	Purified from mouse ascites fluids or tissue culture supernatant by affinity chromatography (protein A/G)
Conjugation:	Unconjugated
Storage:	Store at -20°C as received.
Stability:	Stable for 12 months from date of receipt.
Gene Name:	matrix metalloproteinase 11
Database Link:	NP_005931 Entrez Gene 4320 Human P24347



[View online »](#)

Background:

The matrix metalloproteinases are a tightly regulated family of enzymes that degrade extracellular matrix and basement membrane components. Recent evidence suggests that these proteases and their specific inhibitors play important roles in normal developmental processes and in pathological conditions (1). MMP-11 (stromelysin-3), a new member of the matrix metalloproteinase family, is expressed in tissues undergoing the active remodeling associated with embryonic development, wound healing and tumor invasion. But like all other members of the matrix metalloproteinase gene family, stromelysin-3 is synthesized as an inactive precursor that must be processed to its mature form in order to express enzymic activity (2). MMP-11, like an inflammatory mediator, may exert a chemotactic influence on macrophages which aggregate in the mesangium; MMP-11 is not likely to have a parallel mitogenic or antifibrotic effect in diseased glomeruli (3).

Synonyms:

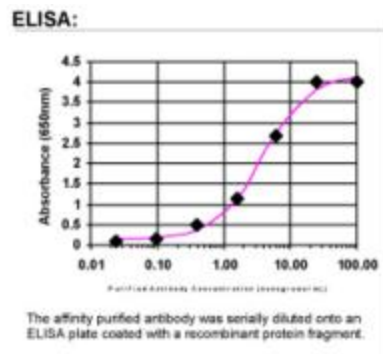
SL-3; ST3; STMY3

Note:

This antibody was generated by SDIX's Genomic Antibody Technology® (GAT). [Learn about GAT](#)

Protein Families:

Druggable Genome, Protease

Product images:

ELISA: MMP11 Antibody