

Product datasheet for **TA590581**

PBX3 Rabbit Polyclonal Antibody

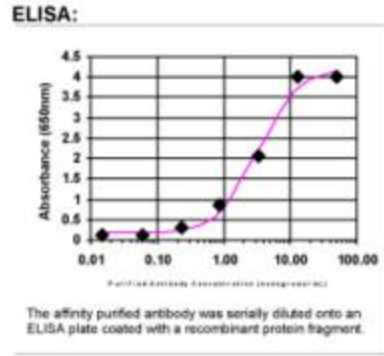
Product data:

Product Type:	Primary Antibodies
Applications:	ELISA
Recommended Dilution:	ELISA: 1:100-1:2000
Reactivity:	Human
Host:	Rabbit
Isotype:	IgG
Clonality:	Polyclonal
Immunogen:	DNA immunization. This antibody is specific for the C Terminus Region of the target protein.
Formulation:	20 mM Potassium Phosphate, 150 mM Sodium Chloride, pH 7.0
Concentration:	0.6781 mg/ml
Purification:	Purified from mouse ascites fluids or tissue culture supernatant by affinity chromatography (protein A/G)
Conjugation:	Unconjugated
Storage:	Store at -20°C as received.
Stability:	Stable for 12 months from date of receipt.
Gene Name:	PBX homeobox 3
Database Link:	NP_006186 Entrez Gene 5090 Human P40426
Background:	PBX3 is a transcriptional activator that binds the sequence 5'-ATCAATCAA-3'.
Synonyms:	OTTHUMP00000022145; OTTHUMP00000064213; pre-B-cell leukemia homeobox 3; pre-B-cell leukemia transcription factor 3
Note:	This antibody was generated by SDIX's Genomic Antibody Technology® (GAT). Learn about GAT
Protein Families:	Transcription Factors



[View online »](#)

Product images:



ELISA: Pbx3 Antibody - Affinity Purified