

Product datasheet for **TA590578**

BOB1 (POU2AF1) Rabbit Polyclonal Antibody

Product data:

Product Type:	Primary Antibodies
Applications:	ELISA, WB
Recommended Dilution:	WB 1:5000~20000,ELISA 1:100-1:2000
Reactivity:	Human
Host:	Rabbit
Isotype:	IgG
Clonality:	Polyclonal
Immunogen:	DNA immunization. This antibody is specific for the C Terminus Region of the target protein.
Formulation:	20 mM Potassium Phosphate, 150 mM Sodium Chloride, pH 7.0
Concentration:	1 mg/ml
Purification:	Purified from mouse ascites fluids or tissue culture supernatant by affinity chromatography (protein A/G)
Conjugation:	Unconjugated
Storage:	Store at -20°C as received.
Stability:	Stable for 12 months from date of receipt.
Gene Name:	POU class 2 homeobox associating factor 1
Database Link:	NP_006226 Entrez Gene 5450 Human Q16633

Background: A novel 35kDa protein designated Bob1 (B cell Oct binding protein 1) is a lymphocyte specific transcription co activator protein. B cell specific transcription is mediated by octamer motifs found in immunoglobulin heavy and light chain gene promoters and in some immunoglobulin enhancers. These sites are bound by the B cell specific Oct1 and Oct2 transcription factors, and the B cell restricted co activator BOB.1/OBF.1. This protein interacts only with the Oct1/2 proteins through sub domains in the POU domain of the Oct1/2 proteins, enhancing their transcriptional efficacy. Although having no intrinsic capacity for DNA binding, Bob1 associates tightly with the octomer motif in the presence of Oct1 and Oct2. Bob1 is expressed at highest levels in spleen and peripheral blood leukocytes.

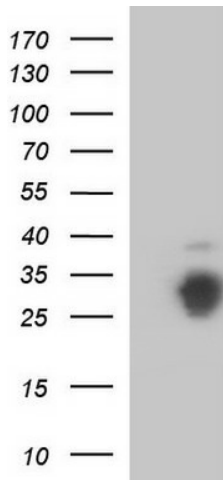


[View online »](#)

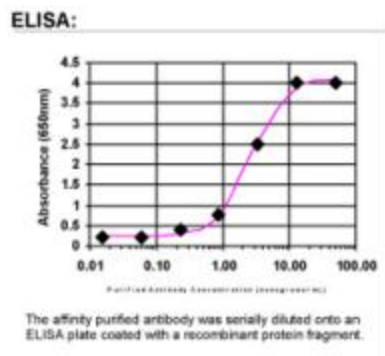
Synonyms: BOB1; OBF-1; OBF1; OCAB

Note: This antibody was generated by SDIX's Genomic Antibody Technology® (GAT). [Learn about GAT](#)

Product images:



HEK293T cells were transfected with the pCMV6-ENTRY control (Left lane) or pCMV6-ENTRY POU2AF1 ([RC207562], Right lane) cDNA for 48 hrs and lysed. Equivalent amounts of cell lysates (5 ug per lane) were separated by SDS-PAGE and immunoblotted with anti-POU2. Positive lysates [LY416779] (100ug) and [LC416779] (20ug) can be purchased separately from OriGene.



ELISA: BOB1 Antibody