

Product datasheet for **TA590572**

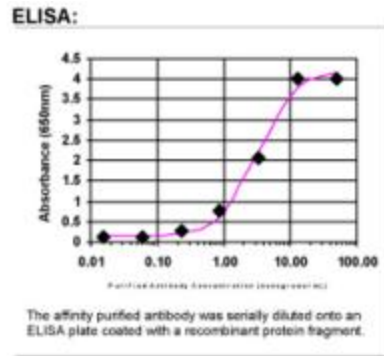
ARFGEF2 Rabbit Polyclonal Antibody

Product data:

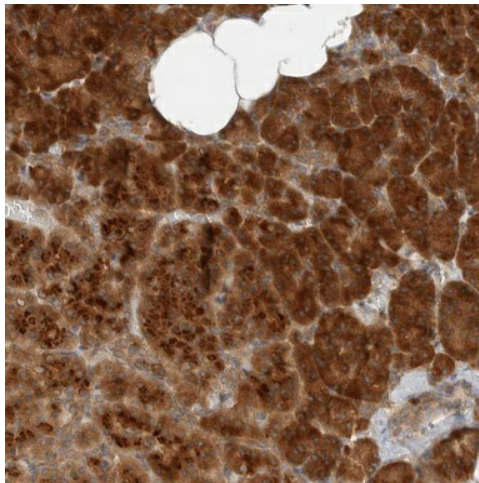
Product Type:	Primary Antibodies
Applications:	ELISA, IF, IHC
Recommended Dilution:	ELISA: 1:100-1:2000; IHC: 1:350; IF: 1:87
Reactivity:	Human
Host:	Rabbit
Isotype:	IgG
Clonality:	Polyclonal
Immunogen:	DNA immunization. This antibody is specific for the N Terminus Region of the target protein.
Formulation:	20 mM Potassium Phosphate, 150 mM Sodium Chloride, pH 7.0
Concentration:	1.14599 mg/ml
Purification:	Purified from mouse ascites fluids or tissue culture supernatant by affinity chromatography (protein A/G)
Conjugation:	Unconjugated
Storage:	Store at -20°C as received.
Stability:	Stable for 12 months from date of receipt.
Gene Name:	ADP ribosylation factor guanine nucleotide exchange factor 2
Database Link:	NP_006411 Entrez Gene 10564 Human Q9Y6D5
Background:	BIG2 promotes guanine-nucleotide exchange on ARF1, ARF5 and ARF6. Promotes the activation of ARF1/ARF5/ARF6 through replacement of GDP with GTP. ARFGEF2 plays an important role in vesicular and membrane trafficking from the trans-golgi network. It is also involved in the activation of ARFs (1,5, and 6) by accelerating replacement of bound GDP with GTP. It also acts as the activator of ADP-ribosylation factor GTPases that are essential for regulating vesicular traffic among intracellular organelles.
Synonyms:	BIG2; dj1164110.1; PVNH2
Note:	This antibody was generated by SDIX's Genomic Antibody Technology® (GAT). Learn about GAT



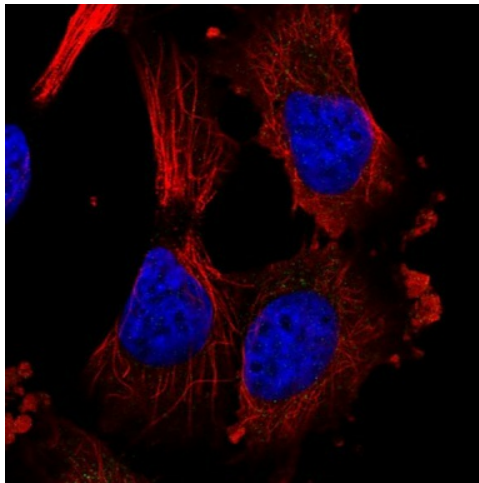
[View online »](#)

Product images:


ELISA: ARFGEF2 Antibody



Immunohistochemical staining of human pancreas shows strong cytoplasmic positivity in exocrine cells. This validation was performed by Protein Atlas and the presentation of data is for informational purposes only.



Immunofluorescent staining of human cell line U-251 MG shows no positivity. This validation was performed by Protein Atlas and the presentation of data is for informational purposes only.