

## Product datasheet for **TA590567**

### PLAGL1 Rabbit Polyclonal Antibody

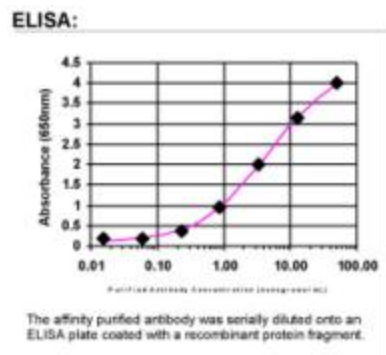
#### Product data:

Product Type:	Primary Antibodies
Applications:	ELISA
Recommended Dilution:	ELISA: 1:100-1:2000
Reactivity:	Human
Host:	Rabbit
Isotype:	IgG
Clonality:	Polyclonal
Immunogen:	DNA immunization. This antibody is specific for the Middle Region of the target protein.
Formulation:	20 mM Potassium Phosphate, 150 mM Sodium Chloride, pH 7.0
Concentration:	0.96934 mg/ml
Purification:	Purified from mouse ascites fluids or tissue culture supernatant by affinity chromatography (protein A/G)
Conjugation:	Unconjugated
Storage:	Store at -20°C as received.
Stability:	Stable for 12 months from date of receipt.
Gene Name:	PLAG1 like zinc finger 1
Database Link:	<a href="#">NP_006709</a> <a href="#">Entrez Gene 5325 Human</a> <a href="#">Q9UM63</a>
Background:	This gene encodes a C2H2 zinc finger protein with transactivation and DNA-binding activity. This gene has been shown to exhibit antiproliferative activities and is a tumor suppressor gene candidate. Many transcript variants encoding two different isoforms have been found for this gene.
Synonyms:	LOT1; ZAC; ZAC1
Note:	This antibody was generated by SDIX's Genomic Antibody Technology® (GAT). <a href="#">Learn about GAT</a>
Protein Families:	Transcription Factors



[View online »](#)

## Product images:



ELISA: PLAGL1 Antibody