

## Product datasheet for **TA590555**

### PLPBP Rabbit Polyclonal Antibody

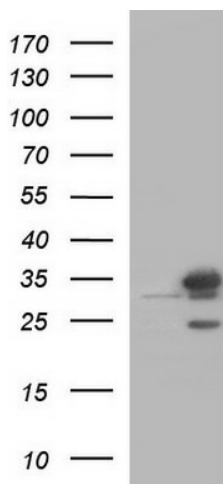
#### Product data:

Product Type:	Primary Antibodies
Applications:	ELISA, IF, IHC, WB
Recommended Dilution:	WB 1:20000, IHC 1:150,ELISA 1:100-1:2000
Reactivity:	Human
Host:	Rabbit
Isotype:	IgG
Clonality:	Polyclonal
Immunogen:	DNA immunization. This antibody is specific for the C Terminus Region of the target protein.
Formulation:	20 mM Potassium Phosphate, 150 mM Sodium Chloride, pH 7.0
Concentration:	1.25mg/ml
Purification:	Purified from mouse ascites fluids or tissue culture supernatant by affinity chromatography (protein A/G)
Conjugation:	Unconjugated
Storage:	Store at -20°C as received.
Stability:	Stable for 12 months from date of receipt.
Gene Name:	pyridoxal phosphate binding protein
Database Link:	<a href="#">NP_009129</a> <a href="#">Entrez Gene 11212 Human</a> <a href="#">O94903</a>
Synonyms:	FLJ11861
Note:	This antibody was generated by SDIX's Genomic Antibody Technology® (GAT). <a href="#">Learn about GAT</a>

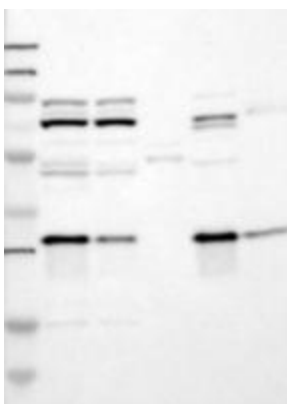


[View online »](#)

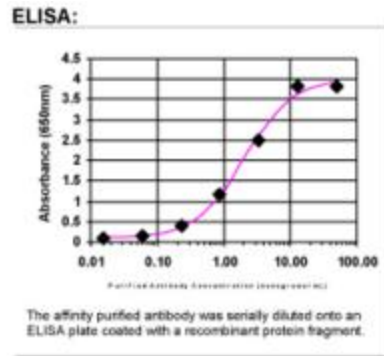
**Product images:**



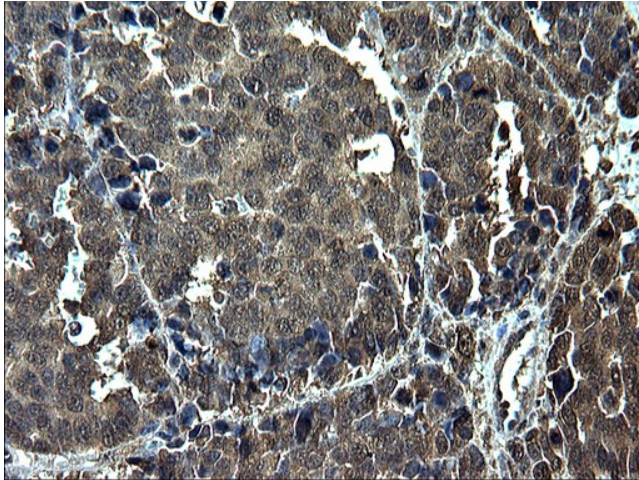
HEK293T cells were transfected with the pCMV6-ENTRY control (Left lane) or pCMV6-ENTRY PROSC ([RC200853], Right lane) cDNA for 48 hrs and lysed. Equivalent amounts of cell lysates (5 ug per lane) were separated by SDS-PAGE and immunoblotted with anti-PROSC. Positive lysates [LY416132] (100ug) and [LC416132] (20ug) can be purchased separately from OriGene.



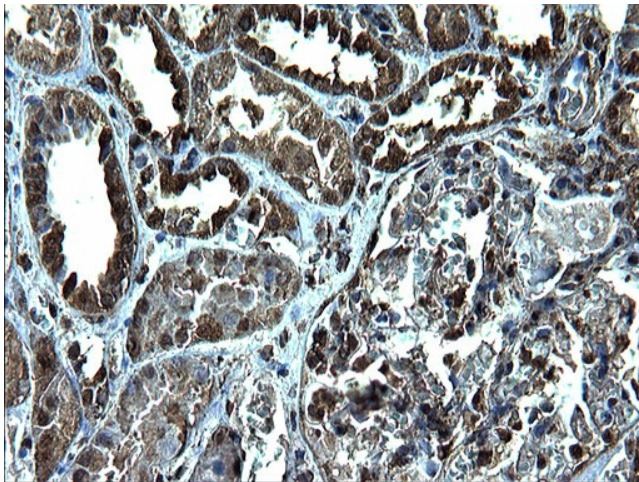
Western Blot: PROSC Antibody - Samples: Lane 1, Marker: 250, 130, 95, 72, 55, 36, 28, 17, 11 Lane 2, RT-4 Lane 3, U-251MG sp Lane 4, Human Plasma Lane 5, Liver Lane 6, Tonsil, Target weight: 30 Validation score: 2 Validation description: Supportive - Band of predicted size in kDa (+/- 20%) with additional bands present.



ELISA: PROSC Antibody

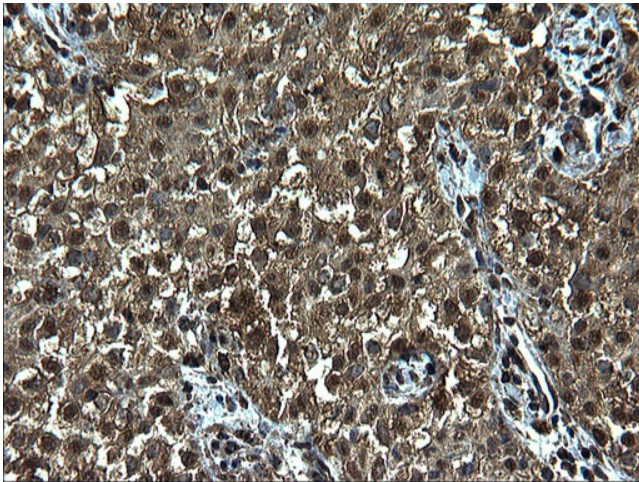


Immunohistochemical staining of paraffin-embedded Adenocarcinoma of Human colon tissue using anti-PROSC Rabbit Polyclonal antibody. (TA590555)

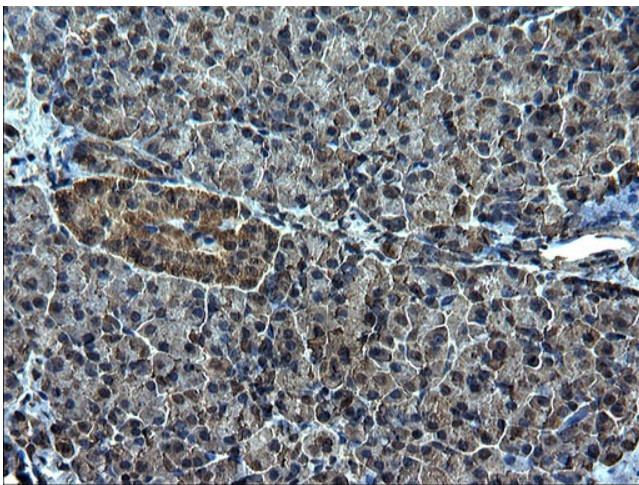


Immunohistochemical staining of paraffin-embedded Human Kidney tissue using anti-PROSC Rabbit Polyclonal antibody. (TA590555)

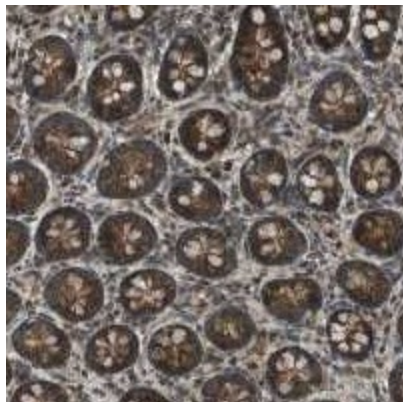




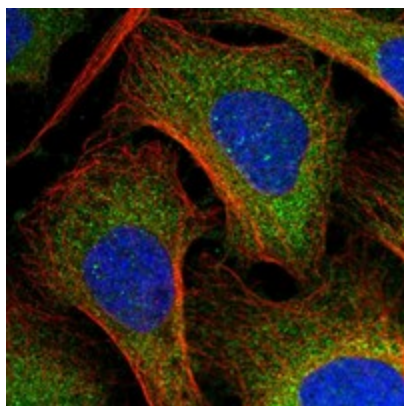
Immunohistochemical staining of paraffin-embedded Carcinoma of Human liver tissue using anti-PROSC Rabbit Polyclonal antibody. (TA590555)



Immunohistochemical staining of paraffin-embedded Human pancreas tissue using anti-PROSC Rabbit Polyclonal antibody. (TA590555)



Immunohistochemical staining of human small intestine shows strong cytoplasmic positivity in glandular cells. Antibody dilution: 1:500. Image and statement courtesy of the Human Protein Atlas (HPA).



Immunofluorescent staining of human cell line U-2 OS shows positivity in cytoplasm. Antibody dilution: 1:75. Image and statement courtesy of the Human Protein Atlas (HPA).