

Product datasheet for **TA590549**

BRCA1 Rabbit Polyclonal Antibody

Product data:

Product Type:	Primary Antibodies
Applications:	ELISA, WB
Recommended Dilution:	WB: 1:5000-1:20000; ELISA: 1:100-1:2000
Reactivity:	Human
Host:	Rabbit
Isotype:	IgG
Clonality:	Polyclonal
Immunogen:	DNA immunization. This antibody is specific for the C Terminus Region of the target protein.
Formulation:	20 mM Potassium Phosphate, 150 mM Sodium Chloride, pH 7.0
Concentration:	1.2mg/ml
Purification:	Purified from mouse ascites fluids or tissue culture supernatant by affinity chromatography (protein A/G)
Conjugation:	Unconjugated
Storage:	Store at -20°C as received.
Stability:	Stable for 12 months from date of receipt.
Gene Name:	BRCA1 DNA repair associated
Database Link:	NP_009225 Entrez Gene 672 Human P38398



[View online »](#)

Background:

BRCA1 (breast and ovarian cancer susceptibility protein 1) is a RING finger protein containing a BRCT domain. BRCA1 exists as a heterodimer with 22 possible isoforms. The full length protein has a reported molecular weight of 208 kD. BRCA1 localizes to the mitotic spindle microtubules, centriole walls, pericentriolar fibers at centrosomes. Unphosphorylated BRCA1 localizes on chromosomes from metaphase through telophase; phosphorylated BRCA1 resides in inner chromosomal structure, centrosome, cleavage furrow during prophase through telophase, and relocates to the perinuclear region when cells are subjected to IR or UV radiation in S phase. BRCA1 acts as a tumor suppressor and can function as a secreted growth inhibitory protein, participate in transcription coupled repair of oxidative DNA damage, X-chromosome inactivation, and can function as a E3 ubiquitin ligase. BRCA1 can be transcriptionally downregulated by Ets-2, Brg-1, and Hmga-1. BRCA1 can be modified by glycosylation, ubiquitination and phosphorylation by CDK4, ATM/ATR, cdk2, and hChk2. The BRCA1 protein has been reported to interact with RNA polymerase II holoenzyme and BARD1. BRCA1 contains at least two nuclear localization signals and is proposed to be a tumor suppressor protein. It is a serine phosphoprotein that undergoes hyperphosphorylation during late G1 and S phases of the cell cycle and is transiently dephosphorylated early after M phase. BRCA1 protein alters in a qualitative and quantitative manner during cell cycle progression. The amount of BRCA1 protein is highest during S phase and remains elevated toward G2 / M, before it declines in early G1 phase. Inherited loss of BRCA1 function confers an increased susceptibility for both breast and ovarian cancer.

Synonyms:

BRCA1; BRCC1; BROVCA1; FANCS; IRIS; PNCA4; PPP1R53; PSCP; RNF53

Note:

This antibody was generated by SDIX's Genomic Antibody Technology® (GAT). [Learn about GAT](#)

Protein Families:

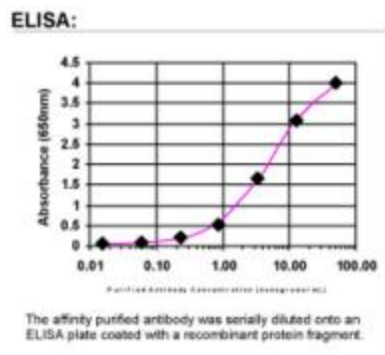
Druggable Genome, Transcription Factors

Protein Pathways:

Ubiquitin mediated proteolysis

Product images:

Western Blot: BRCA1 Antibody - Western Blot was performed using affinity purified SEQer BRCA1 antibody, aa (1439-1538) antibody. The lanes contain 5-30ug of a whole cell extract. Final concentration of antibodies = 0.1ug/ml (1:10,000 dilution). The blot was probed overnight with the SEQer BRCA1 antibody, aa (1439-1538) antibody. Blot was then washed according to protocol and probed with goat-anti-Rabbit-HRP conjugate at 1:5000 dilution, washed and developed using chemiluminescence (film exposure 5-30sec). The protein was detected as represented by the band shown.



ELISA: BRCA1 Antibody