

Product datasheet for **TA590542**

ANKRD11 Rabbit Polyclonal Antibody

Product data:

Product Type:	Primary Antibodies
Applications:	ELISA, IF, IHC, WB
Recommended Dilution:	ELISA: 1:100-1:2000; IHC: 1:200; IF: 1:50
Reactivity:	Human
Host:	Rabbit
Isotype:	IgG
Clonality:	Polyclonal
Immunogen:	DNA immunization. This antibody is specific for the C Terminus Region of the target protein.
Formulation:	20 mM Potassium Phosphate, 150 mM Sodium Chloride, pH 7.0
Concentration:	1.2 mg/ml
Purification:	Purified from mouse ascites fluids or tissue culture supernatant by affinity chromatography (protein A/G)
Conjugation:	Unconjugated
Storage:	Store at -20°C as received.
Stability:	Stable for 12 months from date of receipt.
Gene Name:	ankyrin repeat domain 11
Database Link:	NP_037407 Entrez Gene 29123 Human Q6UB99



[View online »](#)

Background:

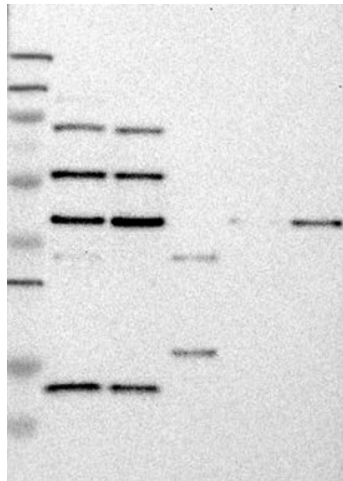
Ankyrin is a membrane protein that mediates the attachment of the erythrocyte membrane skeleton to the plasma membrane and interacts with CD44 and inositol triphosphate. It contains three functional domains: a conserved N-terminal ankyrin repeat domain (ARD (consisting of 22-24 tandem repeats of 33 amino acids), a spectrin binding domain and a variably sized C-terminal regulatory domain. The ankyrin repeat is a 33-residue motif in proteins consisting of two alpha helices separated by loops. It has been studied using multiple sequence alignment to determine which conserved amino acid residues are critical for folding and stability. Ankyrin-repeat proteins have been associated with a number of human diseases; most notably, the cell cycle inhibitor p16 is associated with cancer and the Notch protein is a key component of cell signaling pathways whose intracellular repeat domain is disrupted in mutations that give rise to the neurological disorder known as CADASIL.

Synonyms:

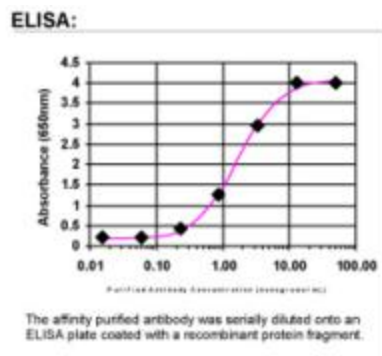
ANCO-1; ANCO1; LZ16; T13

Note:

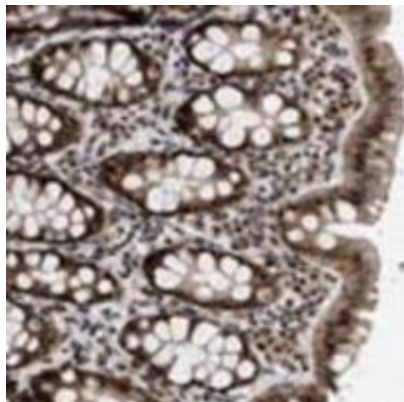
This antibody was generated by SDIX's Genomic Antibody Technology® (GAT). [Learn about GAT](#)

Product images:


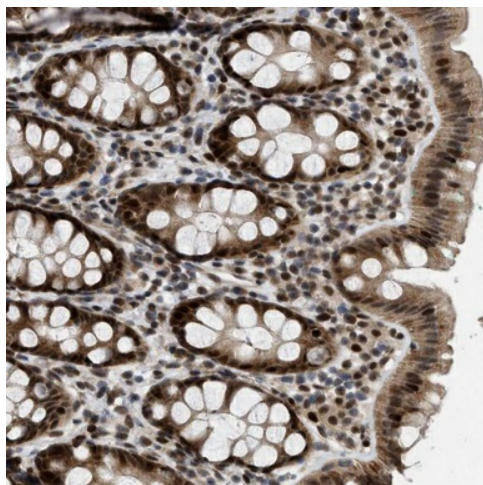
Lane 1: Marker [kDa] 250, 130, 95, 72, 55, 36, 28, 17, 11; Lane 2: RT-4; Lane 3: U-251 MG; Lane 4: Human Plasma; Lane 5: Liver; Lane 6: Tonsil. This validation was performed by Protein Atlas and the presentation of data is for informational purposes only.



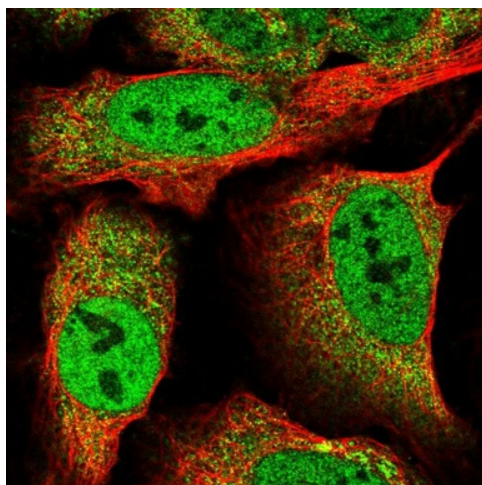
ELISA: ANKRD11 Antibody



Immunohistochemistry: ANKRD11 Antibody - Most of the normal cells showed strong nuclear positivity with an additional weaker cytoplasmic staining in many cases. Liver was weakly stained. Malignant cells displayed moderate to strong immunoreactivity. Image and statement courtesy of the Human Protein Atlas (HPA).



Immunohistochemical staining of human rectum shows strong nuclear and a weaker cytoplasmic positivity in glandular cells. This validation was performed by Protein Atlas and the presentation of data is for informational purposes only.



Immunofluorescent staining of human cell line U-2 OS shows positivity in nucleus but not nucleoli & cytoplasm. This validation was performed by Protein Atlas and the presentation of data is for informational purposes only.