

Product datasheet for **TA590541**

TMPRSS11E Rabbit Polyclonal Antibody

Product data:

Product Type:	Primary Antibodies
Applications:	ELISA
Recommended Dilution:	WB: 1:5000-1:20000; ELISA: 1:100-1:2000
Reactivity:	Human
Host:	Rabbit
Isotype:	IgG
Clonality:	Polyclonal
Immunogen:	DNA immunization. This antibody is specific for the Middle Region of the target protein.
Formulation:	20 mM Potassium Phosphate, 150 mM Sodium Chloride, pH 7.0
Concentration:	1.02mg/ml
Purification:	Purified from mouse ascites fluids or tissue culture supernatant by affinity chromatography (protein A/G)
Conjugation:	Unconjugated
Storage:	Store at -20°C as received.
Stability:	Stable for 12 months from date of receipt.
Gene Name:	transmembrane serine protease 11E
Database Link:	NP_054777 Entrez Gene 28983 Human Q9UL52



[View online »](#)

Background:

TMPRSS11E is a member of a larger family of membrane attached serine proteases, a poorly defined group that includes TMPRSS11A, B, C, D, E, F, Hepsin, Corin, Matriptase 1, 2 and 3. The highest degree of identity is with TMPRSS11A, which shares 43% identity at the amino acid level. TMPRSS11E has a domain structure of an aminoterminal cytoplasmic domain, followed by a transmembrane domain, a SEA domain (Sea urchin sperm protein, Enterokinase, Agrin), a short spacer, then the trypsin like serine protease domain. The SEA domain is thought to play a role in carbohydrate binding in the analogous protein sequences where it is found, but the role in TMPRSS11E is unclear. The cleavage of the Arg191 Ile192 bond liberates the catalytic domain. TMPRSS11E has been shown to cleave fibronectin, gelatin, casein and pro uPA in vitro, and to form complexes with serpinA5 and serpinE1.

Synonyms:

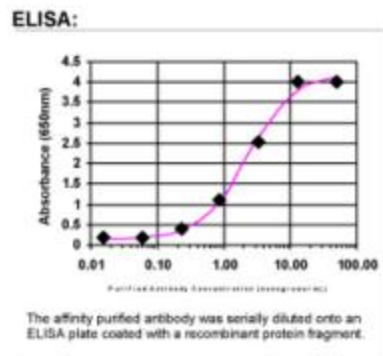
DESC1; TMPRSS11E2

Note:

This antibody was generated by SDIX's Genomic Antibody Technology® (GAT). [Learn about GAT](#)

Protein Families:

Druggable Genome, Protease, Secreted Protein, Transmembrane

Product images:


ELISA: TMPRSS11E Antibody