

## Product datasheet for **TA590537**

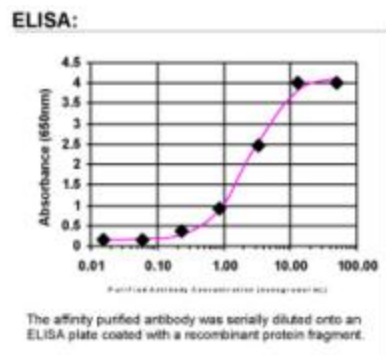
### LIMD1 Rabbit Polyclonal Antibody

#### Product data:

Product Type:	Primary Antibodies
Applications:	ELISA
Recommended Dilution:	WB: 1:5000-1:20000; ELISA: 1:100-1:2000
Reactivity:	Human
Host:	Rabbit
Isotype:	IgG
Clonality:	Polyclonal
Immunogen:	DNA immunization. This antibody is specific for the N Terminus Region of the target protein.
Formulation:	20 mM Potassium Phosphate, 150 mM Sodium Chloride, pH 7.0
Concentration:	0.88686 mg/ml
Purification:	Purified from mouse ascites fluids or tissue culture supernatant by affinity chromatography (protein A/G)
Conjugation:	Unconjugated
Storage:	Store at -20°C as received.
Stability:	Stable for 12 months from date of receipt.
Gene Name:	LIM domain containing 1
Database Link:	<a href="#">NP_055055</a> <a href="#">Entrez Gene 8994 Human</a> <a href="#">Q9UGP4</a>
Background:	LIMD1 is a transcriptional regulator that inhibits E2F-mediated transcription, and suppresses the expression of the majority of genes with E2F1-responsive elements. May act as a tumor suppressor by inhibiting cell proliferation.
Synonyms:	LIM domains containing 1
Note:	This antibody was generated by SDIX's Genomic Antibody Technology ® (GAT). <a href="#">Learn about GAT</a>

[View online »](#)

## Product images:



ELISA: LIMD1 Antibody