

## Product datasheet for **TA590536**

### Encephalopsin (OPN3) Rabbit Polyclonal Antibody

#### Product data:

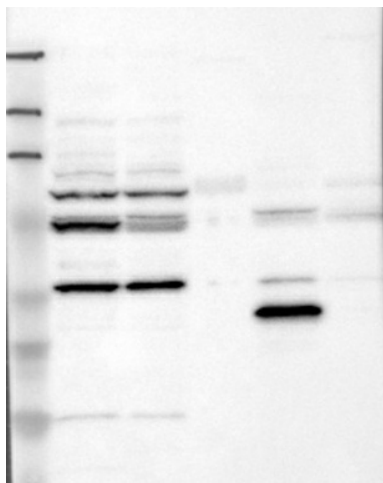
Product Type:	Primary Antibodies
Applications:	ELISA, WB
Recommended Dilution:	WB: 1:500; ELISA: 1:100-1:2000; IHC: 1:750
Reactivity:	Human
Host:	Rabbit
Isotype:	IgG
Clonality:	Polyclonal
Immunogen:	DNA immunization. This antibody is specific for the C Terminus Region of the target protein.
Formulation:	20 mM Potassium Phosphate, 150 mM Sodium Chloride, pH 7.0
Concentration:	1.1mg/ml
Purification:	Purified from mouse ascites fluids or tissue culture supernatant by affinity chromatography (protein A/G)
Conjugation:	Unconjugated
Storage:	Store at -20°C as received.
Stability:	Stable for 12 months from date of receipt.
Gene Name:	opsin 3
Database Link:	<a href="#">NP_055137</a> <a href="#">Entrez Gene 23596 Human</a> <a href="#">Q9H1Y3</a>
Background:	Opsins, including Encephalopsin, are members of the superfamily of guanine nucleotide-binding protein (G protein)-coupled receptors, which function through the activation of a G protein and an effector enzyme. Opsin proteins consist of a single polypeptide chain of 340 to 500 amino acids that form 7 alpha-helical transmembrane regions connected by cytoplasmic and extracellular loops.
Synonyms:	ECPN; PPP1R116
Note:	This antibody was generated by SDIX's Genomic Antibody Technology® (GAT). <a href="#">Learn about GAT</a>



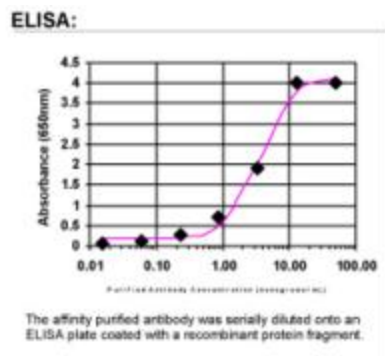
[View online »](#)

Protein Families: Druggable Genome, GPCR, Transmembrane

**Product images:**



Lane 1: Marker [kDa] 213, 118, 83, 50, 33, 26, 18;  
 Lane 2: RT-4; Lane 3: U-251 MG; Lane 4: Human Plasma; Lane 5: Liver; Lane 6: Tonsil  
 This validation was performed by Protein Atlas and the presentation of data is for informational purposes only.



ELISA: Opsin 3 Antibody