

## Product datasheet for **TA590529**

### PHF16 (JADE3) Rabbit Polyclonal Antibody

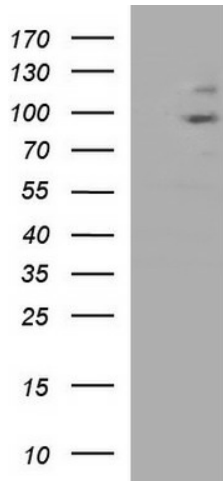
#### Product data:

Product Type:	Primary Antibodies
Applications:	ELISA, WB
Recommended Dilution:	WB 1:5000~20000, ELISA 1:100-1:2000
Reactivity:	Human
Host:	Rabbit
Isotype:	IgG
Clonality:	Polyclonal
Immunogen:	DNA immunization. This antibody is specific for the C Terminus Region of the target protein.
Formulation:	20 mM Potassium Phosphate, 150 mM Sodium Chloride, pH 7.0
Concentration:	1.27007 mg/ml
Purification:	Purified from mouse ascites fluids or tissue culture supernatant by affinity chromatography (protein A/G)
Conjugation:	Unconjugated
Storage:	Store at -20°C as received.
Stability:	Stable for 12 months from date of receipt.
Gene Name:	jade family PHD finger 3
Database Link:	<a href="#">NP_055550</a> <a href="#">Entrez Gene 9767 Human Q92613</a>
Background:	This gene is part of a gene cluster on chromosome Xp11.23. The encoded protein contains a zinc finger motif often found in transcriptional regulators, however, its exact function is not known. Alternative splicing results in multiple transcript variants encoding the same protein.
Synonyms:	JADE-3; PHF16
Note:	This antibody was generated by SDIX's Genomic Antibody Technology® (GAT). <a href="#">Learn about GAT</a>
Protein Families:	Druggable Genome, Transcription Factors



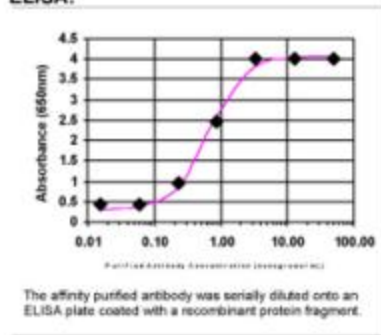
[View online »](#)

Product images:



HEK293T cells were transfected with the pCMV6-ENTRY control (Cat# [PS100001], Left lane) or pCMV6-ENTRY PHF16 (Cat# [RC219274], Right lane) cDNA for 48 hrs and lysed. Equivalent amounts of cell lysates (5 ug per lane) were separated by SDS-PAGE and immunoblotted with anti-PHF16(Cat# TA590529). Positive lysates [LY415071] (100ug) and [LC415071] (20ug) can be purchased separately from OriGene.

ELISA:



ELISA: PHF16 Antibody