

Product datasheet for **TA590527**

SV2A Rabbit Polyclonal Antibody

Product data:

Product Type:	Primary Antibodies
Applications:	ELISA
Recommended Dilution:	ELISA: 1:100-1:2000
Reactivity:	Human
Host:	Rabbit
Isotype:	IgG
Clonality:	Polyclonal
Immunogen:	DNA immunization. This antibody is specific for the N Terminus Region of the target protein.
Formulation:	20 mM Potassium Phosphate, 150 mM Sodium Chloride, pH 7.0
Concentration:	1.17372 mg/ml
Purification:	Purified from mouse ascites fluids or tissue culture supernatant by affinity chromatography (protein A/G)
Conjugation:	Unconjugated
Storage:	Store at -20°C as received.
Stability:	Stable for 12 months from date of receipt.
Gene Name:	synaptic vesicle glycoprotein 2A
Database Link:	NP_055664 Entrez Gene 9900 Human Q7L0J3



[View online »](#)

Background:

SV2s (Synaptic Vesicle protein 2) are integral membrane glycoproteins present in all synaptic vesicles. They have 12 transmembrane domains predicted by sequence analysis. There are three characterized isoforms, SV2A, SV2B and SV2C. SV2A is expressed ubiquitously throughout the brain. SV2B has a more restricted distribution with varying degrees of coexpression with SV2A. SV2C is more closely related to SV2A but shows a very restricted expression pattern. The highest expression levels were observed in phylogenetically old brain areas like pallidum, the midbrain and the olfactory bulb. SV2A is probably involved in the maintenance of a pool of synaptic vesicles competent for calcium-stimulated exocytosis. SV2A is a highly glycosylated synaptic vesicle protein with homology to transmembrane transporters.

Synonyms:

SV2

Note:

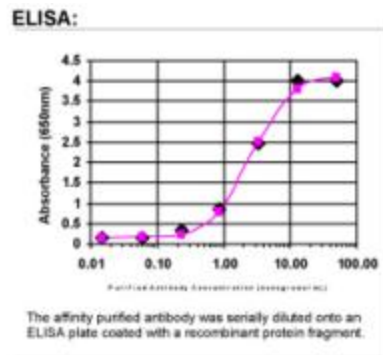
This antibody was generated by SDIX's Genomic Antibody Technology® (GAT). [Learn about GAT](#)

Protein Families:

Secreted Protein, Transmembrane

Protein Pathways:

ECM-receptor interaction

Product images:

ELISA: SV2A Antibody