

## Product datasheet for **TA590525**

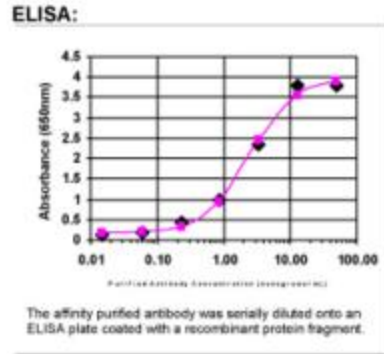
### FIG4 Rabbit Polyclonal Antibody

#### Product data:

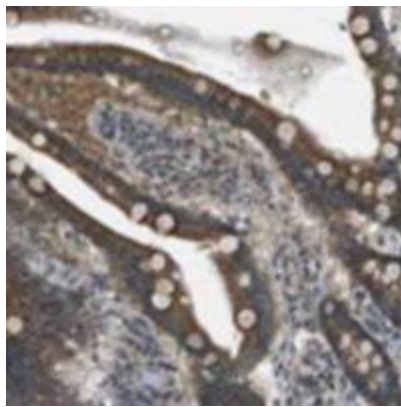
Product Type:	Primary Antibodies
Applications:	ELISA, IF, IHC
Recommended Dilution:	WB: 1:500; ELISA: 1:100-1:2000; IHC: 1:300; IF: 1:25
Reactivity:	Human
Host:	Rabbit
Isotype:	IgG
Clonality:	Polyclonal
Immunogen:	DNA immunization. This antibody is specific for the N Terminus Region of the target protein.
Formulation:	20 mM Potassium Phosphate, 150 mM Sodium Chloride, pH 7.0
Concentration:	0.72mg/ml
Purification:	Purified from mouse ascites fluids or tissue culture supernatant by affinity chromatography (protein A/G)
Conjugation:	Unconjugated
Storage:	Store at -20°C as received.
Stability:	Stable for 12 months from date of receipt.
Gene Name:	FIG4 phosphoinositide 5-phosphatase
Database Link:	<a href="#">NP_055660</a> <a href="#">Entrez Gene 9896 Human</a> <a href="#">Q92562</a>
Background:	The PI(3,5)P2 regulatory complex regulates both the synthesis and turnover of phosphatidylinositol-3,5-bisphosphate (PtdIns(3,5)P2). In vitro, hydrolyzes all three D5-phosphorylated polyphosphoinositide substrates in the order PtdIns(4,5)P2 > PtdIns(3,5)P2 > PtdIns(3,4,5)P3. Plays a role in the biogenesis of endosome carrier vesicles (ECV) / multivesicular bodies (MVB) transport intermediates from early endosomes.
Synonyms:	ALS11; BTOP; CMT4J; dj249I4.1; KIAA0274; SAC3; YVS
Note:	This antibody was generated by SDIX's Genomic Antibody Technology® (GAT). <a href="#">Learn about GAT</a>



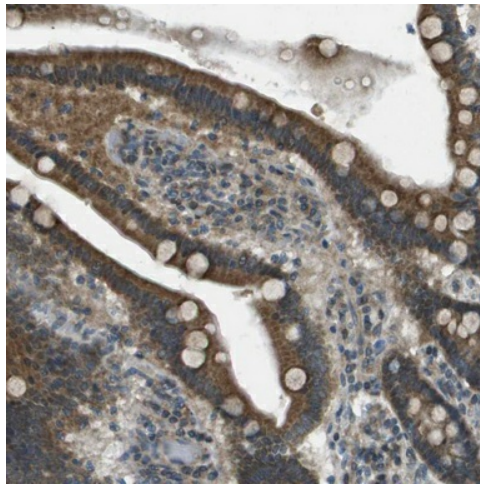
[View online »](#)

**Product images:**


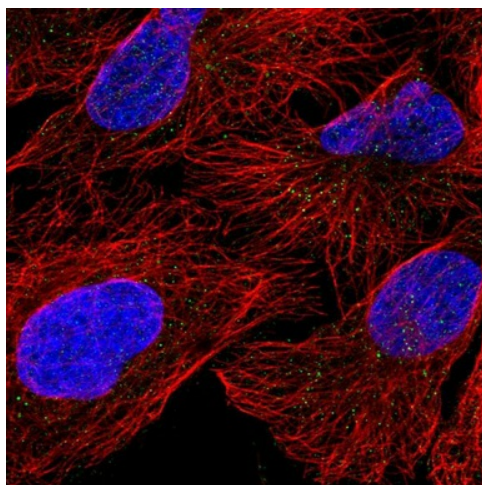
ELISA: FIG4 Antibody



Immunohistochemistry: FIG4 Antibody - Most of the normal tissues displayed moderate to strong cytoplasmic positivity which was occasionally accompanied with nuclear staining. Malignant tissues exhibited in most cases moderate cytoplasmic immunoreactivity. Strong staining was observed in several tumors but was most prominent in colo-rectal and stomach cancers. Image and statement courtesy of the Human Protein Atlas (HPA).



Immunohistochemical staining of human duodenum shows strong positivity in glandular cells. This validation was performed by Protein Atlas and the presentation of data is for informational purposes only.



Immunofluorescent staining of human cell line U-2 OS shows no positivity. This validation was performed by Protein Atlas and the presentation of data is for informational purposes only.