

## Product datasheet for **TA590524**

### **KPI2 (LMTK2) Rabbit Polyclonal Antibody**

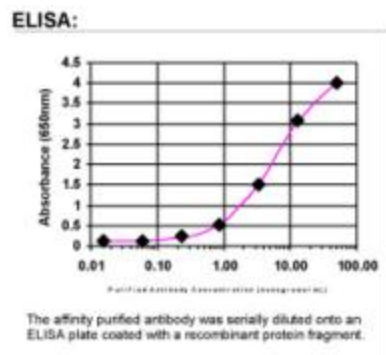
#### **Product data:**

Product Type:	Primary Antibodies
Applications:	ELISA
Recommended Dilution:	WB: 1:5000-1:20000; ELISA: 1:100-1:2000
Reactivity:	Human
Host:	Rabbit
Isotype:	IgG
Clonality:	Polyclonal
Immunogen:	DNA immunization. This antibody is specific for the Middle Region of the target protein.
Formulation:	20 mM Potassium Phosphate, 150 mM Sodium Chloride, pH 7.0
Concentration:	0.90219 mg/ml
Purification:	Purified from mouse ascites fluids or tissue culture supernatant by affinity chromatography (protein A/G)
Conjugation:	Unconjugated
Storage:	Store at -20°C as received.
Stability:	Stable for 12 months from date of receipt.
Gene Name:	lemur tyrosine kinase 2
Database Link:	<a href="#">NP_055731</a> <a href="#">Entrez Gene 22853 Human</a> <a href="#">Q8IWU2</a>
Background:	LMTK2 phosphorylates PPP1C, phosphorylase b and CFTR.
Synonyms:	AATYK2; BREK; cprk; hBREK; KPI-2; KPI2; LMR2; PPP1R100
Note:	This antibody was generated by SDIX's Genomic Antibody Technology® (GAT). <a href="#">Learn about GAT</a>
Protein Families:	Druggable Genome, Protein Kinase, Transmembrane



[View online »](#)

## Product images:



ELISA: LMTK2 Antibody