

## Product datasheet for **TA590522**

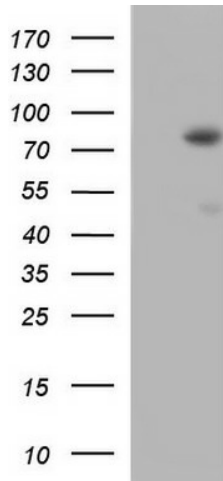
### ANKRD6 Rabbit Polyclonal Antibody

#### Product data:

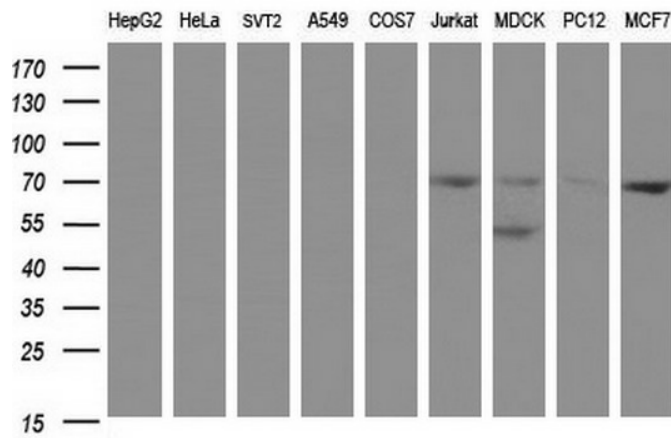
Product Type:	Primary Antibodies
Applications:	ELISA, IHC, WB
Recommended Dilution:	WB 1:5000~20000, IHC 1:150,ELISA 1:100-1:2000
Reactivity:	Human, Dog, Rat
Host:	Rabbit
Isotype:	IgG
Clonality:	Polyclonal
Immunogen:	DNA immunization. This antibody is specific for the C Terminus Region of the target protein.
Formulation:	20 mM Potassium Phosphate, 150 mM Sodium Chloride, pH 7.0
Concentration:	1.28978 mg/ml
Purification:	Purified from mouse ascites fluids or tissue culture supernatant by affinity chromatography (protein A/G)
Conjugation:	Unconjugated
Storage:	Store at -20°C as received.
Stability:	Stable for 12 months from date of receipt.
Gene Name:	ankyrin repeat domain 6
Database Link:	<a href="#">NP_055757</a> <a href="#">Entrez Gene 500430 Rat</a> <a href="#">Entrez Gene 481919 Dog</a> <a href="#">Entrez Gene 22881 Human</a> <a href="#">Q9Y2G4</a>
Background:	ANKRD6 recruits CKI-epsilon to the beta-catenin degradation complex that consists of AXN1 or AXN2 and GSK3-beta and allows efficient phosphorylation of beta-catenin, thereby inhibiting beta-catenin/Tcf signals (By similarity).
Synonyms:	FLJ12637; FLJ34916
Note:	This antibody was generated by SDIX's Genomic Antibody Technology® (GAT). <a href="#">Learn about GAT</a>



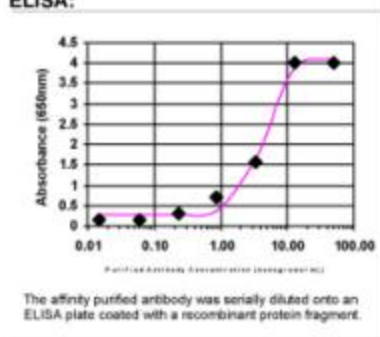
[View online »](#)

**Product images:**


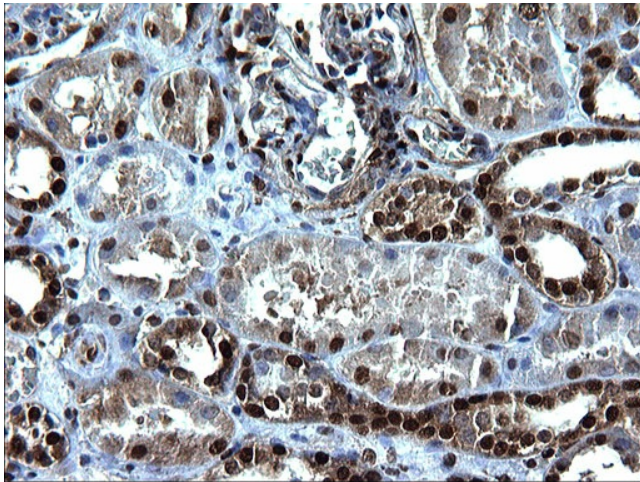
HEK293T cells were transfected with the pCMV6-ENTRY control (Cat# [PS100001], Left lane) or pCMV6-ENTRY ANKRD6 (Cat# [RC208320], Right lane) cDNA for 48 hrs and lysed. Equivalent amounts of cell lysates (5 ug per lane) were separated by SDS-PAGE and immunoblotted with anti-ANKRD(Cat# TA590522). Positive lysates [LY414908] (100ug) and [LC414908] (20ug) can be purchased separately from OriGene.



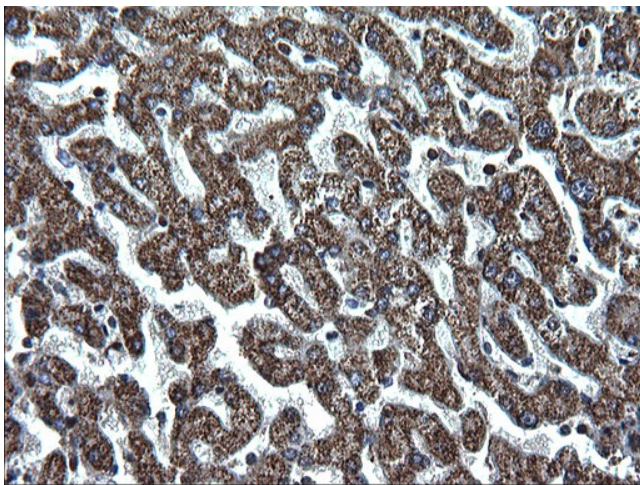
Western blot analysis of extracts (35ug) from 9 different cell lines by using anti-ANKRD6 polyclonal antibody (HepG2: human; HeLa: human; SVT2: mouse; A549: human; COS7: monkey; Jurkat: human; MDCK: canine; PC12: rat; MCF7: human).

**ELISA:**


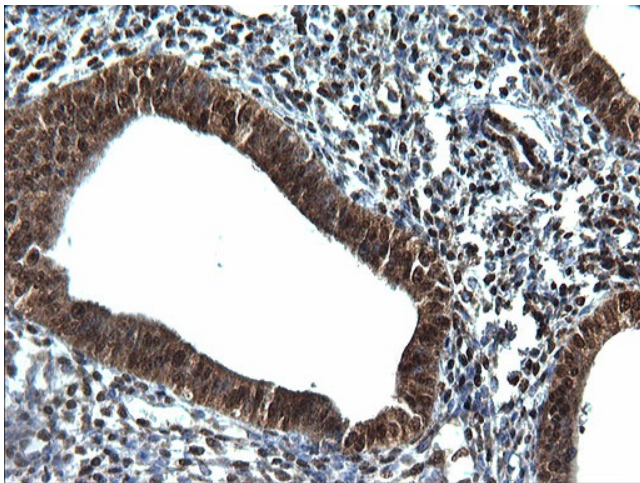
ELISA: ANKRD6 Antibody



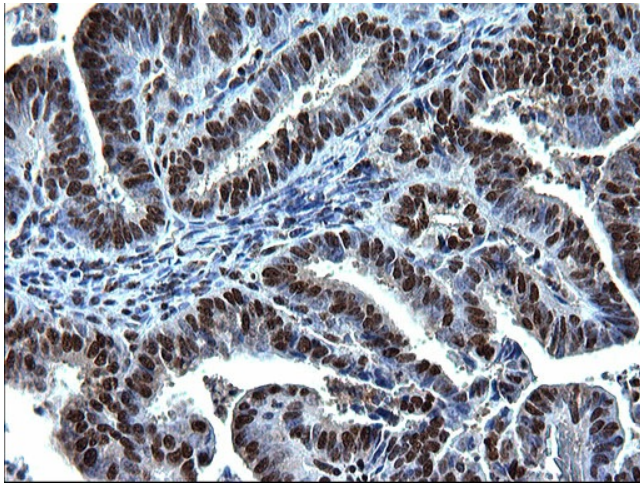
Immunohistochemical staining of paraffin-embedded Human Kidney tissue using anti-ANKRD6 rabbit polyclonal antibody. (TA590522)



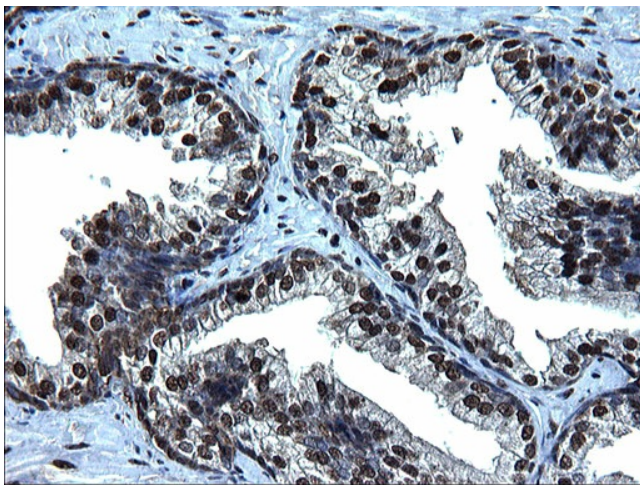
Immunohistochemical staining of paraffin-embedded Human liver tissue using anti-ANKRD6 rabbit polyclonal antibody. (TA590522)



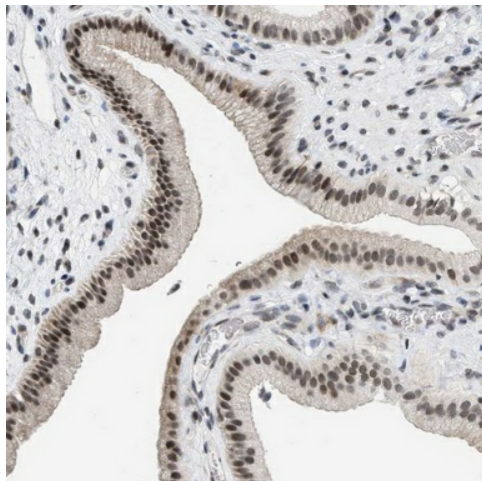
Immunohistochemical staining of paraffin-embedded Human endometrium tissue using anti-ANKRD6 rabbit polyclonal antibody. (TA590522)



Immunohistochemical staining of paraffin-embedded Adenocarcinoma of Human endometrium tissue using anti-ANKRD6 rabbit polyclonal antibody. (TA590522)



Immunohistochemical staining of paraffin-embedded Human prostate tissue using anti-ANKRD6 rabbit polyclonal antibody. (TA590522)



Immunohistochemical staining of human gall bladder shows distinct nuclear positivity in glandular cells. This validation was performed by Protein Atlas and the presentation of data is for informational purposes only.