

## Product datasheet for **TA590519**

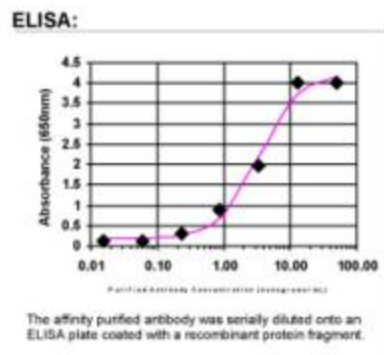
### RGL1 Rabbit Polyclonal Antibody

#### Product data:

Product Type:	Primary Antibodies
Applications:	ELISA
Recommended Dilution:	WB: 1:5000-1:20000; ELISA: 1:100-1:2000
Reactivity:	Human
Host:	Rabbit
Isotype:	IgG
Clonality:	Polyclonal
Immunogen:	DNA immunization. This antibody is specific for the N Terminus Region of the target protein.
Formulation:	20 mM Potassium Phosphate, 150 mM Sodium Chloride, pH 7.0
Concentration:	0.78905 mg/ml
Purification:	Purified from mouse ascites fluids or tissue culture supernatant by affinity chromatography (protein A/G)
Conjugation:	Unconjugated
Storage:	Store at -20°C as received.
Stability:	Stable for 12 months from date of receipt.
Gene Name:	ral guanine nucleotide dissociation stimulator like 1
Database Link:	<a href="#">NP_055964</a> <a href="#">Entrez Gene 23179 Human</a> <a href="#">Q9NZL6</a>
Background:	RGL1 (Ral guanine nucleotide dissociation stimulator-like 1) is a putative guanine nucleotide exchange factor involved in Ras and Ral signaling pathways as a downstream effector protein.
Synonyms:	RGL
Note:	This antibody was generated by SDIX's Genomic Antibody Technology® (GAT). <a href="#">Learn about GAT</a>

[View online »](#)

## Product images:



ELISA: RGL1 Antibody