

Product datasheet for **TA590513**

SLMO2 (PRELID3B) Rabbit Polyclonal Antibody

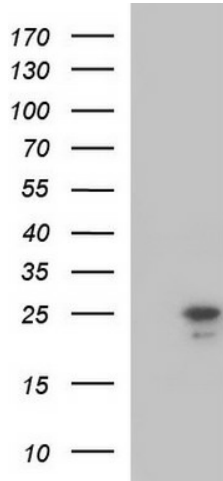
Product data:

Product Type:	Primary Antibodies
Applications:	ELISA, IHC, WB
Recommended Dilution:	WB 1:20000, IHC 1:150,ELISA 1:100-1:2000
Reactivity:	Human
Host:	Rabbit
Isotype:	IgG
Clonality:	Polyclonal
Immunogen:	DNA immunization. This antibody is specific for the C Terminus Region of the target protein.
Formulation:	20 mM Potassium Phosphate, 150 mM Sodium Chloride, pH 7.0
Concentration:	0.96mg/ml
Purification:	Purified from mouse ascites fluids or tissue culture supernatant by affinity chromatography (protein A/G)
Conjugation:	Unconjugated
Storage:	Store at -20°C as received.
Stability:	Stable for 12 months from date of receipt.
Gene Name:	PRELI domain containing 3B
Database Link:	NP_057129 Entrez Gene 51012 Human Q9Y3B1
Synonyms:	C20orf45; dj543j19.5; SLMO2
Note:	This antibody was generated by SDIX's Genomic Antibody Technology® (GAT). Learn about GAT



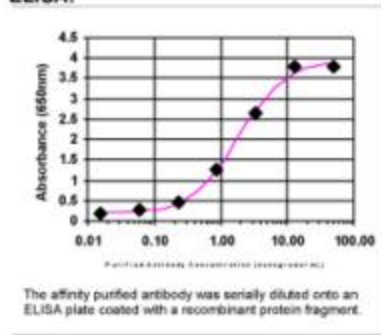
[View online »](#)

Product images:

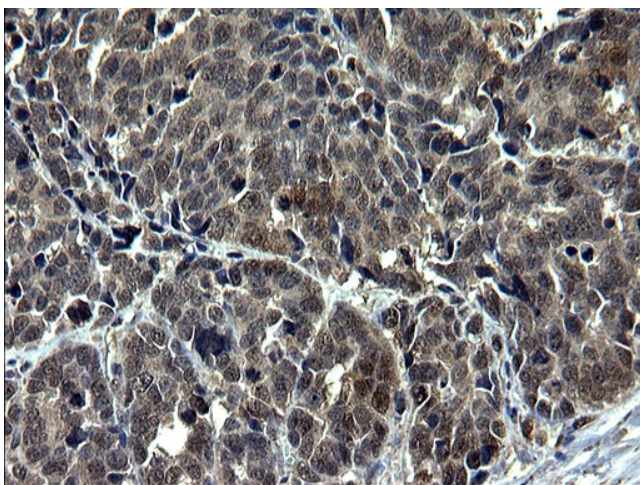


HEK293T cells were transfected with the pCMV6-ENTRY control (Cat# [PS100001], Left lane) or pCMV6-ENTRY SLMO2 (Cat# [RC201029], Right lane) cDNA for 48 hrs and lysed. Equivalent amounts of cell lysates (5 ug per lane) were separated by SDS-PAGE and immunoblotted with anti-SLMO2(Cat# TA590513). Positive lysates [LY414226] (100ug) and [LC414226] (20ug) can be purchased separately from OriGene.

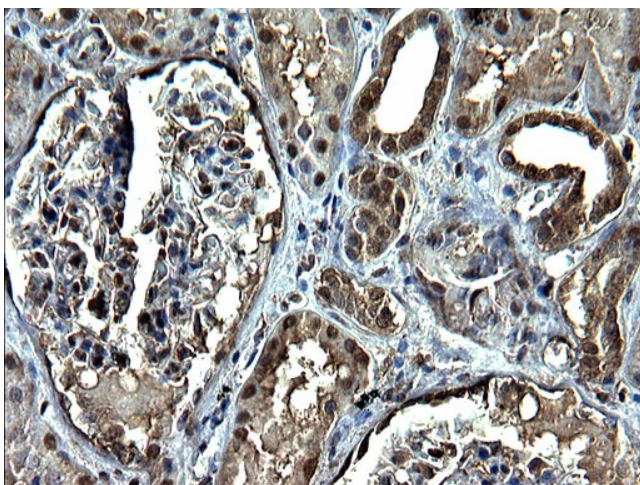
ELISA:



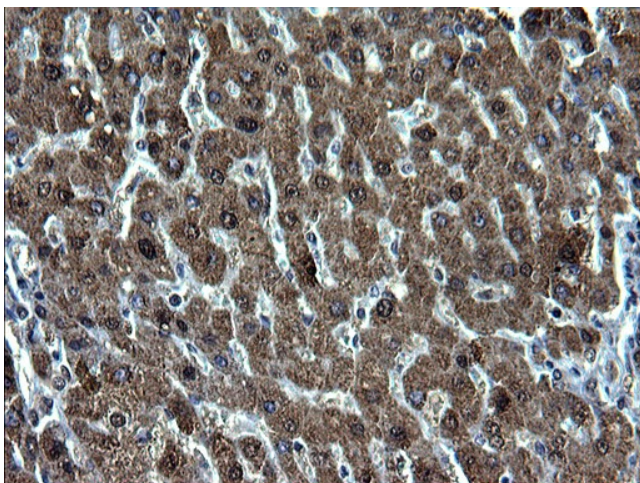
ELISA: SLMO2 Antibody



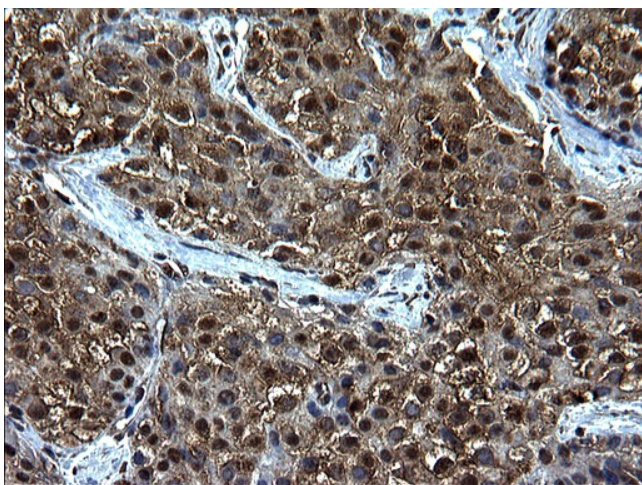
Immunohistochemical staining of paraffin-embedded Adenocarcinoma of Human colon tissue using anti-SLMO2 Rabbit Polyclonal antibody. (TA590513)



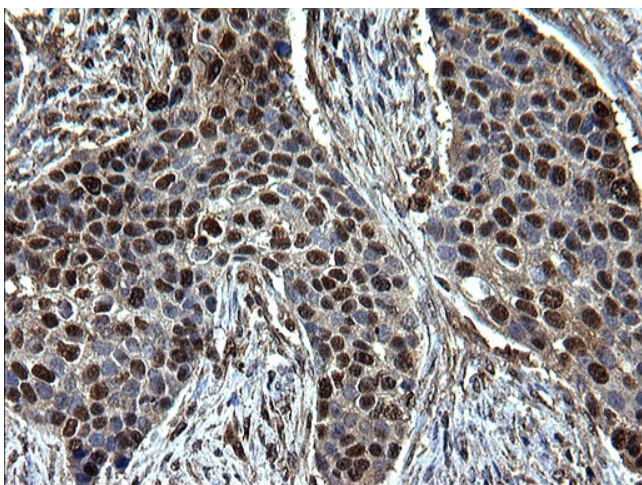
Immunohistochemical staining of paraffin-embedded Human Kidney tissue using anti-SLMO2 Rabbit Polyclonal antibody. (TA590513)



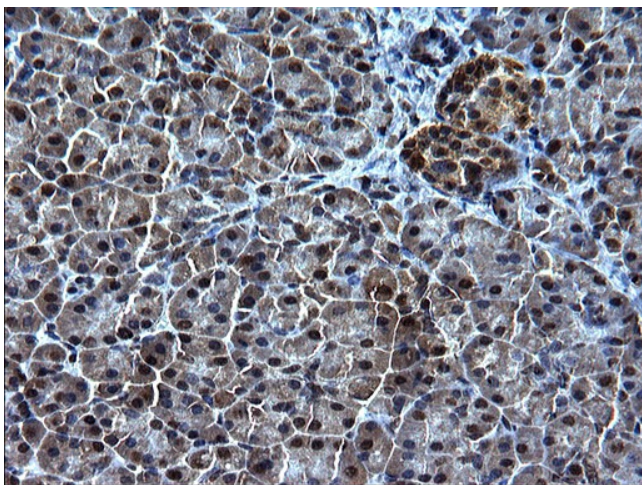
Immunohistochemical staining of paraffin-embedded Human liver tissue using anti-SLMO2 Rabbit Polyclonal antibody. (TA590513)



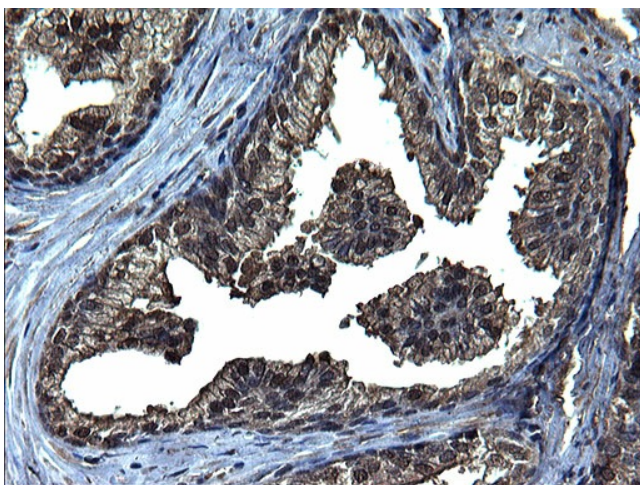
Immunohistochemical staining of paraffin-embedded Carcinoma of Human liver tissue using anti-SLMO2 Rabbit Polyclonal antibody. (TA590513)



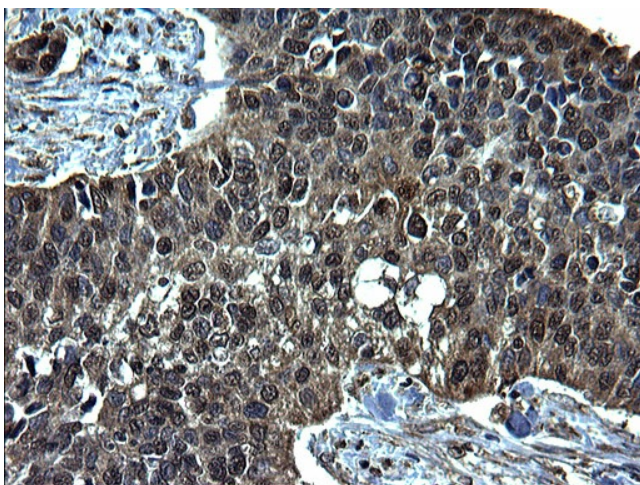
Immunohistochemical staining of paraffin-embedded Carcinoma of Human lung tissue using anti-SLMO2 Rabbit Polyclonal antibody. (TA590513)



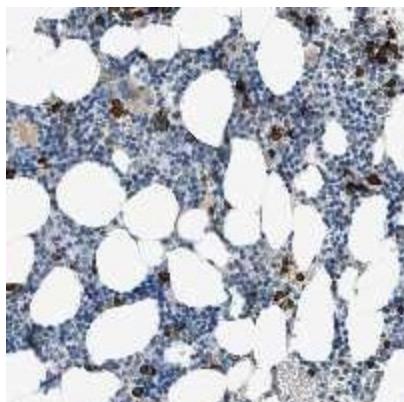
Immunohistochemical staining of paraffin-embedded Human pancreas tissue using anti-SLMO2 Rabbit Polyclonal antibody. (TA590513)



Immunohistochemical staining of paraffin-embedded Human prostate tissue using anti-SLMO2 Rabbit Polyclonal antibody. (TA590513)



Immunohistochemical staining of paraffin-embedded Carcinoma of Human bladder tissue using anti-SLMO2 Rabbit Polyclonal antibody. (TA590513)



Immunohistochemical staining of human bone marrow shows strong positivity in subset of bone marrow poietic cells. Antibody dilution: 1:100. Image and statement courtesy of the Human Protein Atlas (HPA).