

## Product datasheet for **TA590511**

### MMP17 Rabbit Polyclonal Antibody

#### Product data:

Product Type:	Primary Antibodies
Applications:	ELISA, WB
Recommended Dilution:	WB: 1:5000-1:20000; ELISA: 1:100-1:2000
Reactivity:	Human
Host:	Rabbit
Isotype:	IgG
Clonality:	Polyclonal
Immunogen:	DNA immunization. This antibody is specific for the C Terminus Region of the target protein.
Formulation:	20 mM Potassium Phosphate, 150 mM Sodium Chloride, pH 7.0
Concentration:	0.7mg/ml
Purification:	Purified from mouse ascites fluids or tissue culture supernatant by affinity chromatography (protein A/G)
Conjugation:	Unconjugated
Storage:	Store at -20°C as received.
Stability:	Stable for 12 months from date of receipt.
Gene Name:	matrix metalloproteinase 17
Database Link:	<a href="#">NP_057239</a> <a href="#">Entrez Gene 4326 Human</a> <a href="#">Q9ULZ9</a>



[View online »](#)

**Background:**

Membrane type (MT) matrix metalloproteinases (MMPs) are recently recognized members of the family of Zn(2+)- and Ca(2+)-dependent MMPs. MMP-17 is, therefore, a competent Zn(2+)-dependent MMP with unique specificity among synthetic substrates and the capability to both degrade gelatin and activate progelatinase A (1). (MMP-17) is expressed mainly in the brain, leukocytes, the colon, the ovary, and the testis. The expression of MMP-17 in leukocytes together with its putative membrane localization suggest that this enzyme could be involved in the activation of membrane-bound precursors of growth factors or inflammatory mediators such as tumor necrosis factor-alpha (2). glycosylphosphatidylinositol (GPI) anchoring of MT4-MMP on the cell surface indicates a unique biological function and character for this proteinase (3).

**Synonyms:**

MT4-MMP

**Note:**

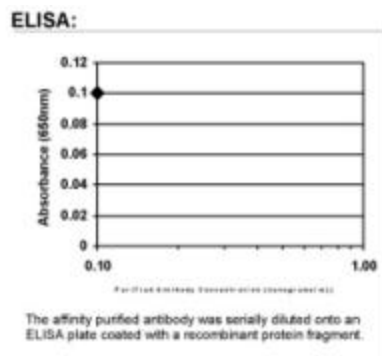
This antibody was generated by SDIX's Genomic Antibody Technology® (GAT). [Learn about GAT](#)

**Protein Families:**

Druggable Genome

**Product images:**


Western Blot: MMP17 Antibody - Western Blot was performed using affinity purified SEQer MMP17 antibody. The lanes contain 5-30ug of a whole cell extract. Final concentration of antibodies = 0.1ug/ml (1:10,000 dilution). The blot was probed overnight with the SEQer MMP17 antibody. Blot was then washed according to protocol and probed with goat-anti-Rabbit-HRP conjugate at 1:5000 dilution, washed and developed using chemiluminescence (film exposure 5-30sec). The protein was detected as represented by the band shown.



ELISA: MMP17 Antibody