

Product datasheet for **TA590510**

ACP6 Rabbit Polyclonal Antibody

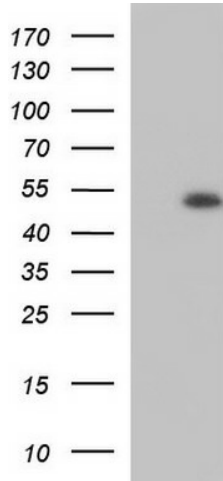
Product data:

Product Type:	Primary Antibodies
Applications:	ELISA, IHC, WB
Recommended Dilution:	WB 1:20000, IHC 1:150, ELISA 1:100-1:2000
Reactivity:	Human
Host:	Rabbit
Isotype:	IgG
Clonality:	Polyclonal
Immunogen:	DNA immunization. This antibody is specific for the Middle Region of the target protein.
Formulation:	20 mM Potassium Phosphate, 150 mM Sodium Chloride, pH 7.0
Concentration:	0.98102 mg/ml
Purification:	Purified from mouse ascites fluids or tissue culture supernatant by affinity chromatography (protein A/G)
Conjugation:	Unconjugated
Storage:	Store at -20°C as received.
Stability:	Stable for 12 months from date of receipt.
Gene Name:	acid phosphatase 6, lysophosphatidic
Database Link:	NP_057445 Entrez Gene 51205 Human Q9NPH0
Background:	ACP6 hydrolyzes lysophosphatidic acid to monoacylglycerol.
Synonyms:	ACPL1; LPAP; PACPL1
Note:	This antibody was generated by SDIX's Genomic Antibody Technology® (GAT). Learn about GAT
Protein Families:	Druggable Genome, Secreted Protein
Protein Pathways:	Riboflavin metabolism

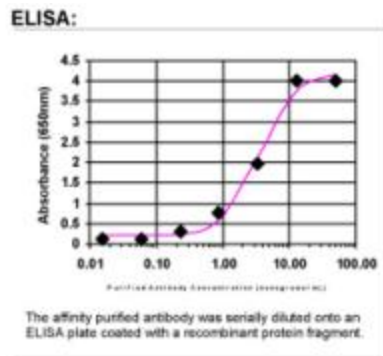


[View online »](#)

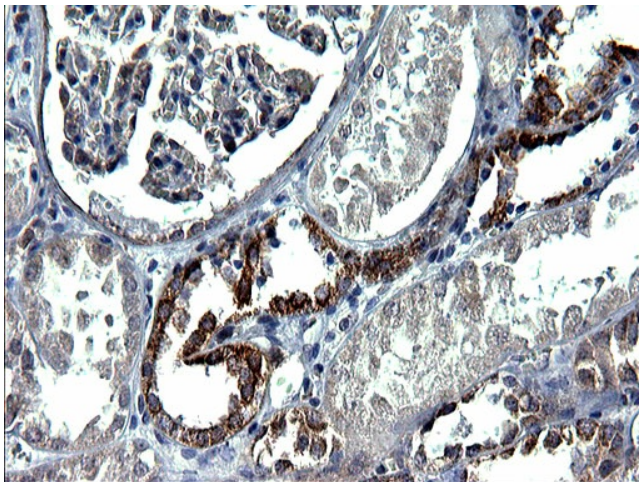
Product images:



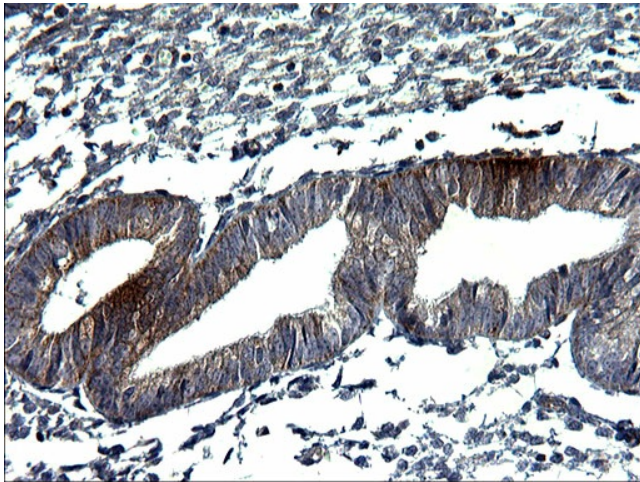
HEK293T cells were transfected with the pCMV6-ENTRY control (Cat# [PS100001], Left lane) or pCMV6-ENTRY ACP6 (Cat# [RC202269], Right lane) cDNA for 48 hrs and lysed. Equivalent amounts of cell lysates (5 ug per lane) were separated by SDS-PAGE and immunoblotted with anti-ACP6(Cat# TA590510). Positive lysates [LY414025] (100ug) and [LC414025] (20ug) can be purchased separately from OriGene.



ELISA: ACP6 Antibody



Immunohistochemical staining of paraffin-embedded Human Kidney tissue using anti-ACP6 rabbit polyclonal antibody. (TA590510)



Immunohistochemical staining of paraffin-embedded Human endometrium tissue using anti-ACP6 rabbit polyclonal antibody. (TA590510)