

## Product datasheet for **TA590508**

### SDF4 Rabbit Polyclonal Antibody

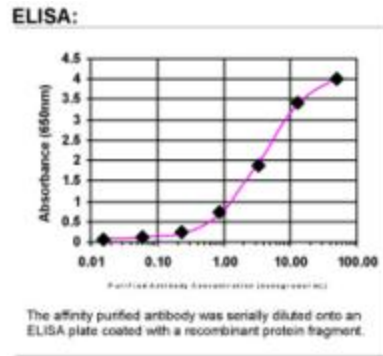
#### Product data:

Product Type:	Primary Antibodies
Applications:	ELISA, IF, IHC
Recommended Dilution:	ELISA: 1:100-1:2000; IHC: 1:10-1:2000; IHC-P 1:10-1:2000
Reactivity:	Human
Host:	Rabbit
Isotype:	IgG
Clonality:	Polyclonal
Immunogen:	DNA immunization. This antibody is specific for the C Terminus Region of the target protein.
Formulation:	20 mM Potassium Phosphate, 150 mM Sodium Chloride, pH 7.0
Concentration:	0.8mg/ml
Purification:	Purified from mouse ascites fluids or tissue culture supernatant by affinity chromatography (protein A/G)
Conjugation:	Unconjugated
Storage:	Store at -20°C as received.
Stability:	Stable for 12 months from date of receipt.
Gene Name:	stromal cell derived factor 4
Database Link:	<a href="#">NP_057631</a> <a href="#">Entrez Gene 51150 Human</a> <a href="#">Q9BRK5</a>
Background:	SDF4 may regulate calcium-dependent activities in the endoplasmic reticulum lumen or post-ER compartment (By similarity) Isoform 5 may be involved in the exocytosis of zymogens by pancreatic acini
Synonyms:	Cab45; SDF-4
Note:	This antibody was generated by SDIX's Genomic Antibody Technology® (GAT). <a href="#">Learn about GAT</a>
Protein Families:	Transmembrane

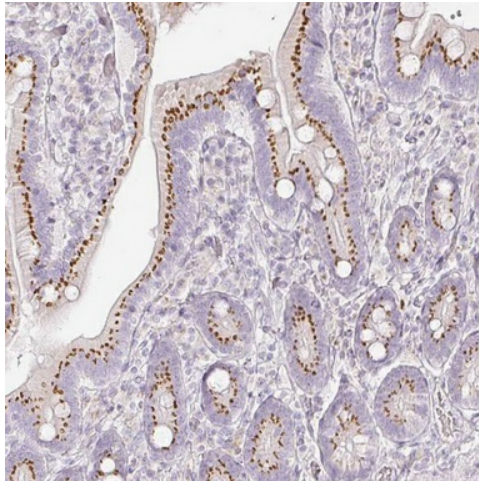


[View online »](#)

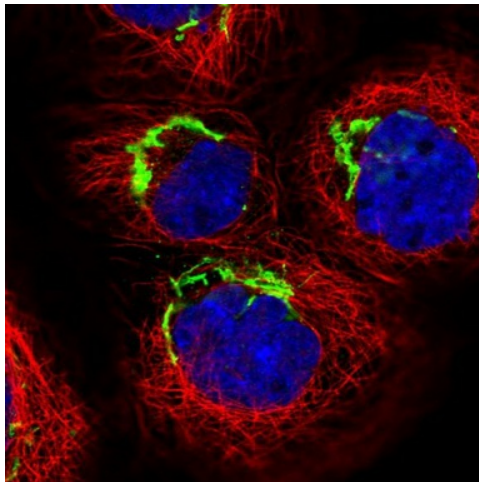
## Product images:



ELISA: SDF4 Antibody



Immunohistochemical staining of human duodenum shows strong positivity in glandular cells. Antibody dilution: 1:1500. Image and statement courtesy of the Human Protein Atlas (HPA).



Immunofluorescent staining of human cell line A-431 shows positivity in the Golgi apparatus. Antibody dilution: 1:125. Image and statement courtesy of the Human Protein Atlas (HPA).