

Product datasheet for **TA590502**

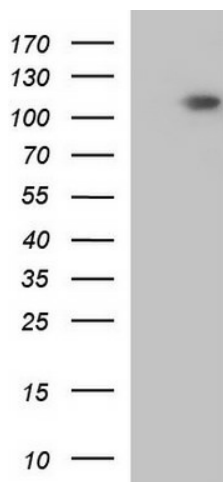
GRID1 Rabbit Polyclonal Antibody

Product data:

Product Type:	Primary Antibodies
Applications:	WB
Recommended Dilution:	WB 1:20000, ELISA 1:100-1:2000
Reactivity:	Human
Host:	Rabbit
Isotype:	IgG
Clonality:	Polyclonal
Immunogen:	DNA immunization. In vivo generated recombinant protein fragment
Formulation:	20 mM Potassium Phosphate, 150 mM Sodium Chloride, pH 7.0
Concentration:	1.20365 mg/ml
Purification:	Purified from mouse ascites fluids or tissue culture supernatant by affinity chromatography (protein A/G)
Conjugation:	Unconjugated
Storage:	Store at -20°C as received.
Stability:	Stable for 12 months from date of receipt.
Gene Name:	glutamate ionotropic receptor delta type subunit 1
Database Link:	NP_060021 Entrez Gene 2894 Human Q9ULK0
Background:	GRID1 is subunit of glutamate receptor channels. These channels mediate most of the fast excitatory synaptic transmission in the central nervous system and play key roles in synaptic plasticity (Yamazaki et al., 1992 [PubMed 1372507]). [supplied by OMIM]
Synonyms:	GluD1; GluD1-b
Note:	This antibody was generated by SDIX's Genomic Antibody Technology® (GAT). Learn about GAT
Protein Families:	Druggable Genome, Ion Channels: Glutamate Receptors, Transmembrane
Protein Pathways:	Neuroactive ligand-receptor interaction



[View online »](#)

Product images:

HEK293T cells were transfected with the pCMV6-ENTRY control (Cat# [PS100001], Left lane) or pCMV6-ENTRY GRID1 (Cat# [RC224397], Right lane) cDNA for 48 hrs and lysed. Equivalent amounts of cell lysates (5 ug per lane) were separated by SDS-PAGE and immunoblotted with anti-GRID1(Cat# TA590502). Positive lysates [LY413698] (100ug) and [LC413698] (20ug) can be purchased separately from OriGene.