

Product datasheet for **TA590501**

AMBRA1 Rabbit Polyclonal Antibody

Product data:

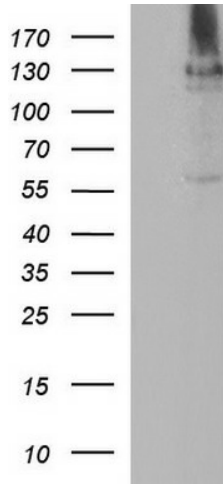
Product Type:	Primary Antibodies
Applications:	IF, IHC, IP, WB
Recommended Dilution:	WB 1:20000, IHC 1:150, IF 1:500, ELISA 1:100-1:2000
Reactivity:	Human
Host:	Rabbit
Isotype:	IgG
Clonality:	Polyclonal
Immunogen:	DNA immunization. This antibody was made against a protein fragment from the C Terminus Region of AMBRA1.
Formulation:	20 mM Potassium Phosphate, 150 mM Sodium Chloride, pH 7.0
Concentration:	1.05mg/ml
Purification:	Purified from mouse ascites fluids or tissue culture supernatant by affinity chromatography (protein A/G)
Conjugation:	Unconjugated
Storage:	Store at -20°C as received.
Stability:	Stable for 12 months from date of receipt.
Gene Name:	autophagy and beclin 1 regulator 1
Database Link:	NP_060219 Entrez Gene 55626 Human Q9C0C7
Background:	AMBRA1 regulates autophagy and development of the nervous system. It is a large, previously unknown protein bearing a WD40 domain at its amino terminus, regulates autophagy and has a crucial role in embryogenesis. AMBRA1 is a positive regulator of the Becn1-dependent programme of autophagy, as revealed by its overexpression and by RNA interference experiments invitro. Notably, AMBRA1 functional deficiency in mouse embryos leads to severe neural tube defects associated with autophagy impairment, accumulation of ubiquitinated proteins, unbalanced cell proliferation and excessive apoptotic cell death.
Synonyms:	DCAF3; WDR94



[View online »](#)

Note: This antibody was generated by SDIX's Genomic Antibody Technology® (GAT). [Learn about GAT](#)

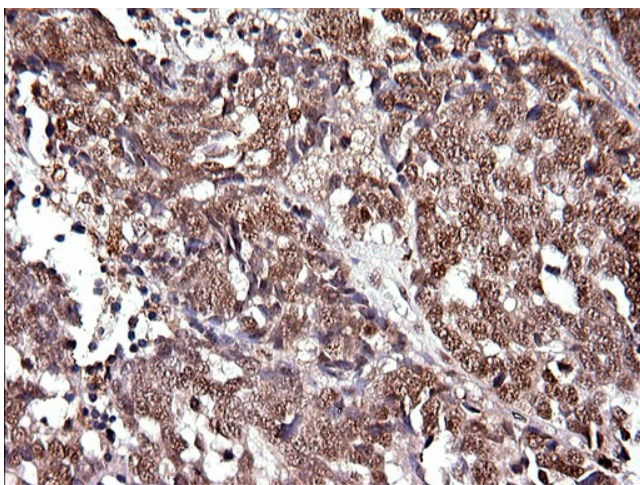
Product images:



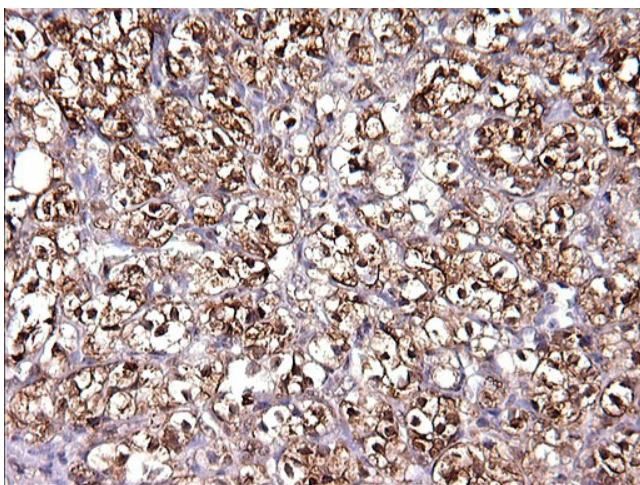
HEK293T cells were transfected with the pCMV6-ENTRY control (Cat# [PS100001], Left lane) or pCMV6-ENTRY AMBRA1 (Cat# [RC206255], Right lane) cDNA for 48 hrs and lysed. Equivalent amounts of cell lysates (5 ug per lane) were separated by SDS-PAGE and immunoblotted with anti-AMBRA1 (Cat# TA590501). Positive lysates [LY413575] (100ug) and [LC413575] (20ug) can be purchased separately from OriGene.



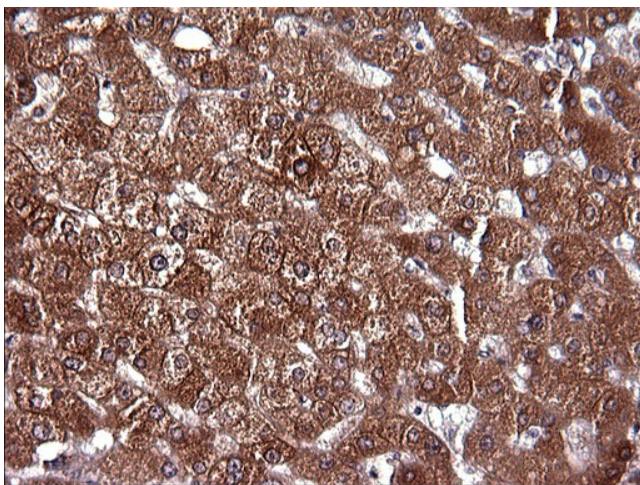
Western Blot: AMBRA1 Antibody - Western blot analysis of AMBRA1 on brain extracts using TA590501 showing a band at approximately 132kDa



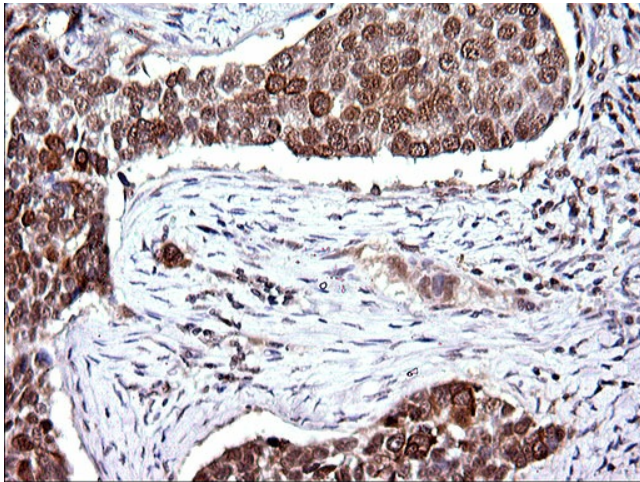
Immunohistochemical staining of paraffin-embedded Adenocarcinoma of Human colon tissue using anti-AMBRA1 rabbit polyclonal antibody. (TA590501)



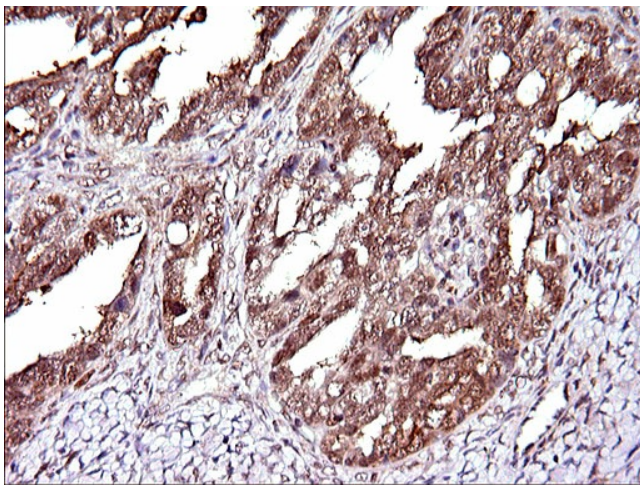
Immunohistochemical staining of paraffin-embedded Carcinoma of Human kidney tissue using anti-AMBRA1 rabbit polyclonal antibody. (TA590501)



Immunohistochemical staining of paraffin-embedded Human liver tissue using anti-AMBRA1 rabbit polyclonal antibody. (TA590501)



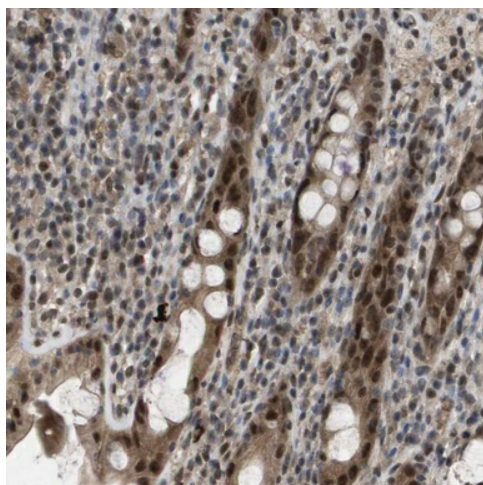
Immunohistochemical staining of paraffin-embedded Carcinoma of Human lung tissue using anti-AMBRA1 rabbit polyclonal antibody. (TA590501)



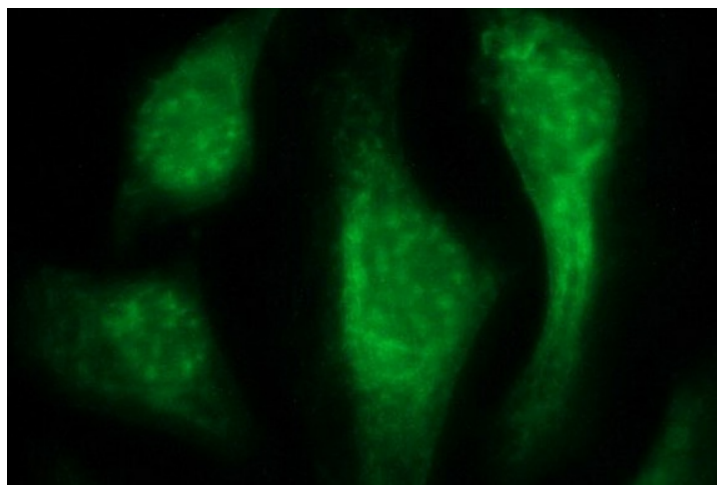
Immunohistochemical staining of paraffin-embedded Adenocarcinoma of Human ovary tissue using anti-AMBRA1 rabbit polyclonal antibody. (TA590501)



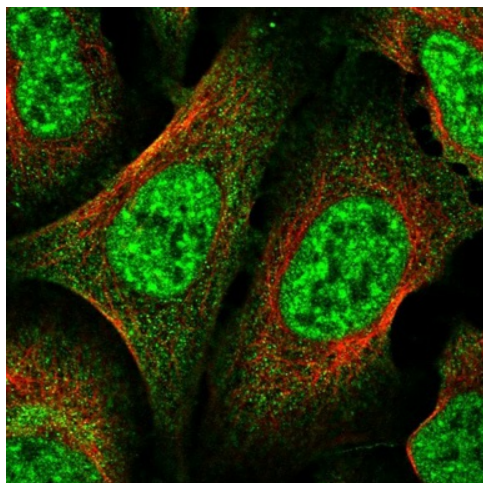
Immunohistochemistry: AMBRA1 Antibody - Immunohistochemical analysis of AMBRA1 on human cerebral cortex tissue



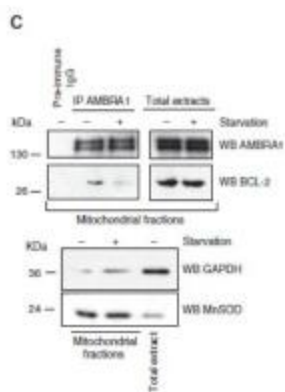
Immunohistochemical staining of human rectum shows strong nuclear positivity in glandular cells. This validation was performed by Protein Atlas and the presentation of data is for informational purposes only.



Immunofluorescent staining of HeLa cells using anti-AMBRA1 rabbit polyclonal antibody (TA590501).



Immunofluorescent staining of human cell line U-2 OS shows positivity in nucleus but not nucleoli & cytoplasm. This validation was performed by Protein Atlas and the presentation of data is for informational purposes only.



Immunoprecipitation: AMBRA1 Antibody - IP analysis of AMBRA1 in various cell lysates.