

## Product datasheet for **TA590498**

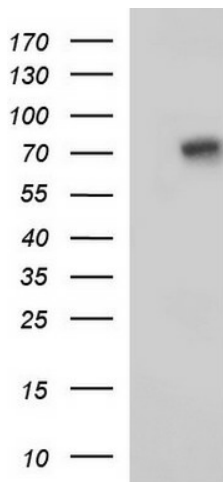
### EFHC1 Rabbit Polyclonal Antibody

#### Product data:

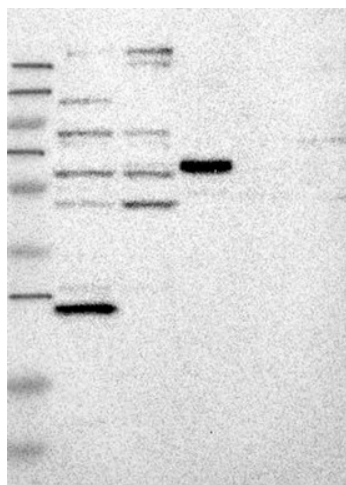
Product Type:	Primary Antibodies
Applications:	ELISA, IF, IHC, WB
Recommended Dilution:	WB 1:20000, ELISA 1:100-1:2000
Reactivity:	Human
Host:	Rabbit
Isotype:	IgG
Clonality:	Polyclonal
Immunogen:	DNA immunization. This antibody is specific for the C Terminus Region of the target protein.
Formulation:	20 mM Potassium Phosphate, 150 mM Sodium Chloride, pH 7.0
Concentration:	1.16715 mg/ml
Purification:	Purified from mouse ascites fluids or tissue culture supernatant by affinity chromatography (protein A/G)
Conjugation:	Unconjugated
Storage:	Store at -20°C as received.
Stability:	Stable for 12 months from date of receipt.
Gene Name:	EF-hand domain containing 1
Database Link:	<a href="#">NP_060570</a> <a href="#">Entrez Gene 114327 Human</a> <a href="#">Q5JVL4</a>
Background:	EFHC1 may enhance calcium influx through CACNA1E and stimulate programmed cell death.
Synonyms:	dJ304B14.2; EJM1
Note:	This antibody was generated by SDIX's Genomic Antibody Technology® (GAT). <a href="#">Learn about GAT</a>



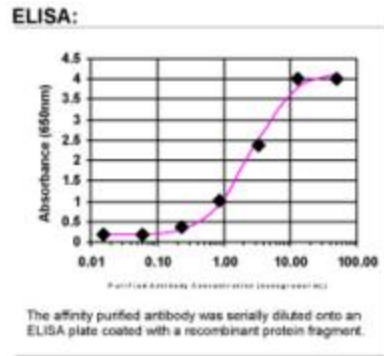
[View online »](#)

**Product images:**


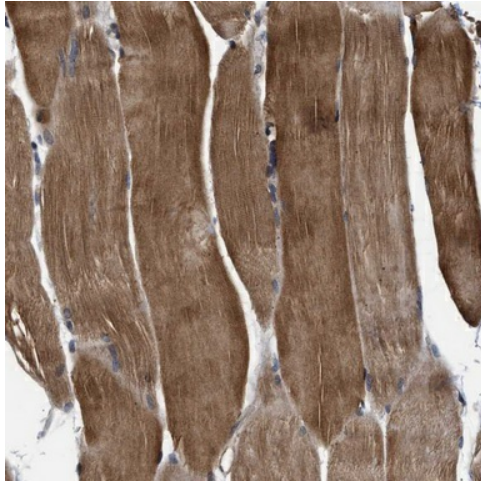
HEK293T cells were transfected with the pCMV6-ENTRY control (Cat# [PS100001], Left lane) or pCMV6-ENTRY EFHC1 (Cat# [RC205830], Right lane) cDNA for 48 hrs and lysed. Equivalent amounts of cell lysates (5 ug per lane) were separated by SDS-PAGE and immunoblotted with anti-EFHC1 (Cat# TA590498). Positive lysates [LY413316] (100ug) and [LC413316] (20ug) can be purchased separately from OriGene.



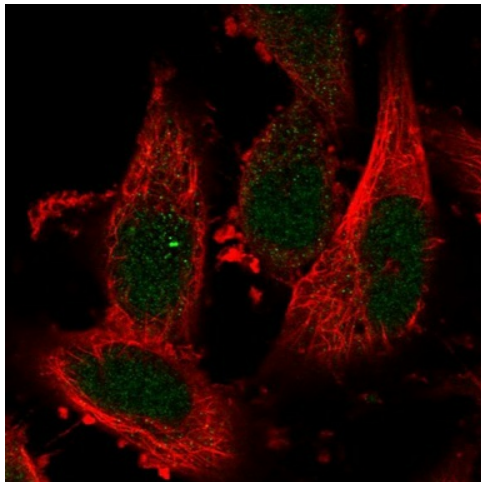
Lane 1: Marker [kDa] 250, 130, 95, 72, 55, 36, 28, 17, 11; Lane 2: RT-4; Lane 3: U-251 MG; Lane 4: Human Plasma; Lane 5: Liver; Lane 6: Tonsil This validation was performed by Protein Atlas and the presentation of data is for informational purposes only.



ELISA: EFHC1 Antibody



Immunohistochemical staining of human skeletal muscle shows cytoplasmic positivity in myocytes. This validation was performed by Protein Atlas and the presentation of data is for informational purposes only.



Immunofluorescent staining of human cell line U-251 MG shows positivity in nucleus. This validation was performed by Protein Atlas and the presentation of data is for informational purposes only.