

Product datasheet for **TA590494**

NAD Synthetase (NADSYN1) Rabbit Polyclonal Antibody

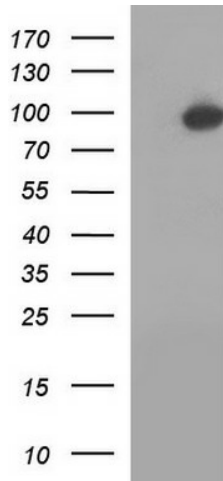
Product data:

| | |
|-----------------------|--|
| Product Type: | Primary Antibodies |
| Applications: | ELISA, IF, IHC, WB |
| Recommended Dilution: | WB 1:5000~20000, ELISA 1:100-1:2000 |
| Reactivity: | Human |
| Host: | Rabbit |
| Isotype: | IgG |
| Clonality: | Polyclonal |
| Immunogen: | DNA immunization. This antibody is specific for the Middle Region of the target protein. |
| Formulation: | 20 mM Potassium Phosphate, 150 mM Sodium Chloride, pH 7.0 |
| Concentration: | 0.75mg/ml |
| Purification: | Purified from mouse ascites fluids or tissue culture supernatant by affinity chromatography (protein A/G) |
| Conjugation: | Unconjugated |
| Storage: | Store at -20°C as received. |
| Stability: | Stable for 12 months from date of receipt. |
| Gene Name: | NAD synthetase 1 |
| Database Link: | NP_060631 Entrez Gene 55191 Human Q6IA69 |
| Background: | Nicotinamide adenine dinucleotide (NAD) is a coenzyme in metabolic redox reactions, a precursor for several cell signaling molecules, and a substrate for protein posttranslational modifications. NAD synthetase (EC 6.3.5.1) catalyzes the final step in the biosynthesis of NAD from nicotinic acid adenine dinucleotide (NaAD). [supplied by OMIM] |
| Synonyms: | FLJ10631; FLJ36703; FLJ40627 |
| Note: | This antibody was generated by SDIX's Genomic Antibody Technology® (GAT). Learn about GAT |
| Protein Pathways: | Metabolic pathways, Nicotinate and nicotinamide metabolism |

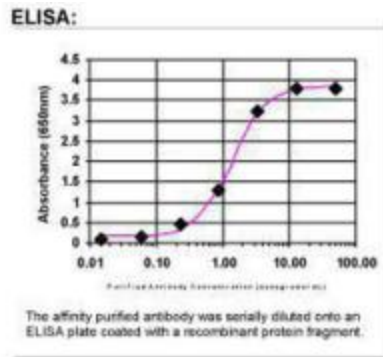


[View online »](#)

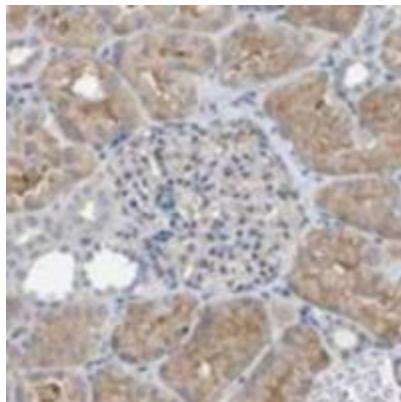
Product images:



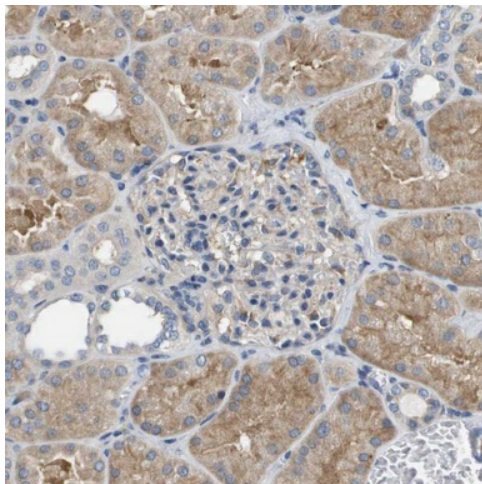
HEK293T cells were transfected with the pCMV6-ENTRY control (Left lane) or pCMV6-ENTRY NADSYN1 ([RC200131], Right lane) cDNA for 48 hrs and lysed. Equivalent amounts of cell lysates (5 ug per lane) were separated by SDS-PAGE and immunoblotted with anti-NADS. Positive lysates [LY413259] (100ug) and [LC413259] (20ug) can be purchased separately from OriGene.



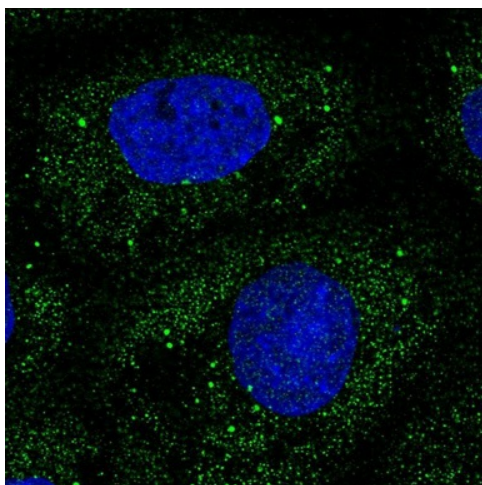
ELISA: NAD Synthetase Antibody



Immunohistochemistry: NAD Synthetase Antibody - Most of the normal tissues displayed weak to moderate cytoplasmic positivity. Neuronal cells in the CNS showed moderate nuclear membrane staining. Squamous epithelia, breast and prostate glands were mainly negative. A few cases of gliomas, melanomas and urothelial cancers exhibited weak to moderate cytoplasmic immunoreactivity. The remaining tumors were basically negative. Image and statement courtesy of the Human Protein Atlas (HPA).



Immunohistochemical staining of human kidney shows moderate cytoplasmic positivity in proximal tubules. This validation was performed by Protein Atlas and the presentation of data is for informational purposes only.



Immunofluorescent staining of human cell line A-431 shows positivity in cytoplasm. This validation was performed by Protein Atlas and the presentation of data is for informational purposes only.