

Product datasheet for **TA590493**

CKAP2 Rabbit Polyclonal Antibody

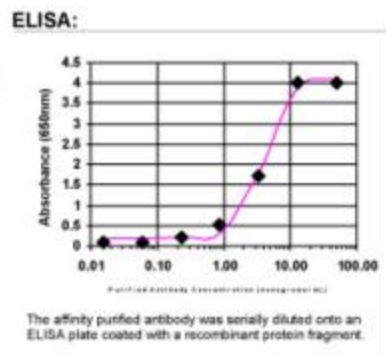
Product data:

Product Type:	Primary Antibodies
Applications:	ELISA
Recommended Dilution:	WB: 1:5000-1:20000; ELISA: 1:100-1:2000
Reactivity:	Human
Host:	Rabbit
Isotype:	IgG
Clonality:	Polyclonal
Immunogen:	DNA immunization. This antibody is specific for the Middle Region of the target protein.
Formulation:	20 mM Potassium Phosphate, 150 mM Sodium Chloride, pH 7.0
Concentration:	1.12336 mg/ml
Purification:	Purified from mouse ascites fluids or tissue culture supernatant by affinity chromatography (protein A/G)
Conjugation:	Unconjugated
Storage:	Store at -20°C as received.
Stability:	Stable for 12 months from date of receipt.
Gene Name:	cytoskeleton associated protein 2
Database Link:	NP_060674 Entrez Gene 26586 Human Q8WWK9
Background:	CKAP2 is a cytoskeleton-associated protein involved in mitotic progression (Seki and Fang, 2007 [PubMed 17376772]). [supplied by OMIM]
Synonyms:	LB1; se20-10; TMAP
Note:	This antibody was generated by SDIX's Genomic Antibody Technology® (GAT). Learn about GAT
Protein Families:	Druggable Genome



[View online »](#)

Product images:



ELISA: CKAP2 Antibody