

Product datasheet for **TA590490**

ENAH Rabbit Polyclonal Antibody

Product data:

Product Type:	Primary Antibodies
Applications:	ELISA, WB
Recommended Dilution:	WB 1:20000, ELISA 1:100-1:2000
Reactivity:	Human
Host:	Rabbit
Isotype:	IgG
Clonality:	Polyclonal
Immunogen:	DNA immunization. This antibody is specific for the Middle Region of the target protein.
Formulation:	20 mM Potassium Phosphate, 150 mM Sodium Chloride, pH 7.0
Concentration:	1.00146 mg/ml
Purification:	Purified from mouse ascites fluids or tissue culture supernatant by affinity chromatography (protein A/G)
Conjugation:	Unconjugated
Storage:	Store at -20°C as received.
Stability:	Stable for 12 months from date of receipt.
Gene Name:	ENAH actin regulator
Database Link:	NP_060682 Entrez Gene 55740 Human Q8N8S7
Background:	ENAH/MENA belongs to the Ena/vasodilator-stimulated phosphoprotein (VASP) family of proteins which play a role in regulating the actin cytoskeleton for the control of cell shape and movement. The Ena/VASP family of actin binding proteins includes ENAH/MENA which is the human homolog of drosophila Ena (enabled), VASP, and EVL (Ena/vasodilator-stimulated phosphoprotein-like protein). Ena/VASP proteins contain an EVH1 domain, a central proline-rich domain, and a terminal EVH2 domain. ENAH/MENA is not expressed in normal breast but has been detected and associated with breast lesions with a high risk of transformation and primary and metastatic breast cancer.
Synonyms:	ENA; MENA; NDPP1

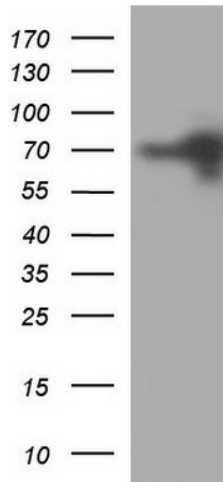


[View online »](#)

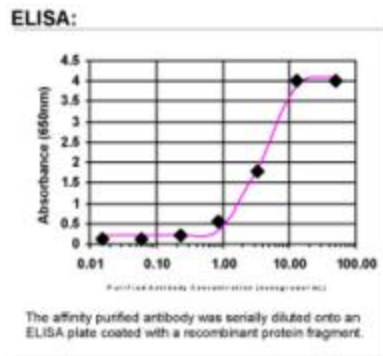
Note: This antibody was generated by SDIX's Genomic Antibody Technology® (GAT). [Learn about GAT](#)

Protein Pathways: Regulation of actin cytoskeleton

Product images:



HEK293T cells were transfected with the pCMV6-ENTRY control (Cat# [PS100001], Left lane) or pCMV6-ENTRY ENAH (Cat# [RC215455], Right lane) cDNA for 48 hrs and lysed. Equivalent amounts of cell lysates (5 ug per lane) were separated by SDS-PAGE and immunoblotted with anti-ENAH(Cat# TA590490).



ELISA: MENA Antibody