

## Product datasheet for **TA590485**

### PCDHB15 Rabbit Polyclonal Antibody

#### Product data:

Product Type:	Primary Antibodies
Applications:	ELISA, IHC, WB
Recommended Dilution:	WB 1:20000, ELISA 1:100-1:2000
Reactivity:	Human
Host:	Rabbit
Isotype:	IgG
Clonality:	Polyclonal
Immunogen:	DNA immunization. This antibody is specific for the Middle Region of the target protein.
Formulation:	20 mM Potassium Phosphate, 150 mM Sodium Chloride, pH 7.0
Concentration:	1.03139 mg/ml
Purification:	Purified from mouse ascites fluids or tissue culture supernatant by affinity chromatography (protein A/G)
Conjugation:	Unconjugated
Storage:	Store at -20°C as received.
Stability:	Stable for 12 months from date of receipt.
Gene Name:	protocadherin beta 15
Database Link:	<a href="#">NP_061758</a> <a href="#">Entrez Gene 56121 Human</a> <a href="#">Q9Y5E8</a>



[View online »](#)

**Background:**

This gene is a member of the protocadherin beta gene cluster, one of three related gene clusters tandemly linked on chromosome five. The gene clusters demonstrate an unusual genomic organization similar to that of B-cell and T-cell receptor gene clusters. The beta cluster contains 16 genes and 3 pseudogenes, each encoding 6 extracellular cadherin domains and a cytoplasmic tail that deviates from others in the cadherin superfamily. The extracellular domains interact in a homophilic manner to specify differential cell-cell connections. Unlike the alpha and gamma clusters, the transcripts from these genes are made up of only one large exon, not sharing common 3' exons as expected. These neural cadherin-like cell adhesion proteins are integral plasma membrane proteins. Their specific functions are unknown but they most likely play a critical role in the establishment and function of specific cell-cell neural connections.

**Synonyms:**

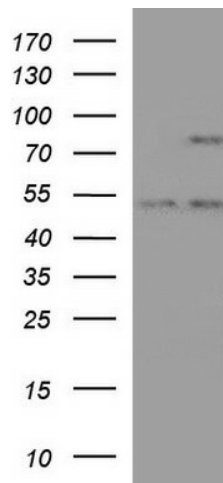
PCDH-BETA15

**Note:**

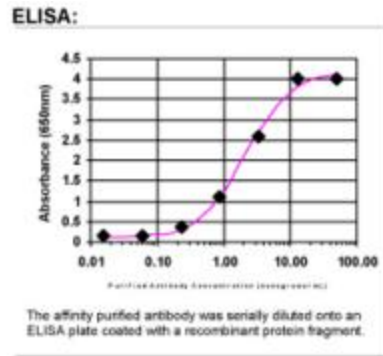
This antibody was generated by SDIX's Genomic Antibody Technology ® (GAT). [Learn about GAT](#)

**Protein Families:**

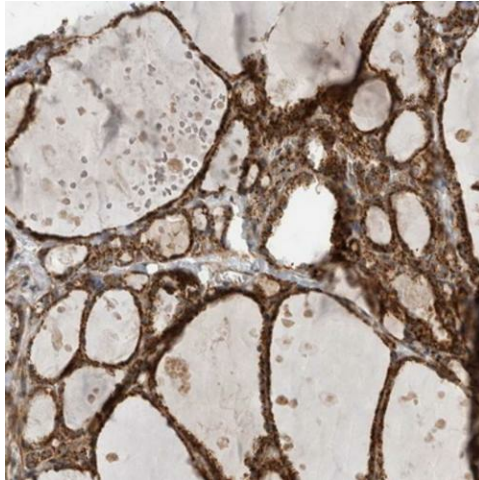
Transmembrane

**Product images:**


HEK293T cells were transfected with the pCMV6-ENTRY control (Cat# [PS100001], Left lane) or pCMV6-ENTRY PCDHB15 (Cat# [RC207719], Right lane) cDNA for 48 hrs and lysed. Equivalent amounts of cell lysates (5 ug per lane) were separated by SDS-PAGE and immunoblotted with anti-PCDH(Cat# TA590485). Positive lysates [LY412947] (100ug) and [LC412947] (20ug) can be purchased separately from OriGene.



ELISA: PCDHB15 Antibody



Immunohistochemical staining of human thyroid gland shows strong cytoplasmic positivity in glandular cells. This validation was performed by Protein Atlas and the presentation of data is for informational purposes only. Heat-induced epitope retrieval by EDTA solution buffer pH 8.0 at 120°C for 3 min.