

## Product datasheet for **TA590481**

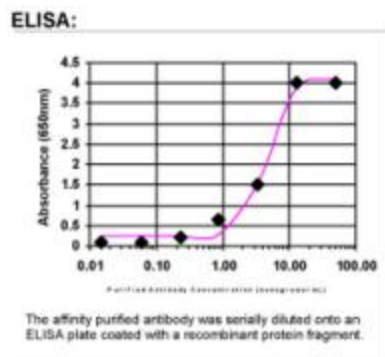
### PEPP2 (PLEKHA5) Rabbit Polyclonal Antibody

#### Product data:

Product Type:	Primary Antibodies
Applications:	ELISA
Recommended Dilution:	ELISA: 1:100-1:2000
Reactivity:	Human
Host:	Rabbit
Isotype:	IgG
Clonality:	Polyclonal
Immunogen:	DNA immunization. This antibody is specific for the N Terminus Region of the target protein.
Formulation:	20 mM Potassium Phosphate, 150 mM Sodium Chloride, pH 7.0
Concentration:	1.2219 mg/ml
Purification:	Purified from mouse ascites fluids or tissue culture supernatant by affinity chromatography (protein A/G)
Conjugation:	Unconjugated
Storage:	Store at -20°C as received.
Stability:	Stable for 12 months from date of receipt.
Gene Name:	pleckstrin homology domain containing A5
Database Link:	<a href="#">NP_061885</a> <a href="#">Entrez Gene 54477 Human</a> <a href="#">Q9HAU0</a>
Background:	PEPP2 is a member of the homeobox PEPP subfamily. PEPP2 is highly expressed in heart and kidney, and also in reproductive tissues; the human homolog is specifically expressed in testis.
Synonyms:	PEPP-2; PEPP2
Note:	This antibody was generated by SDIX's Genomic Antibody Technology ® (GAT). <a href="#">Learn about GAT</a>


[View online »](#)

## Product images:



ELISA: PEPP2 Antibody