

Product datasheet for **TA590476**

IKB alpha (NFKBIA) Rabbit Polyclonal Antibody

Product data:

Product Type:	Primary Antibodies
Applications:	ELISA
Recommended Dilution:	WB: 1:5000-1:20000; ELISA: 1:100-1:2000
Reactivity:	Human
Host:	Rabbit
Isotype:	IgG
Clonality:	Polyclonal
Immunogen:	DNA immunization. This antibody is specific for the N Terminus Region of the target protein.
Formulation:	20 mM Potassium Phosphate, 150 mM Sodium Chloride, pH 7.0
Concentration:	1.15036 mg/ml
Purification:	Purified from mouse ascites fluids or tissue culture supernatant by affinity chromatography (protein A/G)
Conjugation:	Unconjugated
Storage:	Store at -20°C as received.
Stability:	Stable for 12 months from date of receipt.
Gene Name:	NFKB inhibitor alpha
Database Link:	NP_065390 Entrez Gene 4792 Human P25963



[View online »](#)

Background:

Immunoglobulins belong to a group of related glyco proteins which make up 20% of serum proteins. Antigens and immunoglobulins react to confer immunity to individuals. Immunoglobulins have similar structures of two identical heavy chains and two identical light chains. Both the heavy chains and the light chains are divided into constant and variable regions. The constant regions have the same amino acid sequences between all the immunoglobulin classes. The variable regions have approximately 110 amino acids with high sequence variability. The amino acid sequence of the heavy chain determines the class of an immunoglobulin. The five types of immunoglobulin heavy chains are known as: IgG, IgA, IgM, IgD, and IgE. IgG is divided into four subclasses, and IgA is divided into two subclasses. In serum IgA and IgG are monomers with a single 4 polypeptide unit; while, IgM is a pentamer. IgA may also form polymers. Kappa light chain antibody can be used for the identification of leukemias, plasmacytomas and certain non Hodgkin's lymphomas. Kappa light chain contains one immunoglobulin like domain. The EU sequence has the INV allotypic marker, Ala 45 and Val 83. The ROY sequence has the INV allotypic marker, Ala 45 and Leu 83.

Synonyms:

IKBA; MAD-3; NFKBI

Note:

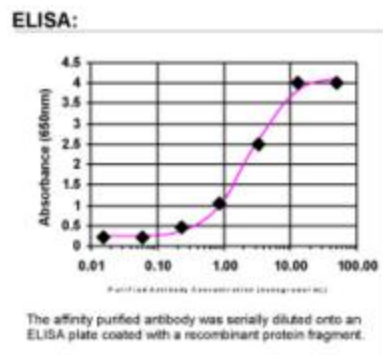
This antibody was generated by SDIX's Genomic Antibody Technology® (GAT). [Learn about GAT](#)

Protein Families:

Druggable Genome

Protein Pathways:

Adipocytokine signaling pathway, Apoptosis, B cell receptor signaling pathway, Chemokine signaling pathway, Chronic myeloid leukemia, Cytosolic DNA-sensing pathway, Epithelial cell signaling in Helicobacter pylori infection, Neurotrophin signaling pathway, NOD-like receptor signaling pathway, Pathways in cancer, Prostate cancer, RIG-I-like receptor signaling pathway, Small cell lung cancer, T cell receptor signaling pathway, Toll-like receptor signaling pathway

Product images:

ELISA: IKB alpha Antibody