

Product datasheet for **TA590472**

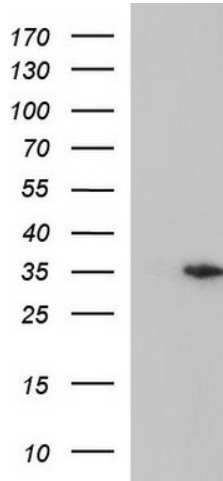
TLX3 Rabbit Polyclonal Antibody

Product data:

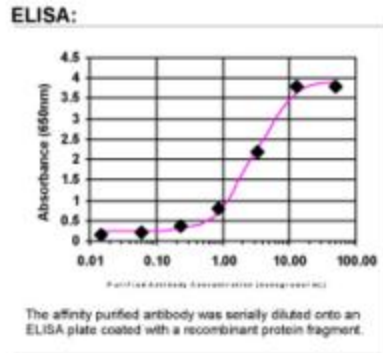
| | |
|-----------------------|--|
| Product Type: | Primary Antibodies |
| Applications: | ELISA, IHC, WB |
| Recommended Dilution: | WB 1:20000, IHC 1:150,ELISA 1:100-1:2000 |
| Reactivity: | Human |
| Host: | Rabbit |
| Isotype: | IgG |
| Clonality: | Polyclonal |
| Immunogen: | DNA immunization. This antibody is specific for the N Terminus Region of the target protein. |
| Formulation: | 20 mM Potassium Phosphate, 150 mM Sodium Chloride, pH 7.0 |
| Concentration: | 1.06mg/ml |
| Purification: | Purified from mouse ascites fluids or tissue culture supernatant by affinity chromatography (protein A/G) |
| Conjugation: | Unconjugated |
| Storage: | Store at -20°C as received. |
| Stability: | Stable for 12 months from date of receipt. |
| Gene Name: | T cell leukemia homeobox 3 |
| Database Link: | NP_066305 Entrez Gene 30012 Human O43711 |
| Background: | RNX (HOX11L2, TLX3) belongs to a family of orphan homeobox genes that encode DNA-binding nuclear transcription factors. Members of the HOX11 gene family are characterized by a threonine-47 replacing cytosine in the highly conserved homeodomain (Dear et al., 1993 [PubMed 8099440]). [supplied by OMIM] |
| Synonyms: | HOX11L2; RNX |
| Note: | This antibody was generated by SDIX's Genomic Antibody Technology® (GAT). Learn about GAT |
| Protein Families: | Transcription Factors |



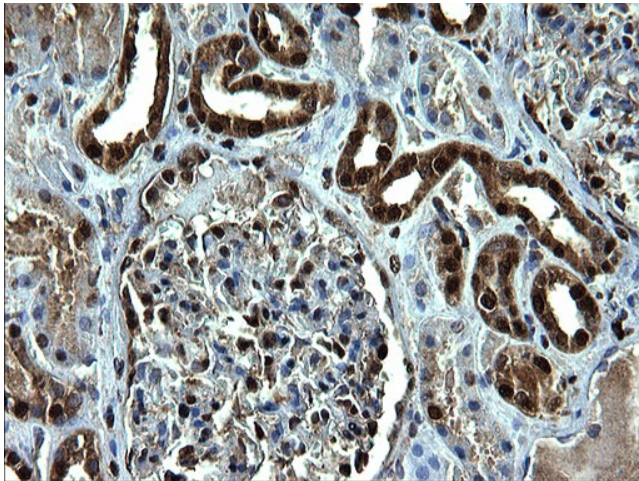
[View online »](#)

Product images:


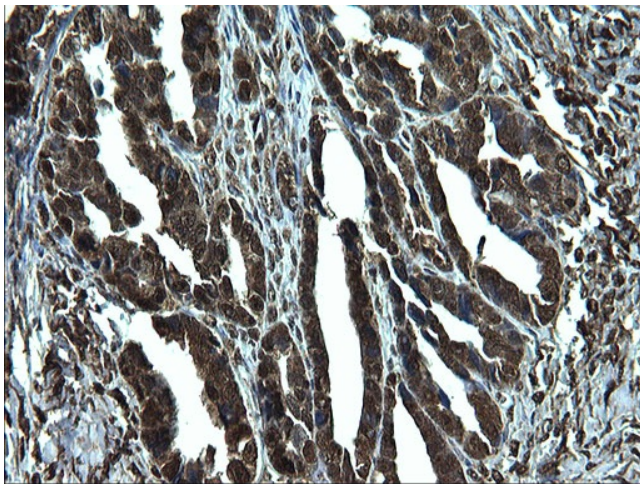
HEK293T cells were transfected with the pCMV6-ENTRY control (Cat# [PS100001], Left lane) or pCMV6-ENTRY TLX3 (Cat# [RC205739], Right lane) cDNA for 48 hrs and lysed. Equivalent amounts of cell lysates (5 ug per lane) were separated by SDS-PAGE and immunoblotted with anti-TLX3(Cat# TA590472). Positive lysates [LY412148] (100ug) and [LC412148] (20ug) can be purchased separately from OriGene.



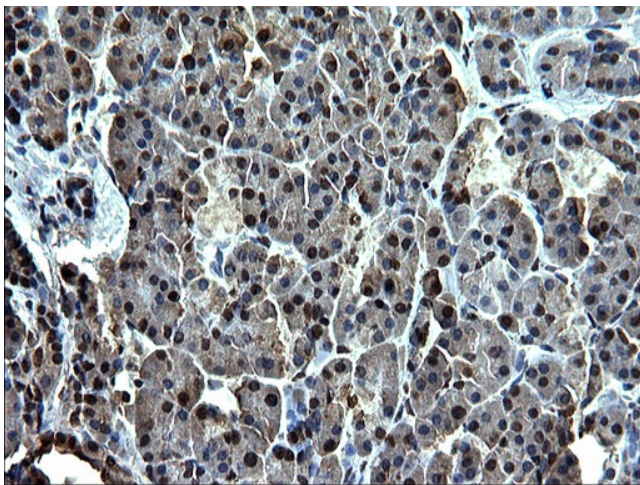
ELISA: TLX3 Antibody



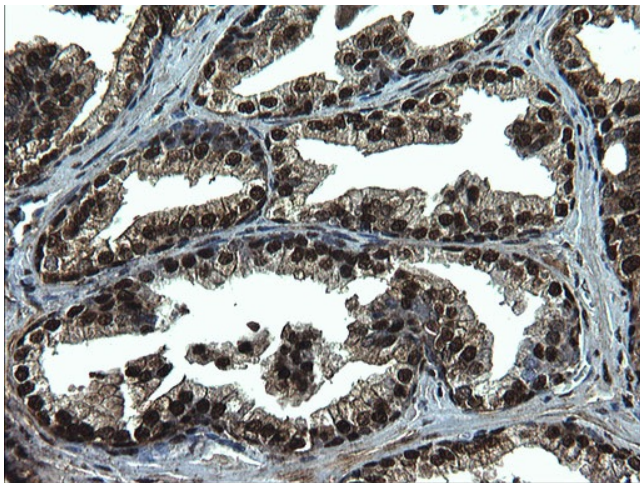
Immunohistochemical staining of paraffin-embedded Human Kidney tissue using anti-TLX3 Rabbit Polyclonal antibody. (TA590472)



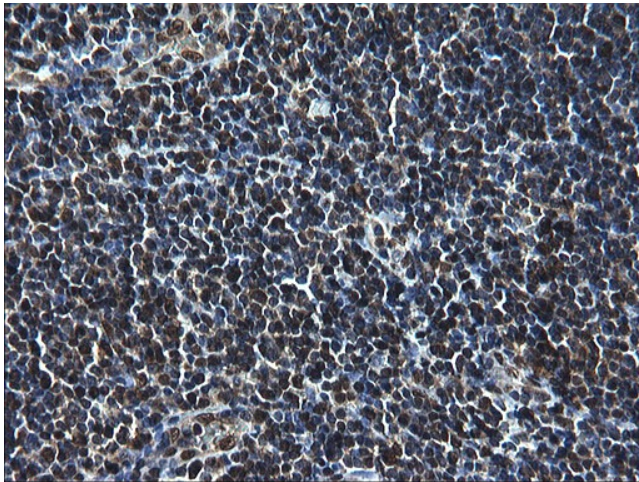
Immunohistochemical staining of paraffin-embedded Adenocarcinoma of Human ovary tissue using anti-TLX3 Rabbit Polyclonal antibody. (TA590472)



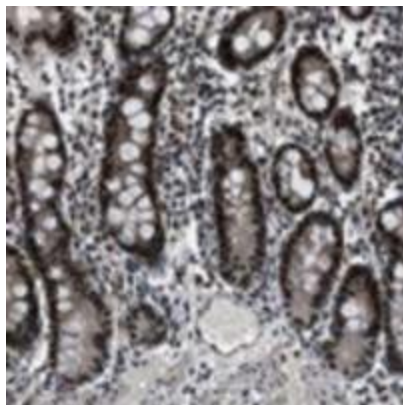
Immunohistochemical staining of paraffin-embedded Human pancreas tissue using anti-TLX3 Rabbit Polyclonal antibody. (TA590472)



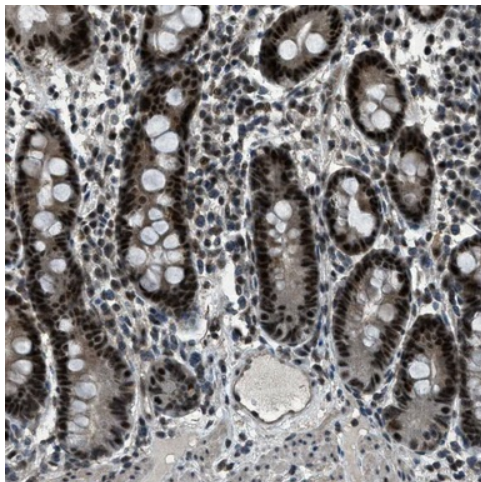
Immunohistochemical staining of paraffin-embedded Human prostate tissue using anti-TLX3 Rabbit Polyclonal antibody. (TA590472)



Immunohistochemical staining of paraffin-embedded Human lymph node tissue using anti-TLX3 Rabbit Polyclonal antibody. (TA590472)



Immunohistochemistry: TLX3 Antibody - Normal and malignant tissues showed moderate to strong nuclear cytoplasmic staining. Gastro-intestinal glandular cells, urothelial cells, cells of seminiferous duct and tonsil exhibited strong nuclear and cytoplasmic staining. Placenta and exocrine pancreas displayed strong nuclear staining. Malignancies displayed in most cases similar staining as the corresponding normal tissue. Image and statement courtesy of the Human Protein Atlas (HPA).



Immunohistochemical staining of human duodenum shows strong nuclear positivity in glandular cells. This validation was performed by Protein Atlas and the presentation of data is for informational purposes only.