

Product datasheet for **TA590471**

MST1 Rabbit Polyclonal Antibody

Product data:

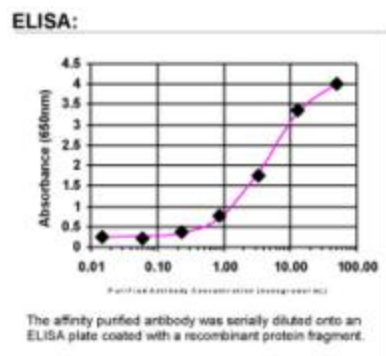
Product Type:	Primary Antibodies
Applications:	ELISA
Recommended Dilution:	WB: 1:5000-1:20000; ELISA: 1:100-1:2000; IHC: 1:10-1:2000; IHC-P 1:250-1:2000; IP 1:10-1:500
Reactivity:	Human
Host:	Rabbit
Isotype:	IgG
Clonality:	Polyclonal
Immunogen:	DNA immunization. This antibody is specific for the Middle Region of the target protein.
Formulation:	20 mM Potassium Phosphate, 150 mM Sodium Chloride, pH 7.0
Concentration:	1.08mg/ml
Purification:	Purified from mouse ascites fluids or tissue culture supernatant by affinity chromatography (protein A/G)
Conjugation:	Unconjugated
Storage:	Store at -20°C as received.
Stability:	Stable for 12 months from date of receipt.
Gene Name:	macrophage stimulating 1
Database Link:	NP_066278 Entrez Gene 4485 Human P26927
Background:	Mammalian STE20-like kinase 1, or MST-1, is a serine/threonine kinase that, upon cleavage, has been implicated in the promotion of chromatin condensation. MST-1 is also known as KRS2 and STK4. The C-terminus of MST-1 contains two functional NESs (nuclear export signals), which are released upon caspase-mediated cleavage. The N-terminus portion of the protein then translocates to the nucleus and will promote chromatin condensation at sufficiently high levels. Full-length MST-1 is localized to the cytoplasm.
Synonyms:	D3F15S2; DNF15S2; HGFL; MSP; NF15S2
Note:	This antibody was generated by SDIX's Genomic Antibody Technology® (GAT). Learn about GAT



[View online »](#)

Protein Families: Druggable Genome

Product images:



ELISA: MST1 Antibody - Affinity Purified