

Product datasheet for **TA590469**

Ku80 (XRCC5) Rabbit Polyclonal Antibody

Product data:

Product Type:	Primary Antibodies
Applications:	ELISA, IHC, WB
Recommended Dilution:	WB 1:5000~20000, IHC 1:150, ELISA 1:100-1:2000
Reactivity:	Human, Dog, Monkey, Mouse
Host:	Rabbit
Isotype:	IgG
Clonality:	Polyclonal
Immunogen:	DNA immunization. This antibody is specific for the C Terminus Region of the target protein.
Formulation:	20 mM Potassium Phosphate, 150 mM Sodium Chloride, pH 7.0
Concentration:	1.01mg/ml
Purification:	Purified from mouse ascites fluids or tissue culture supernatant by affinity chromatography (protein A/G)
Conjugation:	Unconjugated
Storage:	Store at -20°C as received.
Stability:	Stable for 12 months from date of receipt.
Gene Name:	X-ray repair cross complementing 5
Database Link:	NP_066964 Entrez Gene 22596 Mouse Entrez Gene 478902 Dog Entrez Gene 574279 Monkey Entrez Gene 7520 Human P13010
Background:	Originally identified as an autoantigen, the Ku protein are nuclear proteins found in eukaryotes. They exist as a heterodimer consisting of Ku 70 and Ku 80, migrating at approximately 70 and 80 kDa respectively. They bind to DNA ends at double strand breaks. The Ku proteins interact with the DNA-dependent protein kinase (DNA-PK) and participate in the targeting of DNA-PK to DNA. The Ku proteins may participate in numerous cellular processes, including DNA repair and replication, cell signalling, cell proliferation, transcriptional activation and apoptosis.
Synonyms:	KARP-1; KARP1; KU80; Ku86; KUB2; NFIV



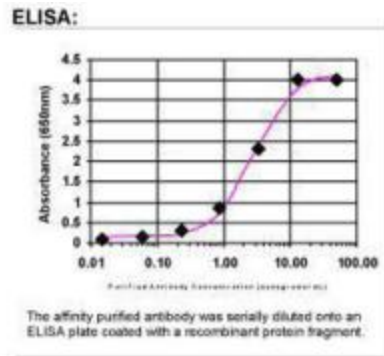
[View online »](#)

Note: This antibody was generated by SDIX's Genomic Antibody Technology® (GAT). [Learn about GAT](#)

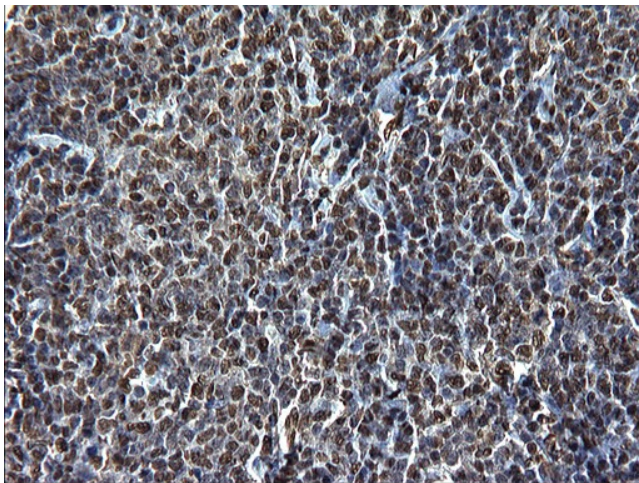
Protein Families: Druggable Genome, Stem cell - Pluripotency

Protein Pathways: Non-homologous end-joining

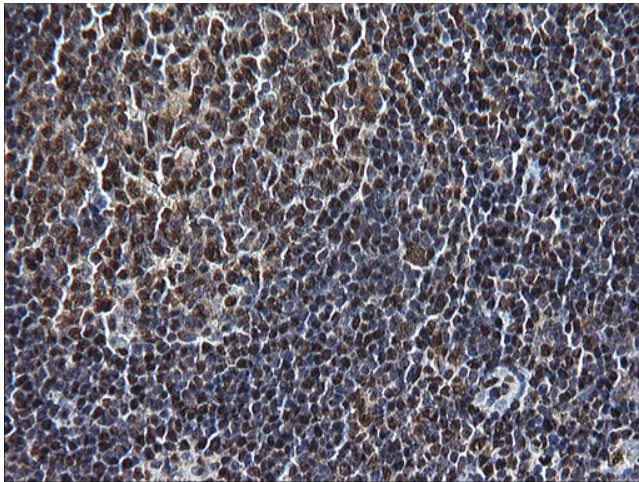
Product images:



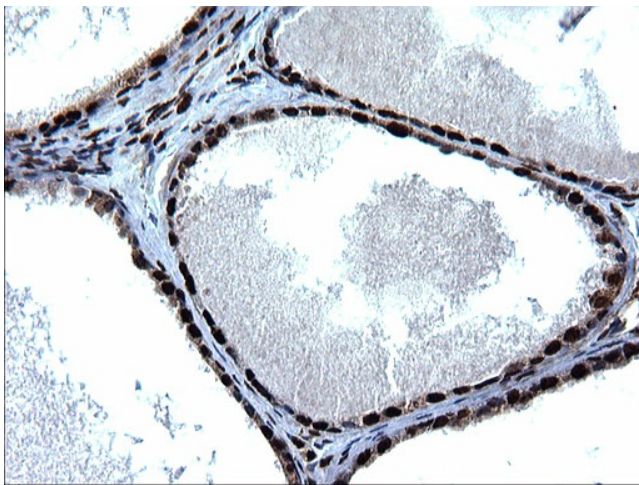
ELISA: Ku80 Antibody



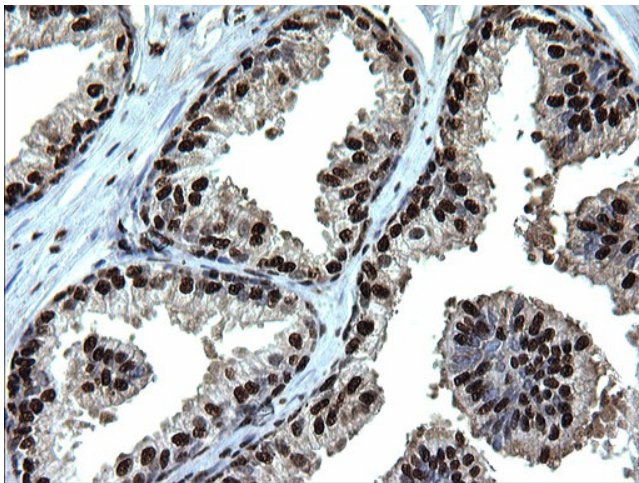
Immunohistochemical staining of paraffin-embedded Human Lymphoma tissue using anti-XRCC5 rabbit polyclonal antibody. (TA590469)



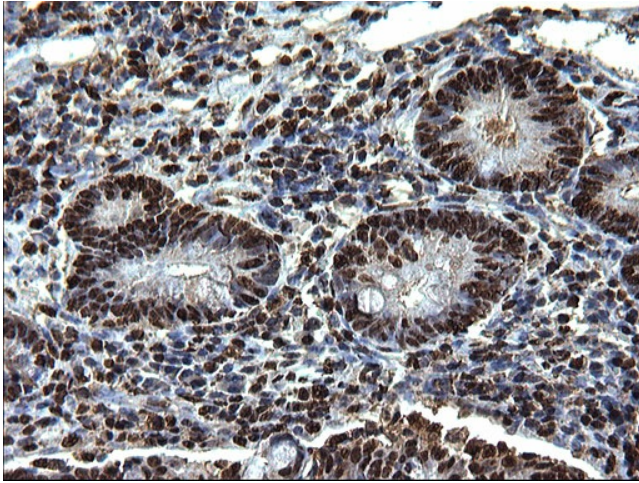
Immunohistochemical staining of paraffin-embedded Human lymph node tissue using anti-XRCC5 rabbit polyclonal antibody. (TA590469)



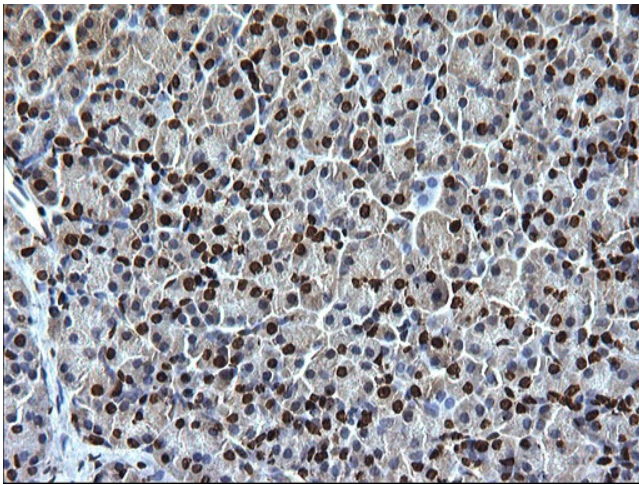
Immunohistochemical staining of paraffin-embedded Carcinoma of Human prostate tissue using anti-XRCC5 rabbit polyclonal antibody. (TA590469)



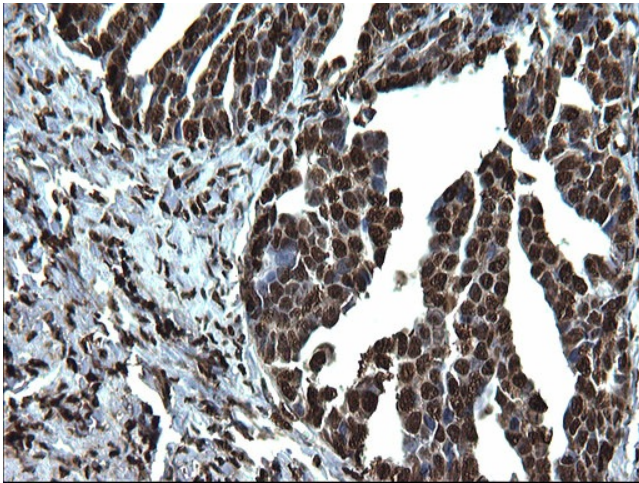
Immunohistochemical staining of paraffin-embedded Human prostate tissue using anti-XRCC5 rabbit polyclonal antibody. (TA590469)



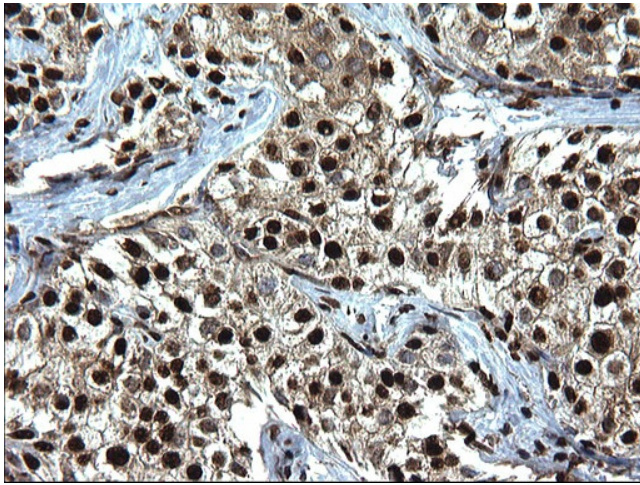
Immunohistochemical staining of paraffin-embedded Carcinoma of Human pancreas tissue using anti-XRCC5 rabbit polyclonal antibody. (TA590469)



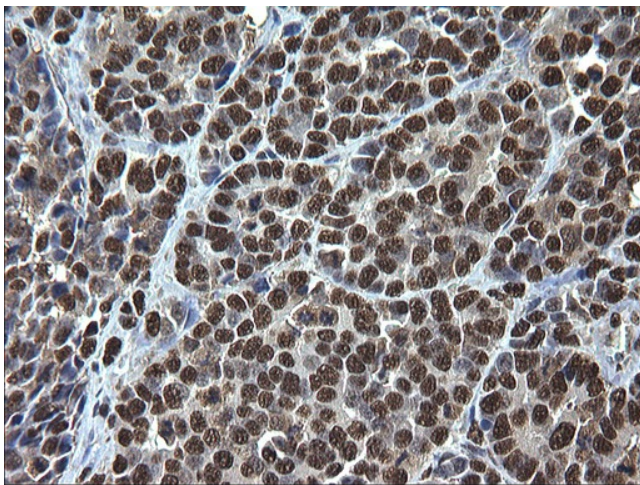
Immunohistochemical staining of paraffin-embedded Human pancreas tissue using anti-XRCC5 rabbit polyclonal antibody. (TA590469)



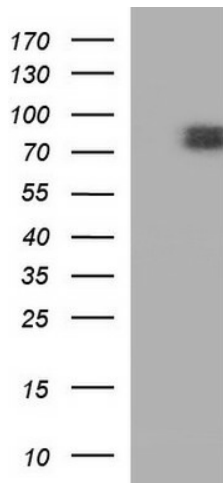
Immunohistochemical staining of paraffin-embedded Adenocarcinoma of Human ovary tissue using anti-XRCC5 rabbit polyclonal antibody. (TA590469)



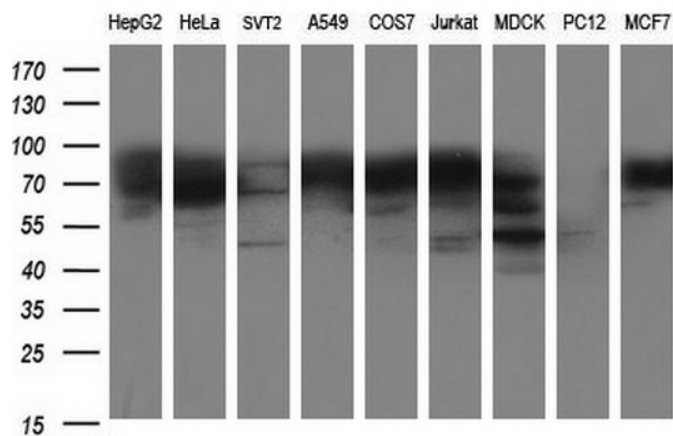
Immunohistochemical staining of paraffin-embedded Carcinoma of Human liver tissue using anti-XRCC5 rabbit polyclonal antibody. (TA590469)



Immunohistochemical staining of paraffin-embedded Adenocarcinoma of Human colon tissue using anti-XRCC5 rabbit polyclonal antibody. (TA590469)



HEK293T cells were transfected with the pCMV6-ENTRY control (Cat# [PS100001], Left lane) or pCMV6-ENTRY XRCC5 (Cat# [RC210649], Right lane) cDNA for 48 hrs and lysed. Equivalent amounts of cell lysates (5 ug per lane) were separated by SDS-PAGE and immunoblotted with anti-XRCC5(Cat# TA590469). Positive lysates [LY412062] (100ug) and [LC412062] (20ug) can be purchased separately from OriGene.



Western blot analysis of extracts (35ug) from 9 different cell lines by using anti-XRCC5 polyclonal antibody (HepG2: human; HeLa: human; SVT2: mouse; A549: human; COS7: monkey; Jurkat: human; MDCK: canine; PC12: rat; MCF7: human).