

Product datasheet for **TA590466**

ELOVL5 Rabbit Polyclonal Antibody

Product data:

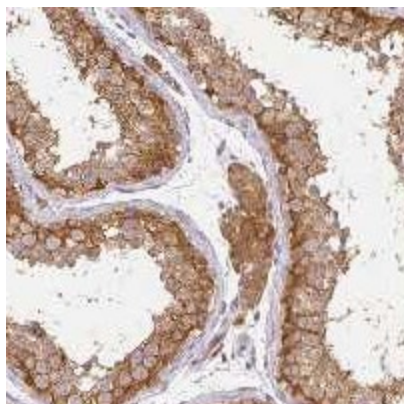
Product Type:	Primary Antibodies
Applications:	IF, IHC, WB
Recommended Dilution:	WB: 1:5000-1:20000; ELISA: 1:100-1:2000; IHC: 1:10-1:2000; IHC-P 1:10-1:2000
Reactivity:	Human
Host:	Rabbit
Isotype:	IgG
Clonality:	Polyclonal
Immunogen:	DNA immunization. This antibody is specific for the C Terminus Region of the target protein.
Formulation:	20 mM Potassium Phosphate, 150 mM Sodium Chloride, pH 7.0
Concentration:	1.17mg/ml
Purification:	Purified from mouse ascites fluids or tissue culture supernatant by affinity chromatography (protein A/G)
Conjugation:	Unconjugated
Storage:	Store at -20°C as received.
Stability:	Stable for 12 months from date of receipt.
Gene Name:	ELOVL fatty acid elongase 5
Database Link:	NP_068586 Entrez Gene 60481 Human Q9NYP7
Background:	ELOVL5 plays a role in elongation of long-chain polyunsaturated fatty acids (Leonard et al., 2000)
Synonyms:	dj483K16.1; HELO1; SCA38
Note:	This antibody was generated by SDIX's Genomic Antibody Technology® (GAT). Learn about GAT
Protein Families:	Transmembrane
Protein Pathways:	Biosynthesis of unsaturated fatty acids



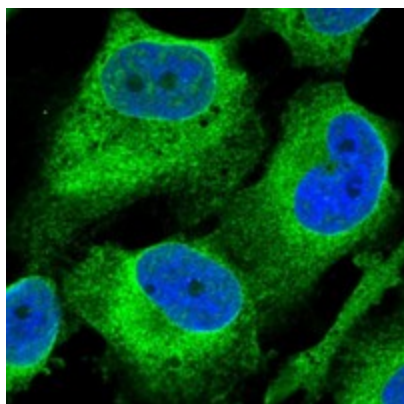
[View online »](#)

Product images:

Western Blot: ELOVL5 Antibody - Samples: Lane 1, Marker: 250, 130, 95, 72, 55, 36, 28, 17, 11 Lane 2, RT-4 Lane 3, U-251MG sp Lane 4, Human Plasma Lane 5, Liver Lane 6, Tonsil, Target weight: 35, 10 (splice variants) Validation score: 2 Validation description: Supportive - Band of predicted size in kDa (+/-20%) with additional bands present.



Immunohistochemical staining of human testis shows moderate cytoplasmic positivity in cells in seminiferous ducts and Leydig cells. Antibody dilution: 1:1000. Image and statement courtesy of the Human Protein Atlas (HPA).



Immunofluorescent staining of human cell line U-251 MG shows positivity in endoplasmic reticulum. Antibody dilution: 1:25. Image and statement courtesy of the Human Protein Atlas (HPA).