

Product datasheet for **TA590465**

FANCE Rabbit Polyclonal Antibody

Product data:

Product Type:	Primary Antibodies
Applications:	ELISA, WB
Recommended Dilution:	WB: 0.5-1.5 ug/ml; ELISA: 1:100-1:2000; IHC: 1:10-1:2000; IHC-P 1:10-1:2000
Reactivity:	Human
Host:	Rabbit
Isotype:	IgG
Clonality:	Polyclonal
Immunogen:	DNA immunization. This antibody is specific for the Middle Region of the target protein.
Formulation:	20 mM Potassium Phosphate, 150 mM Sodium Chloride, pH 7.0
Concentration:	1.1mg/ml
Purification:	Purified from mouse ascites fluids or tissue culture supernatant by affinity chromatography (protein A/G)
Conjugation:	Unconjugated
Storage:	Store at -20°C as received.
Stability:	Stable for 12 months from date of receipt.
Gene Name:	FA complementation group E
Database Link:	NP_068741 Entrez Gene 2178 Human Q9HB96
Background:	The Fanconi anemia complementation group (FANC) currently includes FANCA, FANCB, FANCC, FANCD1 (also called BRCA2), FANCD2, FANCE, FANCF, FANCG, FANCI, FANCJ (also called BRIP1), FANCL, FANCM and FANCN (also called PALB2). The previously defined group FANCH is the same as FANCA. Fanconi anemia is a genetically heterogeneous recessive disorder characterized by cytogenetic instability, hypersensitivity to DNA crosslinking agents, increased chromosomal breakage, and defective DNA repair. The members of the Fanconi anemia complementation group do not share sequence similarity; they are related by their assembly into a common nuclear protein complex. This gene encodes the protein for complementation group E. [provided by RefSeq]



[View online »](#)

Synonyms: FACE; FAE

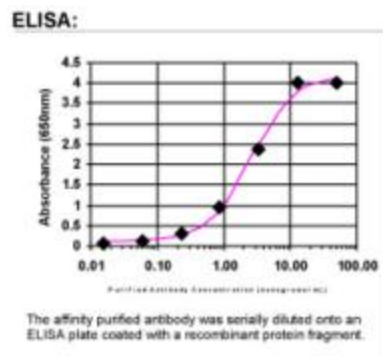
Note: This antibody was generated by SDIX's Genomic Antibody Technology® (GAT). [Learn about GAT](#)

Protein Families: Druggable Genome

Product images:



Western Blot: FANCE Antibody - Western Blot was performed using affinity purified SEQer FANCE antibody, aa (153-252) antibody. The lanes contain 5-30ug of a whole cell extract. Final concentration of antibodies = 0.1ug/ml (1:10,000 dilution). The blot was probed overnight with the SEQer FANCE antibody, aa (153-252) antibody. Blot was then washed according to protocol and probed with goat-anti-Rabbit-HRP conjugate at 1:5000 dilution, washed and developed using chemiluminescence (film exposure 5-30sec). The protein was detected as represented by the band shown.



ELISA: FANCE Antibody