

## Product datasheet for **TA590463**

### Placental lactogen (CSH1) Rabbit Polyclonal Antibody

#### Product data:

Product Type:	Primary Antibodies
Applications:	ELISA, IF, IHC, WB
Recommended Dilution:	WB 1:20000, IHC 1:150, ELISA 1:100-1:2000
Reactivity:	Human
Host:	Rabbit
Isotype:	IgG
Clonality:	Polyclonal
Immunogen:	DNA immunization. This antibody is specific for the N Terminus Region of the target protein.
Formulation:	20 mM Potassium Phosphate, 150 mM Sodium Chloride, pH 7.0
Concentration:	1.14599 mg/ml
Purification:	Purified from mouse ascites fluids or tissue culture supernatant by affinity chromatography (protein A/G)
Conjugation:	Unconjugated
Storage:	Store at -20°C as received.
Stability:	Stable for 12 months from date of receipt.
Gene Name:	chorionic somatomammotropin hormone 1
Database Link:	<a href="#">NP_072166</a> <a href="#">Entrez Gene 1442 Human</a> <a href="#">P01243</a>

**Background:** Placental lactogen is a member of the somatotropin/prolactin family of hormones and plays an important role in growth control. The gene is located at the growth hormone locus on chromosome 17 along with four other related genes in the same transcriptional orientation; an arrangement which is thought to have evolved by a series of gene duplications. Although the five genes share a remarkably high degree of sequence identity, they are expressed selectively in different tissues. Alternative splicing generates additional isoforms of each of the five growth hormones, leading to further diversity and potential for specialization. This particular family member is expressed mainly in the placenta and utilizes multiple transcription initiation sites.



[View online »](#)

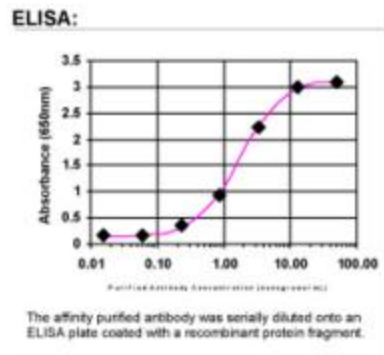
**Synonyms:** CSA; CSH2; CSMT; FLJ75407; PL

**Note:** This antibody was generated by SDIX's Genomic Antibody Technology® (GAT). [Learn about GAT](#)

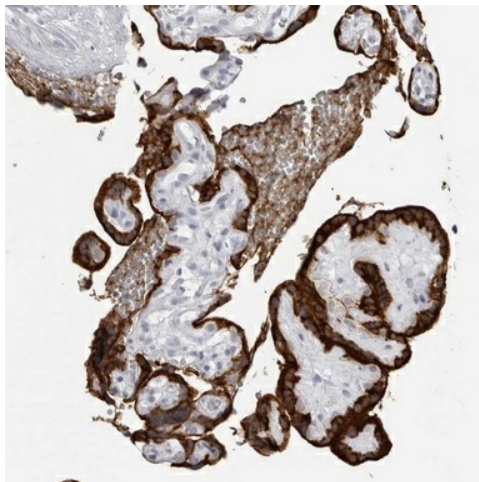
**Protein Families:** Druggable Genome

**Protein Pathways:** Jak-STAT signaling pathway, Neuroactive ligand-receptor interaction

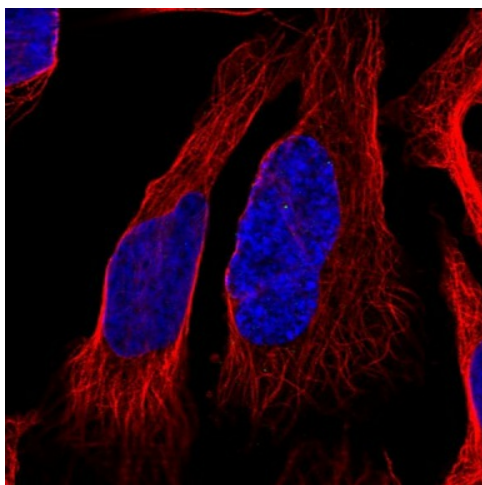
**Product images:**



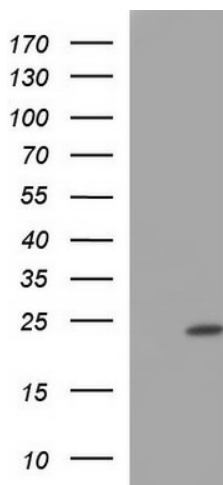
ELISA: PLACENTAL LACTOGEN Antibody



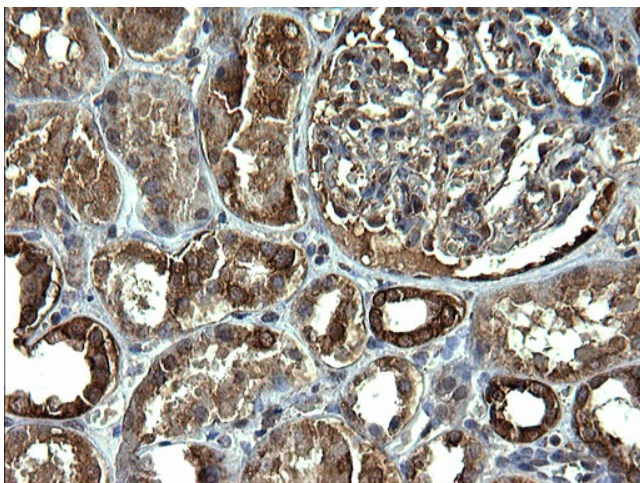
Immunohistochemical staining of human placenta shows strong cytoplasmic positivity in trophoblastic cells. This validation was performed by Protein Atlas and the presentation of data is for informational purposes only.



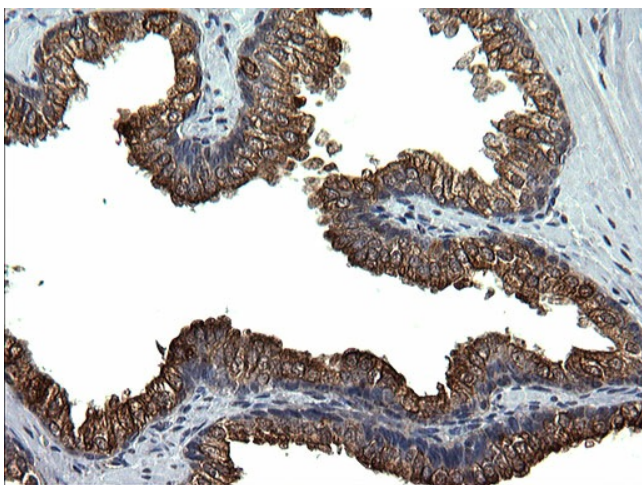
Immunofluorescent staining of human cell line U-2 OS shows no positivity. This validation was performed by Protein Atlas and the presentation of data is for informational purposes only.



HEK293T cells were transfected with the pCMV6-ENTRY control (Left lane) or pCMV6-ENTRY CSH1 ([RC223244], Right lane) cDNA for 48 hrs and lysed. Equivalent amounts of cell lysates (5 ug per lane) were separated by SDS-PAGE and immunoblotted with anti-CSH1. Positive lysates [LY411615] (100ug) and [LC411615] (20ug) can be purchased separately from OriGene.



Immunohistochemical staining of paraffin-embedded Human Kidney tissue using anti-CSH1 rabbit polyclonal antibody. (TA590463)



Immunohistochemical staining of paraffin-embedded Human prostate tissue using anti-CSH1 rabbit polyclonal antibody. (TA590463)