

Product datasheet for **TA590462**

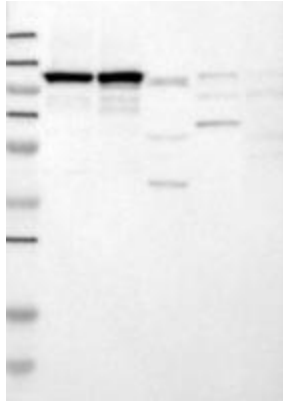
RBM15 Rabbit Polyclonal Antibody

Product data:

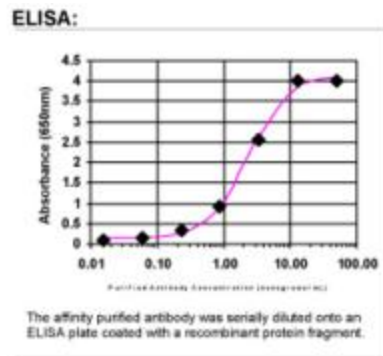
Product Type:	Primary Antibodies
Applications:	ELISA, IHC, WB
Recommended Dilution:	WB: 1:5000-1:20000; ELISA: 1:100-1:2000
Reactivity:	Human
Host:	Rabbit
Isotype:	IgG
Clonality:	Polyclonal
Immunogen:	DNA immunization. This antibody is specific for the Middle Region of the target protein.
Formulation:	20 mM Potassium Phosphate, 150 mM Sodium Chloride, pH 7.0
Concentration:	1.1mg/ml
Purification:	Purified from mouse ascites fluids or tissue culture supernatant by affinity chromatography (protein A/G)
Conjugation:	Unconjugated
Storage:	Store at -20°C as received.
Stability:	Stable for 12 months from date of receipt.
Gene Name:	RNA binding motif protein 15
Database Link:	NP_073605 Entrez Gene 64783 Human Q96T37
Background:	Members of the SPEN (Split-end) family of proteins, including RBM15, have repressor function in several signaling pathways and may bind to RNA through interaction with spliceosome components (Hiriart et al., 2005 [PubMed 16129689]). [supplied by OMIM]
Synonyms:	OTT; OTT1; SPEN
Note:	This antibody was generated by SDIX's Genomic Antibody Technology® (GAT). Learn about GAT
Protein Families:	Transcription Factors



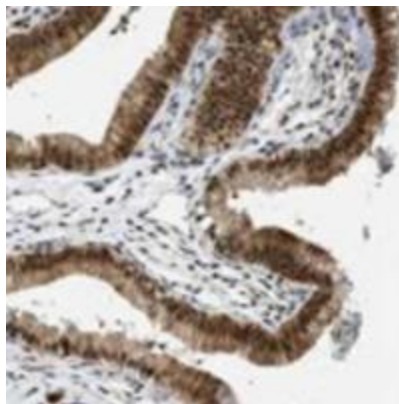
[View online »](#)

Product images:


Western Blot: RBM15 Antibody - Samples: Lane 1: Marker: 250, 130, 95, 72, 55, 36, 28, 17, 11 / Lane 2: RT-4 / Lane 3: U-251MG sp / Lane 4: Human Plasma / Lane 5: Liver / Lane 6: Tonsil; Target weight: 107, 106, 3 (splice variants)



ELISA: RBM15 Antibody - Affinity Purified



Immunohistochemistry: RBM15 Antibody - A majority of normal and malignant tissues showed moderate to strong nuclear and moderate cytoplasmic staining. In normal tissues, strongest positivity was found in gastro-intestinal glandular cells and in neuronal cells of the CNS. Prostate, bile duct cells and ovarian stromal cells were negative. Malignant tissues stained similarly, with strongest immunoreactivity found in colo-rectal cancers and malignant gliomas. Other tumors generally displayed moderate nuclear and cytoplasmic staining. Most prostate cancers were negative. Image and statement courtesy of the Human Protein Atlas (HPA).