

Product datasheet for **TA590461**

CDC25C Rabbit Polyclonal Antibody

Product data:

Product Type:	Primary Antibodies
Applications:	ELISA
Recommended Dilution:	ELISA: 1:100-1:2000
Reactivity:	Human
Host:	Rabbit
Isotype:	IgG
Clonality:	Polyclonal
Immunogen:	DNA immunization. This antibody is specific for the Middle Region of the target protein.
Formulation:	20 mM Potassium Phosphate, 150 mM Sodium Chloride, pH 7.0
Concentration:	0.85985 mg/ml
Purification:	Purified from mouse ascites fluids or tissue culture supernatant by affinity chromatography (protein A/G)
Conjugation:	Unconjugated
Storage:	Store at -20°C as received.
Stability:	Stable for 12 months from date of receipt.
Gene Name:	cell division cycle 25C
Database Link:	NP_073720 Entrez Gene 995 Human P30307
Background:	Cdc25C is a tyrosine protein phosphatase required for progression of the cell cycle. Cdc25C activates cell cycle-specific cyclin-dependent kinases (CDKs), including cdc2, via dephosphorylation events (1,2). Cdc25C is activated via phosphorylation at Ser216 (3). In response to DNA damage and DNA replicational stress, Chk1 and Chk2 phosphorylate Cdc25C to prevent entry into mitosis (4,5).
Synonyms:	CDC25; PPP1R60
Note:	This antibody was generated by SDIX's Genomic Antibody Technology® (GAT). Learn about GAT

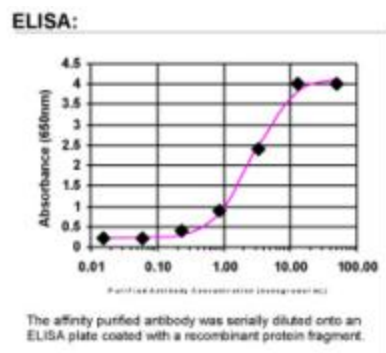


[View online »](#)

Protein Families: Druggable Genome, Phosphatase, Stem cell - Pluripotency

Protein Pathways: Cell cycle, Oocyte meiosis, Progesterone-mediated oocyte maturation

Product images:



ELISA: Cdc25C Antibody