

Product datasheet for **TA590455**

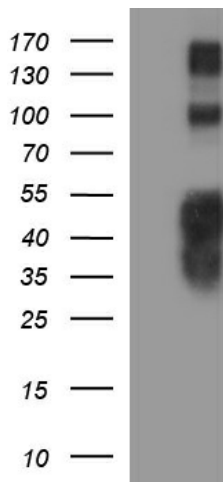
TNIP2 Rabbit Polyclonal Antibody

Product data:

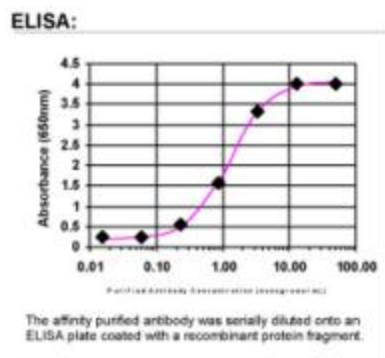
Product Type:	Primary Antibodies
Applications:	ELISA, IF, IHC, WB
Recommended Dilution:	WB 1:20000, ELISA 1:100-1:2000
Reactivity:	Human
Host:	Rabbit
Isotype:	IgG
Clonality:	Polyclonal
Immunogen:	DNA immunization. This antibody is specific for the C Terminus Region of the target protein.
Formulation:	20 mM Potassium Phosphate, 150 mM Sodium Chloride, pH 7.0
Concentration:	0.94818 mg/ml
Purification:	Purified from mouse ascites fluids or tissue culture supernatant by affinity chromatography (protein A/G)
Conjugation:	Unconjugated
Storage:	Store at -20°C as received.
Stability:	Stable for 12 months from date of receipt.
Gene Name:	TNFAIP3 interacting protein 2
Database Link:	NP_077285 Entrez Gene 79155 Human Q8NFZ5
Background:	ABIN-2, TNFAIP3 interacting protein 2, binds to the COOH-terminal zinc finger domain of A20. NF-kB activation induced by TNF and interleukin-1 is inhibited by overexpression of ABIN-2. The latter also inhibits NF-kB activation induced by overexpression of receptor-interacting protein or TNF receptor-associated factor 2. A-20 binding Inhibitor of Nuclear Factor-kappaB (NF-kB)Activation (ABIN-2) binds to A-20. ABIN-2 interferes with NF-kB activation upstream of the IKK complex and might contribute to NF-kB inhibitory function of A-20.
Synonyms:	ABIN2; FLIP1; KLIP
Note:	This antibody was generated by SDIX's Genomic Antibody Technology® (GAT). Learn about GAT



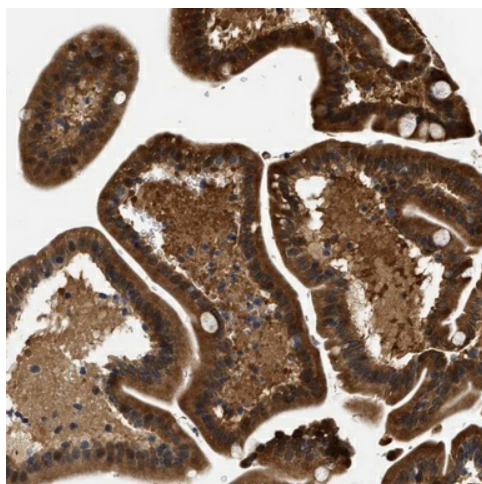
[View online »](#)

Product images:


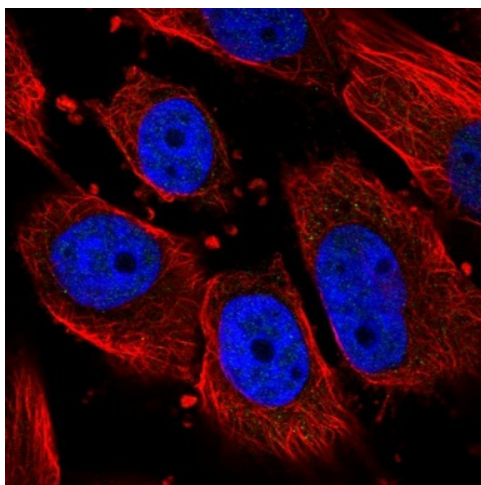
HEK293T cells were transfected with the pCMV6-ENTRY control (Cat# [PS100001], Left lane) or pCMV6-ENTRY TNIP2 (Cat# [RC201339], Right lane) cDNA for 48 hrs and lysed. Equivalent amounts of cell lysates (5 ug per lane) were separated by SDS-PAGE and immunoblotted with anti-TNIP2(Cat# TA590455). Positive lysates [LY411328] (100ug) and [LC411328] (20ug) can be purchased separately from OriGene.



ELISA: TNIP2 Antibody



Immunohistochemical staining of human duodenum shows strong cytoplasmic positivity in glandular cells. This validation was performed by Protein Atlas and the presentation of data is for informational purposes only.



Immunofluorescent staining of human cell line U-251 MG shows no positivity. This validation was performed by Protein Atlas and the presentation of data is for informational purposes only.