

Product datasheet for **TA590445**

RAB11FIP1 Rabbit Polyclonal Antibody

Product data:

| | |
|------------------------------|---|
| Product Type: | Primary Antibodies |
| Applications: | WB |
| Recommended Dilution: | WB 1:5000~20000, ELISA 1:100-1:2000 |
| Reactivity: | Human |
| Host: | Rabbit |
| Isotype: | IgG |
| Clonality: | Polyclonal |
| Immunogen: | DNA immunization. This antibody was made against a protein fragment from the N Terminus Region |
| Formulation: | 20 mM Potassium Phosphate, 150 mM Sodium Chloride, pH 7.0 |
| Concentration: | 1.05mg/ml |
| Purification: | Purified from mouse ascites fluids or tissue culture supernatant by affinity chromatography (protein A/G) |
| Conjugation: | Unconjugated |
| Storage: | Store at -20°C as received. |
| Stability: | Stable for 12 months from date of receipt. |
| Gene Name: | RAB11 family interacting protein 1 |
| Database Link: | NP_079427 Entrez Gene 80223 Human Q6WKZ4 |
| Background: | Proteins of the large Rab GTPase family (see RAB1A; MIM 179508) have regulatory roles in the formation, targeting, and fusion of intracellular transport vesicles. RAB11FIP1 is one of many proteins that interact with and regulate Rab GTPases (Hales et al., 2001 [PubMed 11495908]). [supplied by OMIM] |
| Synonyms: | NOEL1A; rab11-FIP1; RCP |
| Note: | This antibody was generated by SDIX's Genomic Antibody Technology® (GAT). Learn about GAT |

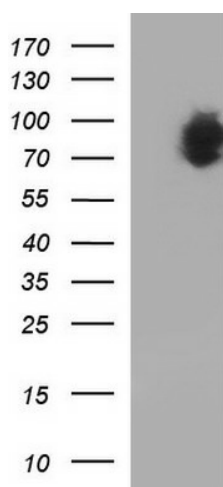


[View online »](#)

Protein Families: Druggable Genome

Protein Pathways: Endocytosis

Product images:



HEK293T cells were transfected with the pCMV6-ENTRY control (Cat# [PS100001], Left lane) or pCMV6-ENTRY RAB11FIP1 (Cat# [RC209640], Right lane) cDNA for 48 hrs and lysed. Equivalent amounts of cell lysates (5 ug per lane) were separated by SDS-PAGE and immunoblotted with anti-RA(Cat# TA590445). Positive lysates [LY410868] (100ug) and [LC410868] (20ug) can be purchased separately from OriGene.