

Product datasheet for **TA590436**

MAML2 Rabbit Polyclonal Antibody

Product data:

Product Type:	Primary Antibodies
Applications:	ELISA, WB
Recommended Dilution:	WB 1:5000~20000,ELISA 1:100-1:2000
Reactivity:	Human
Host:	Rabbit
Isotype:	IgG
Clonality:	Polyclonal
Immunogen:	DNA immunization. This antibody is specific for the Middle Region of the target protein.
Formulation:	20 mM Potassium Phosphate, 150 mM Sodium Chloride, pH 7.0
Concentration:	1.2mg/ml
Purification:	Purified from mouse ascites fluids or tissue culture supernatant by affinity chromatography (protein A/G)
Conjugation:	Unconjugated
Storage:	Store at -20°C as received.
Stability:	Stable for 12 months from date of receipt.
Gene Name:	mastermind like transcriptional coactivator 2
Database Link:	NP_115803 Entrez Gene 84441 Human Q8IZL2
Background:	MAML2 is a NOTCH transcription factor coactivator.
Synonyms:	MAM-3; MAM2; MAM3; MLL-MAML2
Note:	This antibody was generated by SDIX's Genomic Antibody Technology® (GAT). Learn about GAT
Protein Families:	Druggable Genome, Transcription Factors
Protein Pathways:	Notch signaling pathway

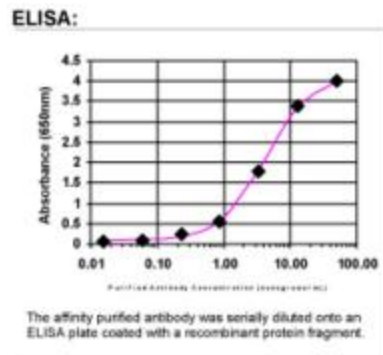


[View online »](#)

Product images:



Western Blot: MAML2 Antibody - Western Blot was performed using affinity purified SEQer MAML2 antibody, aa (705-804) antibody. The lanes contain 5-30ug of a whole cell extract. Final concentration of antibodies = 0.1ug/ml (1:10,000 dilution). The blot was probed overnight with the SEQer MAML2 antibody, aa (705-804) antibody. Blot was then washed according to protocol and probed with goat-anti-Rabbit-HRP conjugate at 1:5000 dilution, washed and developed using chemiluminescence (film exposure 5-30sec). The protein was detected as represented by the band shown.



ELISA: MAML2 Antibody