

## Product datasheet for **TA590435**

### MRPL41 Rabbit Polyclonal Antibody

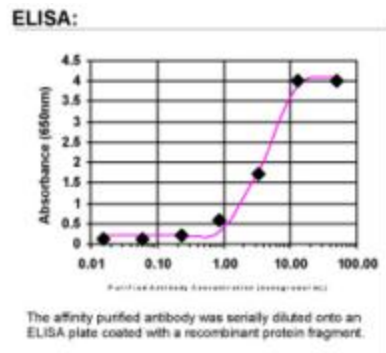
#### Product data:

Product Type:	Primary Antibodies
Applications:	ELISA
Recommended Dilution:	WB: 1:5000-1:20000; ELISA: 1:100-1:2000
Reactivity:	Human
Host:	Rabbit
Isotype:	IgG
Clonality:	Polyclonal
Immunogen:	DNA immunization. This antibody is specific for the entire range of the target protein.
Formulation:	20 mM Potassium Phosphate, 150 mM Sodium Chloride, pH 7.0
Concentration:	0.70657 mg/ml
Purification:	Purified from mouse ascites fluids or tissue culture supernatant by affinity chromatography (protein A/G)
Conjugation:	Unconjugated
Storage:	Store at -20°C as received.
Stability:	Stable for 12 months from date of receipt.
Gene Name:	mitochondrial ribosomal protein L41
Database Link:	<a href="#">NP_115866</a> <a href="#">Entrez Gene 64975 Human</a> <a href="#">Q8IXM3</a>
Background:	MRPL41 is a component of the mitochondrial ribosome large subunit. Also involved in apoptosis and cell cycle. Enhances TP53/p53 stability, thereby contributing to TP53/p53-induced apoptosis in response to growth-inhibitory condition. MRPL41 also enhances TP53/p53 translocation to the mitochondria. Has the ability to arrest the cell cycle at the G1 phase, possibly by stabilizing the CDKN1A and CDKN1B (p27Kip1) proteins.
Synonyms:	BMRP; MRP-L27; MRPL27; PIG3; RPML27
Note:	This antibody was generated by SDIX's Genomic Antibody Technology® (GAT). <a href="#">Learn about GAT</a>



[View online »](#)

## Product images:



ELISA: MRPL41 Antibody