

Product datasheet for **TA590432**

JMJD1C Rabbit Polyclonal Antibody

Product data:

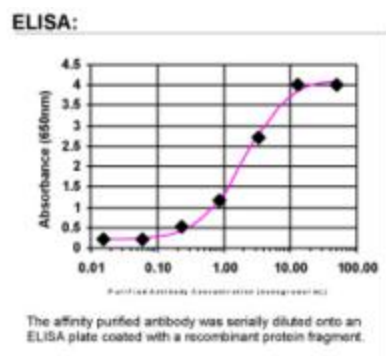
Product Type:	Primary Antibodies
Applications:	ELISA
Recommended Dilution:	ELISA: 1:100-1:2000
Reactivity:	Human
Host:	Rabbit
Isotype:	IgG
Clonality:	Polyclonal
Immunogen:	DNA immunization. This antibody is specific for the N Terminus Region of the target protein.
Formulation:	20 mM Potassium Phosphate, 150 mM Sodium Chloride, pH 7.0
Concentration:	1.16934 mg/ml
Purification:	Purified from mouse ascites fluids or tissue culture supernatant by affinity chromatography (protein A/G)
Conjugation:	Unconjugated
Storage:	Store at -20°C as received.
Stability:	Stable for 12 months from date of receipt.
Gene Name:	jumonji domain containing 1C
Database Link:	NP_116165 Entrez Gene 221037 Human Q15652
Background:	JMJD1C is a member of the jumonji (jnj) domain containing gene family of histone demethylases that plays a role in chromatin regulation and influences transcriptional activation and suppression. Some recently characterized members of the jnj family include JARID1A/RBP2, JARID1C, JMJD1A, JMJD1B, JMJD1C, JMJD2A, JMJD2C and JMJD2D. JMJD1C has been identified as a nuclear-receptor coactivator and is a candidate gene for autism.
Synonyms:	TRIP8
Note:	This antibody was generated by SDIX's Genomic Antibody Technology® (GAT). Learn about GAT



[View online »](#)

Protein Families: Druggable Genome

Product images:



ELISA: JMJD1C Antibody