

## Product datasheet for **TA590430**

### PCDH15 Rabbit Polyclonal Antibody

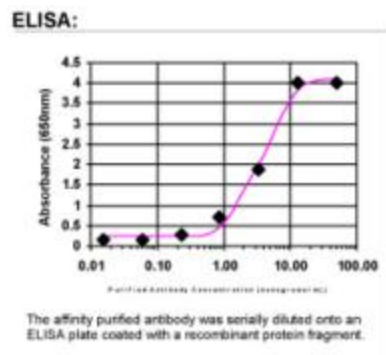
#### Product data:

Product Type:	Primary Antibodies
Applications:	ELISA
Recommended Dilution:	WB: 1:5000-1:20000; ELISA: 1:100-1:2000
Reactivity:	Human
Host:	Rabbit
Isotype:	IgG
Clonality:	Polyclonal
Immunogen:	DNA immunization. This antibody is specific for the C Terminus Region of the target protein.
Formulation:	20 mM Potassium Phosphate, 150 mM Sodium Chloride, pH 7.0
Concentration:	0.77591 mg/ml
Purification:	Purified from mouse ascites fluids or tissue culture supernatant by affinity chromatography (protein A/G)
Conjugation:	Unconjugated
Storage:	Store at -20°C as received.
Stability:	Stable for 12 months from date of receipt.
Gene Name:	protocadherin related 15
Database Link:	<a href="#">NP_149045</a> <a href="#">Entrez Gene 65217 Human</a> <a href="#">Q96QU1</a>
Background:	PCDH15 is a calcium-dependent cell-adhesion protein. PCDH15 is essential for maintenance of normal retinal and cochlear function.
Synonyms:	CDHR15; DFNB23; USH1F
Note:	This antibody was generated by SDIX's Genomic Antibody Technology® (GAT). <a href="#">Learn about GAT</a>
Protein Families:	Druggable Genome, Transmembrane



[View online »](#)

## Product images:



ELISA: PCDH15 Antibody