

## Product datasheet for **TA590429**

### PCDH15 Rabbit Polyclonal Antibody

#### Product data:

Product Type:	Primary Antibodies
Applications:	ELISA, WB
Recommended Dilution:	WB: 1:5000-1:20000; ELISA: 1:100-1:2000
Reactivity:	Human
Host:	Rabbit
Isotype:	IgG
Clonality:	Polyclonal
Immunogen:	DNA immunization. This antibody is specific for the N Terminus Region of the target protein (NM_023115).
Formulation:	20 mM Potassium Phosphate, 150 mM Sodium Chloride, pH 7.0
Concentration:	1.03mg/ml
Purification:	Purified from mouse ascites fluids or tissue culture supernatant by affinity chromatography (protein A/G)
Conjugation:	Unconjugated
Storage:	Store at -20°C as received.
Stability:	Stable for 12 months from date of receipt.
Predicted Protein Size:	216 kDa
Gene Name:	protocadherin related 15
Database Link:	<a href="#">NP_149045</a> <a href="#">Entrez Gene 65217 Human</a> <a href="#">Q96QU1</a>
Background:	PCDH15 is a calcium-dependent cell-adhesion protein. PCDH15 is essential for maintenance of normal retinal and cochlear function.
Synonyms:	CDHR15; DFNB23; USH1F
Note:	This antibody was generated by SDIX's Genomic Antibody Technology® (GAT). <a href="#">Learn about GAT</a>
Protein Families:	Druggable Genome, Transmembrane



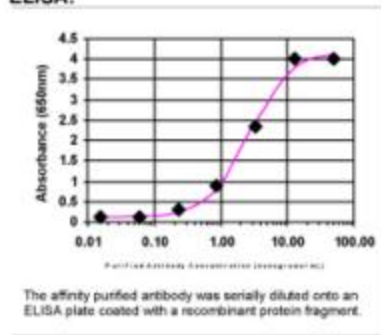
[View online »](#)

**Product images:**



Western Blot: PCDH15 Antibody - Western Blot was performed using affinity purified SEQer PCDH15 antibody, aa (108-207) antibody. The lanes contain 5-30ug of a whole cell extract. Final concentration of antibodies = 0.1ug/ml (1:10,000 dilution). The blot was probed overnight with the SEQer PCDH15 antibody, aa (108-207) antibody. Blot was then washed according to protocol and probed with goat-anti-Rabbit-HRP conjugate at 1:5000 dilution, washed and developed using chemiluminescence (film exposure 5-30sec). The protein was detected as represented by the band shown.

**ELISA:**



ELISA: PCDH15 Antibody