

Product datasheet for **TA590425**

DCLK3 Rabbit Polyclonal Antibody

Product data:

Product Type:	Primary Antibodies
Applications:	ELISA, IHC, WB
Recommended Dilution:	WB: 1:5000-1:20000; ELISA: 1:100-1:2000; IHC: 1:10-1:2000; IHC-P 1:10-1:2000
Reactivity:	Human
Host:	Rabbit
Isotype:	IgG
Clonality:	Polyclonal
Immunogen:	DNA immunization. This antibody is specific for the N Terminus Region of the target protein.
Formulation:	20 mM Potassium Phosphate, 150 mM Sodium Chloride, pH 7.0
Concentration:	1.2mg/ml
Purification:	Purified from mouse ascites fluids or tissue culture supernatant by affinity chromatography (protein A/G)
Conjugation:	Unconjugated
Storage:	Store at -20°C as received.
Stability:	Stable for 12 months from date of receipt.
Gene Name:	doublecortin like kinase 3
Database Link:	NP_208382 Entrez Gene 85443 Human Q9C098
Synonyms:	CLR; DCAMKL3; DCDC3C; DCK3
Note:	This antibody was generated by SDIX's Genomic Antibody Technology® (GAT). Learn about GAT
Protein Families:	Druggable Genome, Protein Kinase

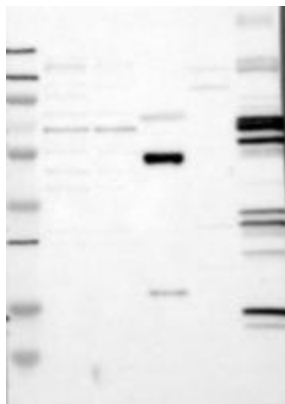


[View online »](#)

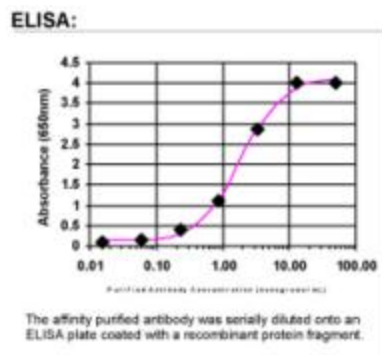
Product images:



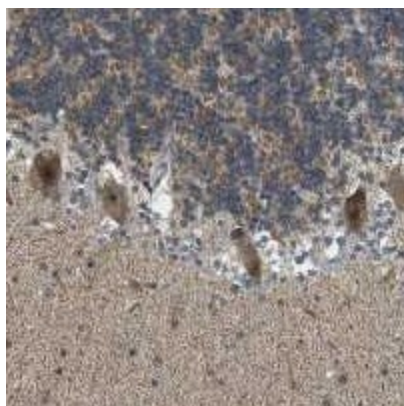
Western Blot: DCLK3 Antibody - Western Blot was performed using affinity purified SEQer DCAMKL3 antibody, aa (138-237) antibody. The lanes contain 5-30ug of a whole cell extract. Final concentration of antibodies = 0.1ug/ml (1:10,000 dilution). The blot was probed overnight with the SEQer DCAMKL3 antibody, aa (138-237) antibody. Blot was then washed according to protocol and probed with goat-anti-Rabbit-HRP conjugate at 1:5000 dilution, washed and developed using chemiluminescence (film exposure 5-30sec). The protein was detected as represented by the band shown.



Western Blot: DCLK3 Antibody - Samples: Lane 1, Marker: 250, 130, 95, 72, 55, 36, 28, 17, 11 Lane 2, RT-4 Lane 3, U-251MG sp Lane 4, Human Plasma Lane 5, Liver Lane 6, Tonsil, Target weight: 74 Validation score: 2 Validation description: Supportive - Band of predicted size in kDa (+/- 20%) with additional bands present.



ELISA: DCLK3 Antibody



Immunohistochemical staining of human cerebellum shows cytoplasmic and nuclear positivity in Purkinje cells. Antibody dilution: 1:400. Image and statement courtesy of the Human Protein Atlas (HPA).