

Product datasheet for **TA590423**

FCP1 (CTDP1) Rabbit Polyclonal Antibody

Product data:

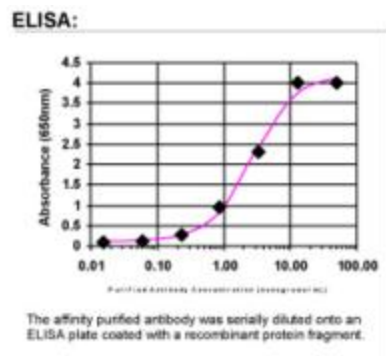
Product Type:	Primary Antibodies
Applications:	ELISA
Recommended Dilution:	WB: 1:5000-1:20000; ELISA: 1:100-1:2000
Reactivity:	Human
Host:	Rabbit
Isotype:	IgG
Clonality:	Polyclonal
Immunogen:	DNA immunization. This antibody is specific for the Middle Region of the target protein.
Formulation:	20 mM Potassium Phosphate, 150 mM Sodium Chloride, pH 7.0
Concentration:	0.8mg/ml
Purification:	Purified from mouse ascites fluids or tissue culture supernatant by affinity chromatography (protein A/G)
Conjugation:	Unconjugated
Storage:	Store at -20°C as received.
Stability:	Stable for 12 months from date of receipt.
Gene Name:	CTD phosphatase subunit 1
Database Link:	NP_430255 Entrez Gene 9150 Human Q9Y5B0
Background:	This gene encodes a protein which interacts with the carboxy-terminus of transcription initiation factor TFIIIF, a transcription factor which regulates elongation as well as initiation by RNA polymerase II. The protein may also represent a component of an RNA polymerase II holoenzyme complex. Alternative splicing of this gene results in two transcript variants encoding 2 different isoforms.
Synonyms:	CCFDN; FCP1
Note:	This antibody was generated by SDIX's Genomic Antibody Technology® (GAT). Learn about GAT



[View online »](#)

Protein Families: Druggable Genome, Phosphatase, Transcription Factors

Product images:



ELISA: FCP1 Antibody