

## Product datasheet for **TA590417**

### **p18 INK4c (CDKN2C) Rabbit Polyclonal Antibody**

#### **Product data:**

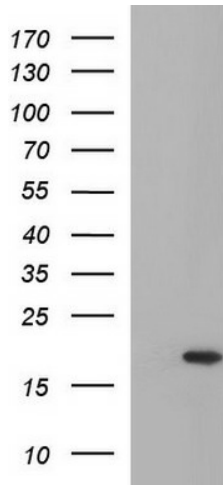
<b>Product Type:</b>	Primary Antibodies
<b>Applications:</b>	ELISA, IHC, WB
<b>Recommended Dilution:</b>	WB 1:5000~20000, IHC 1:150,ELISA 1:100-1:2000
<b>Reactivity:</b>	Human, Dog, Mouse
<b>Host:</b>	Rabbit
<b>Isotype:</b>	IgG
<b>Clonality:</b>	Polyclonal
<b>Immunogen:</b>	DNA immunization. This antibody is specific for the C Terminus Region of the target protein.
<b>Formulation:</b>	20 mM Potassium Phosphate, 150 mM Sodium Chloride, pH 7.0
<b>Concentration:</b>	1.0219 mg/ml
<b>Purification:</b>	Purified from mouse ascites fluids or tissue culture supernatant by affinity chromatography (protein A/G)
<b>Conjugation:</b>	Unconjugated
<b>Storage:</b>	Store at -20°C as received.
<b>Stability:</b>	Stable for 12 months from date of receipt.
<b>Gene Name:</b>	cyclin dependent kinase inhibitor 2C
<b>Database Link:</b>	<a href="#">NP_523240</a> <a href="#">Entrez Gene 12580 Mouse</a> <a href="#">Entrez Gene 475359 Dog</a> <a href="#">Entrez Gene 1031 Human</a> <a href="#">P42773</a>
<b>Background:</b>	p18 INK4c is a specific inhibitor of cdk4 / cdk6 (it interacts strongly with CDK6 and weakly with CDK4), and is expressed during G1 to S transition in the eukaryotic cell division cycle. It is maximally induced as cells enter S phase. Highest expression levels are found in skeletal muscle, but it is also found in the pancreas and heart.
<b>Synonyms:</b>	INK4C; p18; p18-INK4C
<b>Note:</b>	This antibody was generated by SDIX's Genomic Antibody Technology® (GAT). <a href="#">Learn about GAT</a>
<b>Protein Families:</b>	Druggable Genome



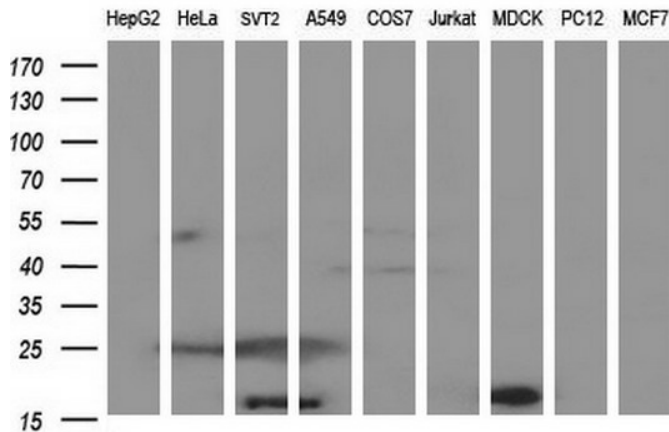
[View online »](#)

Protein Pathways: Cell cycle

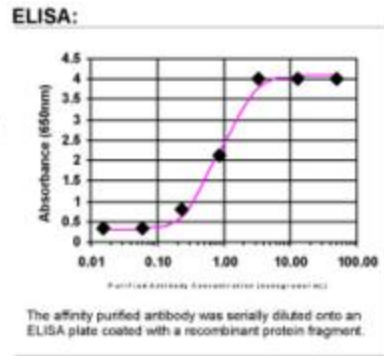
**Product images:**



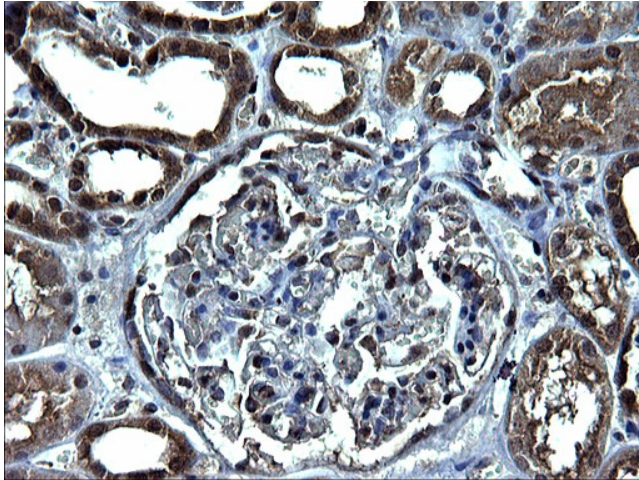
HEK293T cells were transfected with the pCMV6-ENTRY control (Cat# [PS100001], Left lane) or pCMV6-ENTRY CDKN2C (Cat# [RC214412], Right lane) cDNA for 48 hrs and lysed. Equivalent amounts of cell lysates (5 ug per lane) were separated by SDS-PAGE and immunoblotted with anti-CDKN2(Cat# TA590417). Positive lysates [LY429933] (100ug) and [LC429933] (20ug) can be purchased separately from OriGene.



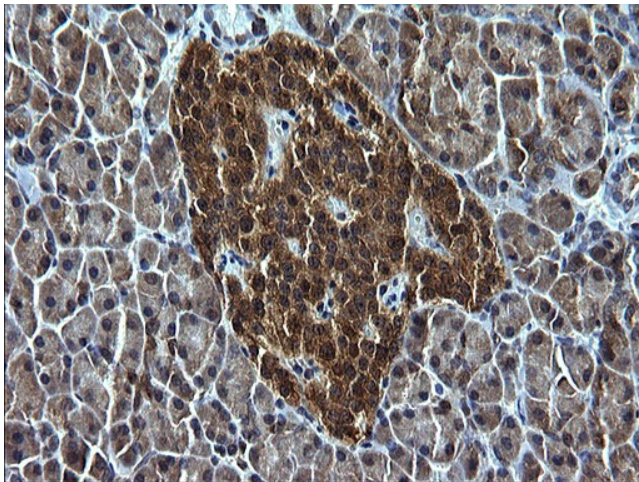
Western blot analysis of extracts (35ug) from 9 different cell lines by using anti-CDKN2C polyclonal antibody (HepG2: human; HeLa: human; SVT2: mouse; A549: human; COS7: monkey; Jurkat: human; MDCK: canine; PC12: rat; MCF7: human).



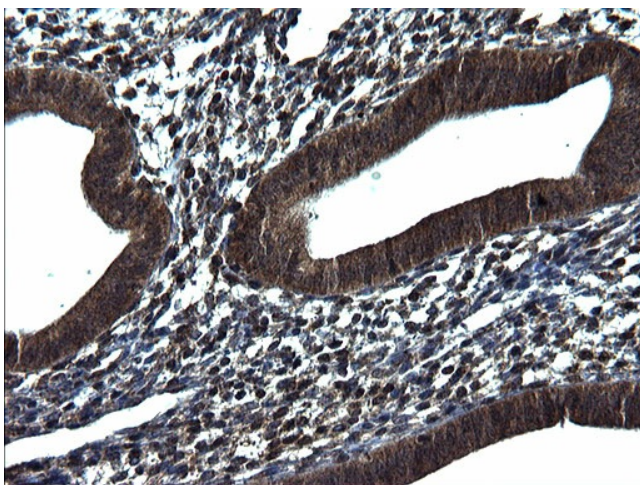
ELISA: p18 INK4c Antibody



Immunohistochemical staining of paraffin-embedded Human Kidney tissue using anti-CDKN2C rabbit polyclonal antibody. (TA590417)



Immunohistochemical staining of paraffin-embedded Human pancreas tissue using anti-CDKN2C rabbit polyclonal antibody. (TA590417)



Immunohistochemical staining of paraffin-embedded Human endometrium tissue using anti-CDKN2C rabbit polyclonal antibody. (TA590417)