

Product datasheet for **TA590410**

CTIP1 (BCL11A) Rabbit Polyclonal Antibody

Product data:

Product Type:	Primary Antibodies
Applications:	ELISA
Recommended Dilution:	ELISA: 1:100-1:2000; IHC: 1:10-1:2000; IHC-P 1:10-1:2000
Reactivity:	Human
Host:	Rabbit
Isotype:	IgG
Clonality:	Polyclonal
Immunogen:	DNA immunization. This antibody is specific for the N Terminus Region of the target protein.
Formulation:	20 mM Potassium Phosphate, 150 mM Sodium Chloride, pH 7.0
Concentration:	1 mg/ml
Purification:	Purified from mouse ascites fluids or tissue culture supernatant by affinity chromatography (protein A/G)
Conjugation:	Unconjugated
Storage:	Store at -20°C as received.
Stability:	Stable for 12 months from date of receipt.
Gene Name:	BAF chromatin remodeling complex subunit BCL11A
Database Link:	NP_612569 Entrez Gene 53335 Human Q9H165
Background:	This gene encodes a C2H2 type zinc-finger protein by its similarity to the mouse Bcl11a/Evi9 protein. The corresponding mouse gene is a common site of retroviral integration in myeloid leukemia, and may function as a leukemia disease gene, in part, through its interaction with BCL6. During hematopoietic cell differentiation, this gene is down-regulated. It is possibly involved in lymphoma pathogenesis since translocations associated with B-cell malignancies also deregulates its expression. Multiple transcript variants encoding several different isoforms have been found for this gene.
Synonyms:	BCL11A-L; BCL11a-M; BCL11A-S; BCL11A-XL; CTIP1; DILOS; EVI9; HBFQTL5; ZNF856

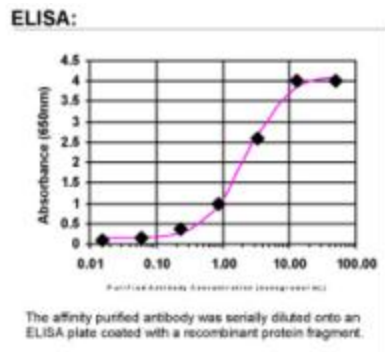


[View online »](#)

Note: This antibody was generated by SDIX's Genomic Antibody Technology® (GAT). [Learn about GAT](#)

Protein Families: Transcription Factors

Product images:



ELISA: Ctip1 Antibody